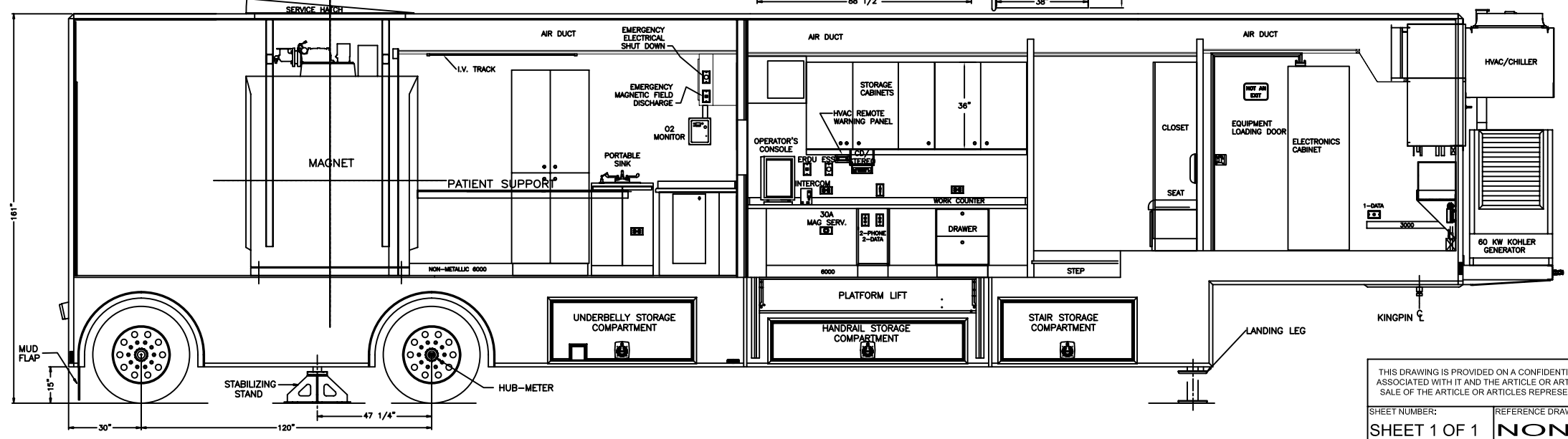
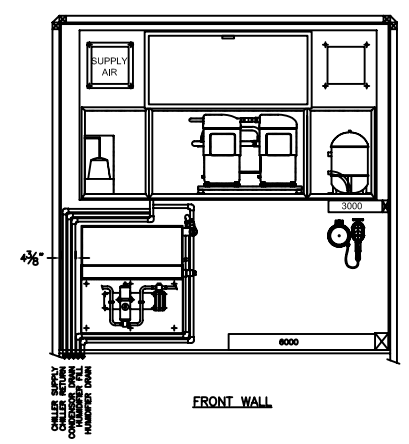
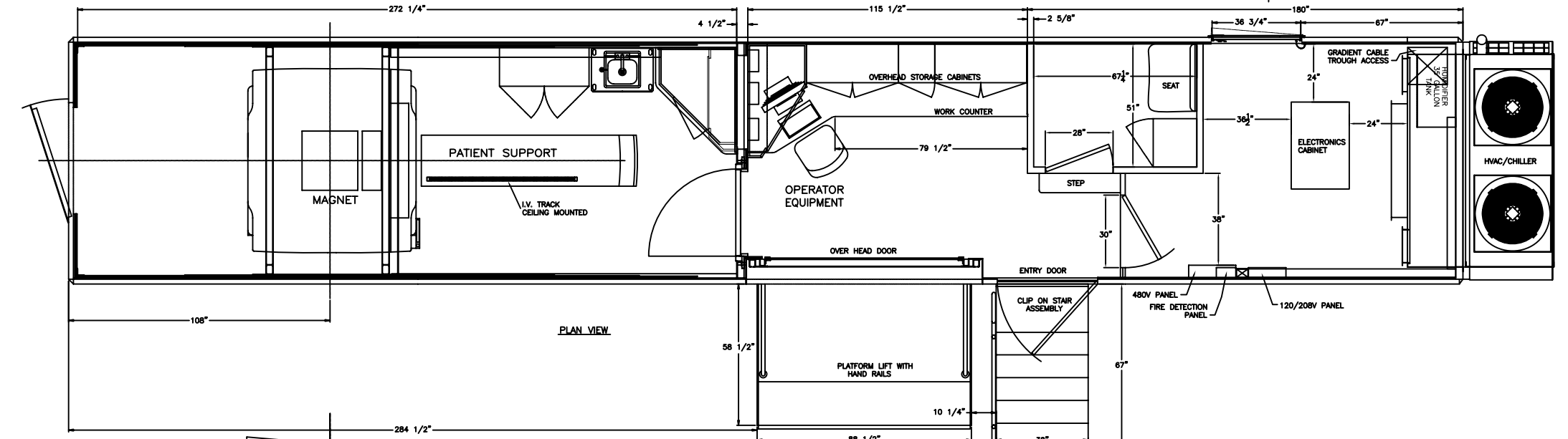
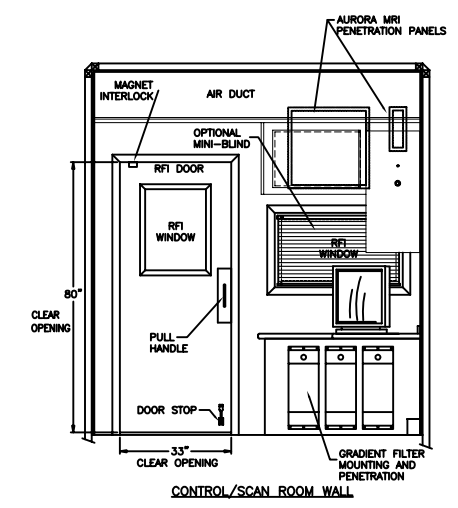
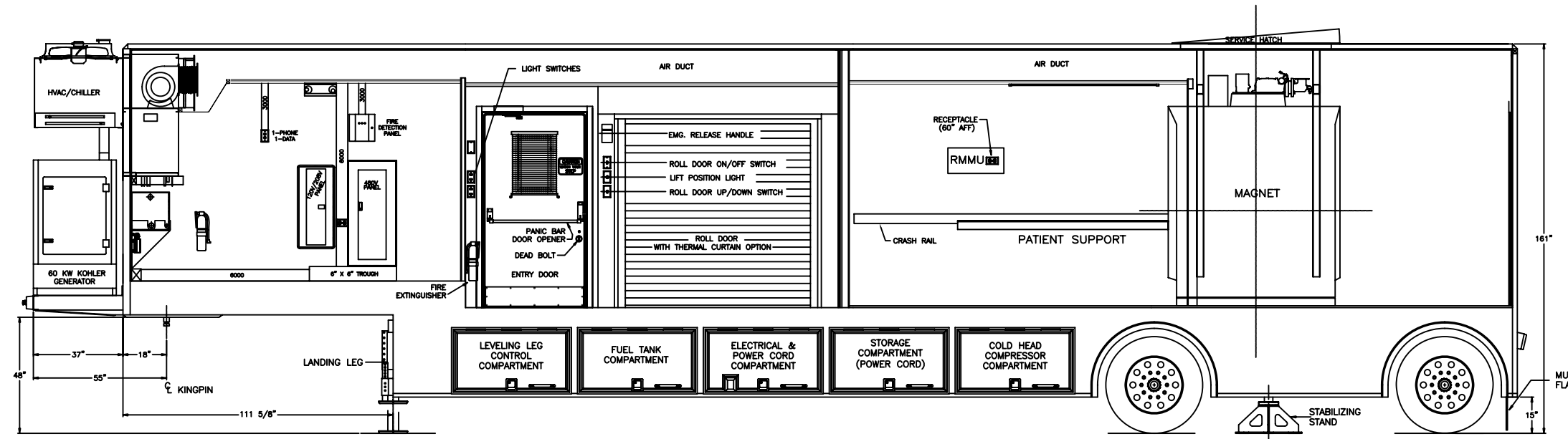


REVISIONS					DESCRIPTION
REV.	REV. DATE	CHK. BY	CHK. DATE	ENG.	
04	03/10/08	D. BEEZHOLD	03/14/08	D. FANCHER	CHANGED CABINET LAYOUT, MOVED EQUIPMENT LOADING DOOR FORWARD



THIS DRAWING IS PROVIDED ON A CONFIDENTIAL BASIS SUBJECT TO RETURN ON DEMAND OF OSHKOSH SPECIALTY VEHICLES ("OSHKOSH"), WHICH RETAINS ANY AND ALL RIGHTS ASSOCIATED WITH IT AND THE ARTICLE OR ARTICLES IT REPRESENTS, DISCLOSURE, REPRODUCTION OR ALTERATION OF ANY PART OF THIS DRAWING OR MANUFACTURE, USE OR SALE OF THE ARTICLE OR ARTICLES REPRESENTED, IS PROHIBITED WITHOUT THE PRIOR WRITTEN AUTHORIZATION OF OSHKOSH, © OSHKOSH SPECIALTY VEHICLES (unpublished).

SHEET NUMBER: SHEET 1 OF 1	REFERENCE DRAWING: NONE	TITLE: GENERAL LAYOUT AURORA MRI SYSTEM 8'-6" x 13'-6" x 48'-0" TRAILER	DATE: 08/31/06	SCALE: NTS
JOB#	OSHKOSH SPECIALTY VEHICLES	16745 S. LATHROP AVENUE HARVEY, IL. 60426 PHONE: (708) 596-5066 FAX: (708) 596-2480	CHECKED BY: D. FANCHER	DRAWING NUMBER: 12194-A01