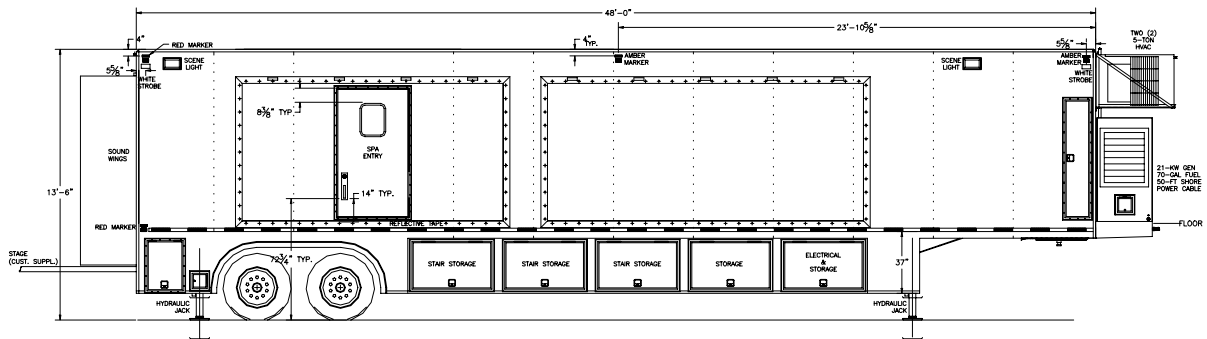




Operator and Service Manual

GE MOVING EXPERIENCES Wellness Unit 48' L x 8'-6" W x 13'-6" H USA Unit



© 2007 Oshkosh Specialty Vehicles, All Rights Reserved.

This manual contains confidential information of Oshkosh Specialty Vehicles. You may not copy it or any part of it without the written permission of Oshkosh Specialty Vehicles. This manual may be used only by you and only for the purposes for which it was intended. You may not disclose this manual or the confidential information it contains outside of your company. If you wish to copy part of this manual or to use it other than as it has been described above, you must contact Oshkosh Specialty Vehicles seeking permission to do so.

North America

Corporate Headquarters
Oshkosh Specialty Vehicles
16745 South Lathrop Ave.
Harvey, Illinois
60426
USA
(001) 708.596.5066

Europe

Oshkosh Specialty Vehicles, Ltd.
Unit 17, Nelson Way
Tuscum Trading Estate,
Camberley, Surrey
GU15 3DH
United Kingdom
(44) 01276.64490

Buys Ballotstraat 6
3261 LA Oud-Beijerland, Holland
+31 (0) 186-614322
Fax +31 (0) 186-619367
E-mail: smit@smit-mobile.nl



List of Revisions & Warnings

Revisions

00	New Release	September 2003
01	Updated Logo & Company Reference	February 2007

Notice

In accordance with our policy of product development, and in compliance with the GEMS VCR program, Oshkosh Specialty Vehicles reserves the right to make changes in the equipment, design, specifications, and materials of the product described herein. If there are any inconsistencies between this manual and the mobile unit that inhibit serviceability, please contact Oshkosh Specialty Vehicles for assistance.

This manual is one of two (2) information documents provided in the mobile unit. The documentation package consists of:

1. Volume I – Site Guide, Operators Manual, and associated drawings
2. Volume II – Vendor Information

These volumes should be kept in the mobile unit at all times.

Any problems or questions related to the components or systems covered in this manual may be directed to:

Oshkosh Specialty Vehicles
16745 South Lathrop Avenue
Harvey, Illinois
60426
USA

(001) 800.839.0630 (24 hour service)
(001) 708.596.2480 (fax)

<http://www.oshkoshsv.com/>

Warnings & Safety Alert Conventions

The following terms define the various precautions and notices used in this manual:

NOTE:

Whenever information exists that requires additional emphasis beyond the standard textual information, the term “NOTE” is used.

IMPORTANT

Whenever information exists that requires special attention to procedures to ensure proper operation of the equipment or to prevent its possible failure, the term “IMPORTANT” is used.



Whenever potential damage to equipment exists, requiring correct procedures / practices for prevention, the term “CAUTION” is used.



Whenever potential personal injury or death situations exist, requiring correct procedures / practices for prevention, the term “WARNING” is used.



Whenever immediate hazards exist that could result in personal injury or death that cannot be eliminated by design safeguards, the term “DANGER” is used.



This safety alert symbol indicates important safety messages in the manual. When you see this symbol, carefully read the message that follows and be alert to the possibility of personal injury or death.



Electrical, mechanical, pneumatic, and hydraulic safety devices have been installed on this vehicle to help protect against personal injury and / or damage to equipment. Under no circumstances should any attempt be made to disconnect or in any way render any of these devices inoperative. If a malfunction of any safety device is discovered to exist, **DO NOT** operate the vehicle, but immediately notify appropriate maintenance personnel.

Oshkosh Specialty vehicles shall have no liability with respect to: REPAIRS IMPROPERLY PERFORMED OR REPLACEMENTS IMPROPERLY INSTALLED (or) USE OF REPLACEMENT PARTS OR ACCESSORIES NOT CONFORMING TO Oshkosh SPECIALTY VEHICLE’S SPECIFICATIONS, WHICH ADVERSELY AFFECT PERFORMANCE OR DURABILITY (or) ALTERATIONS OR MODIFICATIONS NOT RECOMMENDED OR APPROVED IN WRITING BY Oshkosh SPECIALTY VEHICLES (or) FOR EQUIPMENT DAMAGE OR PERSONAL INJURY OR DEATH AS A RESULT OF RENDERING ANY SAFETY DEVICE INOPERABLE.

Certain inherent risks are associated with heavy trailers due to the nature of their use. Personnel working in the area of these trailers are subject to certain hazards that cannot be met by mechanical means but only by the exercise of intelligence, care, and common sense. It is therefore essential for the owner of this equipment to have personnel involved in the use and operation of these trailers who are competent, careful, physically and mentally qualified, and trained in the safe operation of this equipment.

Table of Contents

List of Revisions & Warnings	3
Revisions	3
Notice	3
Warnings & Safety Alert Conventions	4
Section 1: Introduction	11
Section 2: Safety Guidelines	13
2.1 Operator's General Safety Precautions	14
2.2 Electrical Safety	15
2.3 Transportation Safety	15
Section 3: Mobile Unit Overview	17
3.1 Exhibition Kitchen Overall	17
3.2 Kitchen Seating Area Overall	18
3.3 Yoga Exercise Room Overall	18
3.4 Wellness Spa Overall	19
3.5 Air Ride Control Valves	20
3.6 Canopies	21
3.7 Exterior Overall	22
3.8 Fuel Compartment	23
3.9 Glad-hand Connections	24
3.10 Levels, Digital	24
3.11 Mobile Unit Controls	25
3.12 Phone & Data Line Connections	25
3.13 Rear Stabilizing Legs	26
3.15 Stair Assembly	27
3.16 Water Tank Fill	27
Section 4: Safety Systems	29
4.1 Emergency Lighting	29
4.2 Fire Suppression (manual)	30
4.3 Fire Detection System	30
System Operation	31
Pull Station	32
Power Backup System	32
4.4 Marker Lights	32
4.5 Warning Lights	32
Section 5: Mobile Unit Setup Procedure	33
5.1 Park the Mobile Unit	33
5.2 Lower the Front Stabilizing Legs	33
5.3 Disconnect the Tractor	33
5.4 Exhaust the air from the Air Suspension System	33
5.5 Lower the Rear Stabilizing Legs	34
5.6 Re-level the Mobile Unit	34
5.7 Disconnect the Tractor Air and Electrical Lines	34
5.8 Lower the Auxiliary Support Legs	34
5.9 Connect to Shore Power	35



- 5.10 Switch from Generator Power to Shore Power 35
- 5.11 Connect the Phone and Data Lines..... 37
- 5.12 Connect the Water Hose 37
- 5.13 Connect the Drain Hoses 37
- 5.14 Install the Stair Assembly (Exhibition Kitchen Entry)..... 37
 - Stair Assembly..... 37
- 5.15 Extend the Slide-outs 38
- 5.16 Install the remaining Stair Assemblies..... 38
- 5.17 Remove Restraining Hardware and Position Equipment for Use. 38
- 5.18 Door Canopy Deployment 39
- 5.19 Stage and Stage Canopy Deployment 39
- Section 6: Mobile Unit Transport Procedure..... 41**
- 6.1 Stage and Stage Canopy Removal..... 41
- 6.2 Door Canopy Removal..... 41
- 6.3 Secure all Equipment 41
- 6.4 Remove and Store the Stair Assemblies 42
 - Standard Stair System..... 42
- 6.5 Retract Slide-outs to Transport Position 43
- 6.6 Switch from Shore Power to Generator Power 44
- 6.7 Remove the Shore Power Connection..... 44
- 6.8 Disconnect Phone and Data Lines..... 44
- 6.9 Disconnect the Water Hose and Drain the Tanks..... 45
- 6.10 Remove and Store the Exhibition Kitchen Stair Assembly..... 45
- 6.11 Raise the Auxiliary Support Legs 45
- 6.12 Connect the Tractor Air and Electrical Lines 45
- 6.13 Raise the Rear Stabilizing Legs 46
- 6.14 Connect the Tractor to the Mobile Unit..... 46
- 6.15 Raise the Front Stabilizing Legs..... 46
- 6.16 Raise the Air Suspension System 47
- 6.17 Verify that the Mobile Unit is ready for Transport..... 47
- Section 7: Electrical System..... 49**
- 7.1 120/208 & 480V AC Electrical Panels..... 50
- 7.2 480V AC Phase Power Monitor 51
- 7.3 Facility Power Connection..... 52
- 7.4 Power Cable..... 53
- Section 8: Generator 55**
- 8.1 Generator Start/Stop Switch 56
- Section 9: HVAC System 57**
- 9.1 System Specifications and Descriptions 58
- 9.2 Exterior HVAC Specifications..... 58
- 9.3 Interior HVAC Specifications..... 59
- 9.4 Underbody Compartment Heater 59
- 9.5 Penn Control Temperature Setting 60
- Section 10: Wheel Chair Lift 61**
- Section 11: Intrusion Alarm (optional)..... 63**
- 11.1 Operation 63



Section 12: Stabilizing Legs	65
12.1 Rear Stabilizing Legs	66
12.2 Rear Air Suspension System Controls	66
Section 13: Lighting System.....	67
13.1 Emergency Lighting	67
13.2 Exterior Lighting	68
Underbody Compartment Lighting.....	68
Entrance Door Lighting / Exterior Service Lighting.....	69
Marker & Running Lights	69
13.3 Interior Lighting	70
Exhibition Kitchen	70
Kitchen Seating Area	71
13.4 Warning Lights	72
AC Power Indicator Light.....	72
Transport Warning Light	72
Suspension Transport Warning Light	73
Section 14: Slide-outs	75
14.1 Slide-out Controls	75
Extending the Slide-outs.....	75
Retracting the Slide-outs	76
Section 15: General Maintenance	79
15.1 Daily Maintenance	79
15.2 Weekly Maintenance.....	79
15.3 Monthly Maintenance.....	80
15.4 Quarterly Maintenance.....	81
Preventive Maintenance Checklist	82
Section 16: Specific Maintenance	85
16.1 Door Closer Adjustments	85
16.2 Electrical System	85
16.3 Generator System.....	86
16.4 HVAC System	86
16.5 Stabilizing Legs.....	86
Appendix A: Mobile Unit Checklist	87
Mobile Unit Setup Checklist	88
Mobile Unit Transport Checklist	89
Appendix B: Troubleshooting	91
AC Power Indicator Light is off... ..	91
Transport Warning Light is on.....	91
Suspension Transport Indicator Light is Illuminated.....	91
Temperature is out of specifications.....	92
Appendix C: HVAC Set Points.....	93
Temperature Controller Settings	93
Appendix D: Circuit Malfunction Checklist	95



Category 1.....	95
Category 2.....	95
<u>Appendix E: Lockout/Tagout Procedures</u>	97
Specific Energy Control Procedures.....	97
Machine or Equipment for this Procedure:.....	97
Control of Hazardous Energy:.....	97
Affected Personnel to notify when the Specialty Vehicles Trailer is to be Locked Out:.....	97
Shut down specifications for the Specialty Vehicle Trailers:.....	98
Methods to dissipate energy:.....	98
Method of Verifying the Isolation of the Machine or Equipment:.....	98
<u>Appendix F: Quarterly Maintenance Checklist</u>	99

List of Figures

Figure 1: The GE Moving Experiences Mobile Wellness Unit	11
Figure 2: Wellness Unit Exhibition Kitchen Overall.....	17
Figure 3: Kitchen Seating Area Overall.....	18
Figure 4: Yoga Exercise Room Overall.....	18
Figure 5: Wellness Spa Overall	19
Figure 6: Air Ride Control Valves.....	20
Figure 7: Door Canopy.....	21
Figure 8: Exterior Overall	22
Figure 9: Fuel Compartment	23
Figure 10: Glad Hand Connections.....	24
Figure 11: Digital Levels.....	24
Figure 12 Mobile Unit Controls	25
Figure 13: Phone & Data Line Connections	25
Figure 14: Rear Stabilizing Legs.....	26
Figure 15: Front Stabilizing Legs and Auxiliary Support Legs.....	26
Figure 16: Stair Assembly.....	27
Figure 17: Fresh Water Tank Fill	27
Figure 18: Emergency Lighting	29
Figure 19: Fire Extinguisher.....	30
Figure 20: Smoke Detector	30
Figure 21: Fire Alarm Control Panel	31
Figure 22: Fire Alarm Pull Station.....	32
Figure 23: Line/Off/Generator (LOG) Switch	36
Figure 24: Stage Assembly Layout.....	39
Figure 25: 480V and 120/208V AC Electrical Panels	50
Figure 26: 480V AC Phase Power Monitor.....	51
Figure 27: Shore Power Connection.....	52
Figure 28: Generator Compartment.....	56
Figure 29: A/C Units.....	57
Figure 30: Heater	59
Figure 31: Penn Temperature Control	60
Figure 32: Penn Temperature and Humidity Controls Location	60
Figure 33: Intrusion Alarm Keypad	63
Figure 34: Front Stabilizing Leg Assembly	65
Figure 35: Air Bag Controls.....	66
Figure 36: Emergency Lighting	67
Figure 37: Compartment Light	68
Figure 38: Entry Door Lighting	69
Figure 39: Interior Overall Lighting.....	70
Figure 40: Kitchen Seating Area Overall Lighting.....	71
Figure 41: Warning Lights.....	72
Figure 42: Slide-out Controls	77



Section 1: Introduction



This manual is intended to instruct and assist personnel already qualified in the proper installation of the mobile unit. This manual is not intended to enable persons unfamiliar with the mobile unit to perform the setup and transport procedures.

This manual contains the basic information needed to setup, transport, and service the mobile unit. This mobile unit was designed to operate within certain limitations and specifications. When performing the setup or transport procedures for the mobile unit, follow the proper logical steps that have been outlined in this manual. The drawings in this manual are representative of this product. In accordance with our program of continued product development, and in compliance with the GEMS VCR program, designs and specifications are subject to change without notice.

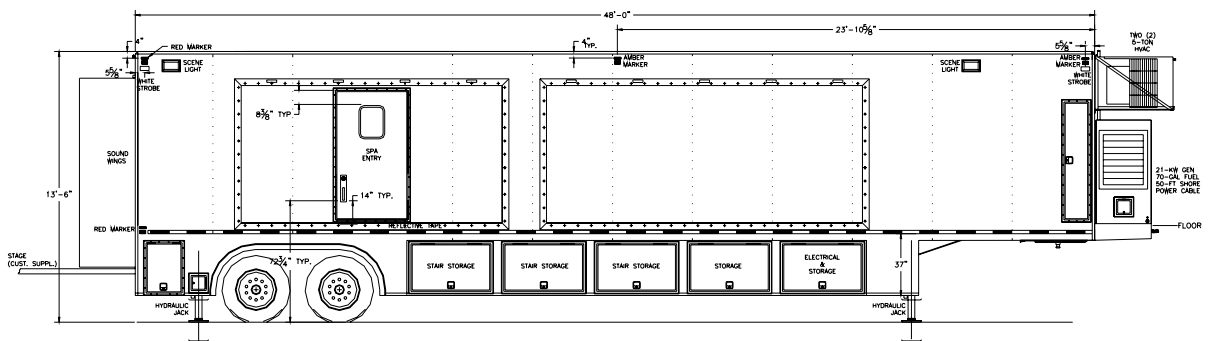


Figure 1: The GE Moving Experiences Mobile Wellness Unit



As part of Oshkosh Specialty Vehicles' on-going program to improve its products and service, (and their effectiveness in enhancing safety, reliability, performance, productivity, and the useful service life of the equipment) Oshkosh Specialty Vehicles reserves the right to implement product changes and disseminate changes in design and service information without notice or recourse.

For questions regarding the Operation or Service of this unit call Oshkosh Specialty Vehicles at 800-839-0630.

Section 2: Safety Guidelines



Electrical, mechanical, pneumatic, and hydraulic safety devices have been installed on this vehicle to help protect against personal injury and / or damage to equipment. Under no circumstances should any attempt be made to disconnect or in any way render any of these devices inoperative. If a malfunction of any safety device is discovered to exist, DO NOT operate the vehicle, but immediately notify appropriate maintenance personnel.



Use and follow the appropriate Lockout/Tagout procedures as required by OSHA Standard 1910.147 when performing maintenance or servicing any electrical, hydraulic or pneumatic systems. See Appendix E for Lockout/Tagout procedures.



It is the operator's responsibility to verify that the shore power receptacle is of the same type and voltage as the connection that is supplied by Oshkosh Specialty Vehicles. Failure to do this can result in injury or death to the operator of the mobile unit as well as irreparable damage to the mobile unit. Make sure that all electrical parts are serviced only by a certified electrician or qualified personnel. Dangerous voltages are present which could result in injury or death.



Always make sure that eyes are protected while servicing the unit. Wear safety goggles when prying, drilling, grinding, or working with batteries. Wear safety goggles over regular prescription glasses unless the lenses are made of hardened glass and can serve as safety goggles.



Be certain to disconnect the power before working on any of the electrical systems.



When servicing the unit be certain that a first aid kit and fire extinguisher are within reach at all times.

This safety section contains important information in regards to general safety guidelines that should be followed. Before attempting to service the mobile unit, read this safety section as well as all other safety sections found in applicable manufacturers' manuals in the component literature binder.



2.1 Operator's General Safety Precautions

Your safety and the safety of other persons in the area of this vehicle are the result of your correct operation of this vehicle. Know the location, positions, and functions of all the controls. Know the meaning of the various Warning, Caution, Strobe, and Annunciator lights and their associated audible warning sounds.

Read this manual completely and make sure you understand the contents. Make sure you understand, for example, the characteristics of speed, stability, brakes, and steering, etc. of this vehicle. If you have any questions, contact Oshkosh Specialty Vehicles, (800) 839-0630. Always keep a copy of this manual with the vehicle.

The safety information in the manual does not replace any other rules or laws for safety that are used in your area, Know the local rules or laws for safety. Make sure that your vehicle has the correct equipment to operate according to these rules or laws.

All safety hazards that can possibly arise cannot be foreseen and noted in this manual. You must always use common sense and apply the general as well as the specific safety precautions.

1. Make sure the work area is well ventilated.
2. Disconnect the electrical power to prevent the possibility of electrical shock when servicing all electrical equipment.
3. Follow all manufacturers' directions and request material data sheets where applicable.
4. Always keep tools clean and free of grease.
5. Do not stand on chairs inside of the mobile unit under any circumstances.
6. Follow all safety precautions found in the documentation package that is included with the mobile unit.



2.2 Electrical Safety



Use and follow the appropriate Lockout/Tagout procedures as required by OSHA Standard 1910.147 when performing maintenance or servicing any electrical, hydraulic or pneumatic systems. See Appendix E for Lockout/Tagout procedures.



Before connecting or disconnecting from shore power, it is imperative that the shore power connections be moved to the "OFF" position. Failure to do this can result in injury or death to the operator of the mobile unit.



It is the operator's responsibility to verify that the shore power receptacle is of the same type and voltage as the connection that is supplied by Oshkosh Specialty Vehicles. Failure to do this can result in injury or death to the operator of the mobile unit as well as irreparable damage to the mobile unit.



Always inspect the power cable, connectors, and fasteners prior to usage. If during inspection, it is suspected that either internal or external damage has occurred, have a certified electrician inspect and repair the damage before using.

When working with the electrical system for the mobile unit. Follow the warnings and cautions listed above.

2.3 Transportation Safety

1. Walk around the unit to make certain that all doors are closed and locked.
2. If any of the warning lights are illuminated, do not move the mobile unit.
3. Before moving the mobile unit, verify that all marker and running lights are working properly.
4. Consult with the local motor vehicle authority to determine if there are any travel restrictions or routes.



Section 3: Mobile Unit Overview

The components of the mobile unit have been divided into alphabetical order following a brief description of the Wellness Suites within the unit. With each component a picture and description will be found to better illustrate the components of the mobile unit. Additional components of the mobile unit can be found within the remaining chapters.

3.1 Exhibition Kitchen Overall

The Exhibition Kitchen contains GE Appliances that represent the typical kitchen components that can be found in most domestic kitchens. In this kitchen, meal preparation is demonstrated.



[Figure 2: Wellness Unit Exhibition Kitchen Overall](#)

3.2 Kitchen Seating Area Overall

The Kitchen Seating Area is provided to allow our guests to view the healthful meal preparation demonstrations and take part in the process.



Figure 3: Kitchen Seating Area Overall

3.3 Yoga Exercise Room Overall

The Yoga Exercise Room provides an area for our guests to take part in the Yoga Exercise demonstration aimed at improving health and wellness.



Figure 4: Yoga Exercise Room Overall

3.4 Wellness Spa Overall

The Wellness Spa is an area set aside to provide our guests with an invigorating massage.



Figure 5: Wellness Spa Overall

The Yoga Exercise Room and Wellness Spa can be combined to provide a large multipurpose room.

3.5 Air Ride Control Valves



The air ride control valves must be in the normal ride position before the mobile unit can be transported. If the air ride control valves are not in the normal ride position, irreparable damage may occur to the mobile unit.

The air ride control valves adjust the rear air suspension bags. When the mobile unit is being transported, the air ride control valves must be in the normal ride position.



Figure 6: Air Ride Control Valves

3.6 Canopies

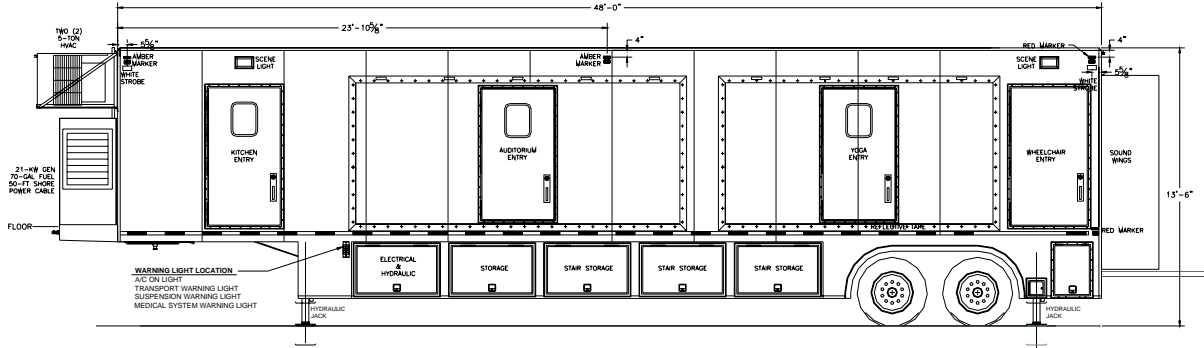
The canopies are positioned above the doors to provide shelter from the elements.



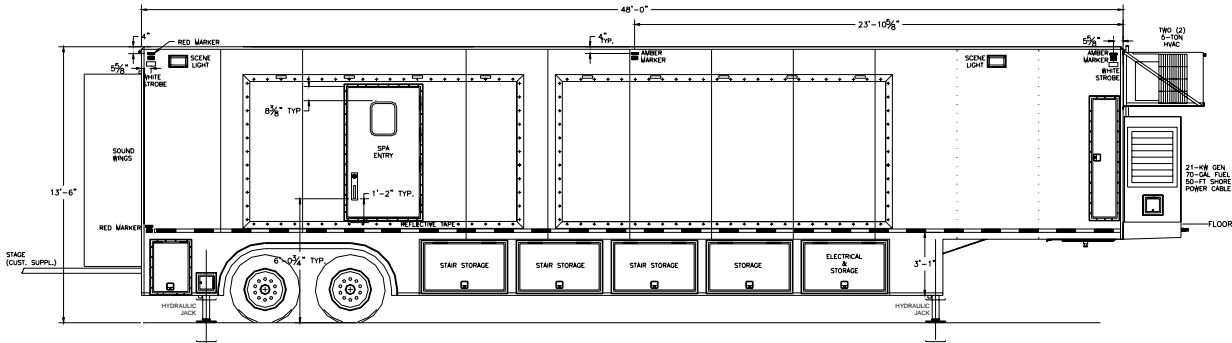
Figure 7: Door Canopy

3.7 Exterior Overall

In these illustrations the entry doors, and the generator housing can be seen.



Left Side



Right Side

Figure 8: Exterior Overall

3.8 Fuel Compartment

The fuel compartment, located in the lower section of the generator compartment, stores the fuel tank, fuel gauge, fuel pump, and fuel separator.

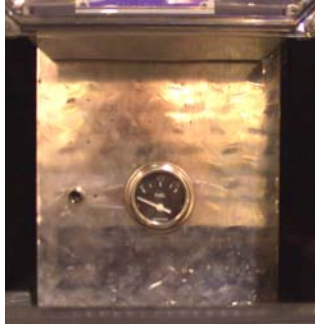


Figure 9: Fuel Compartment

Fuel Gauge:

The fuel gauge, located on the right side of the generator compartment, is push button activated and will give an accurate reading of the available fuel supply.

Fuel Pump (not shown):

The fuel pump pumps the fuel from the fuel tank to the generator.

Fuel Separator (not shown):

The fuel separator removes debris from the fuel supply.

Fuel Tank:

The fuel tank stores and supplies fuel to the generator. The capacity of the fuel tank is 70 US gallons. Only use diesel fuel.

3.9 Glad-hand Connections

The glad hands are the connection point between the tractor and the mobile unit. All connections must be made before moving the mobile unit. Failure to make all connections can result in damage to the mobile unit.



Figure 10: Glad Hand Connections

- Emergency Airline: Backup airline in the event that the main airline fails.
- Key Lock Box: A combination lock that holds a key to the mobile unit.
- Service Airline: The main airline for the mobile unit.
- Standard Electrical Service: The main electrical connection for the mobile unit.
- Generator Access: The generator housing comes with locking doors to prevent unauthorized access.

3.10 Levels, Digital

The digital levels allow the mobile unit to be leveled both front to back and side to side. It is imperative that the unit be leveled prior to use.



Figure 11: Digital Levels

3.11 Mobile Unit Controls

Located on the walls and panels inside of the mobile unit are the various controls that are used for operating such items as, the interior and exterior lights, emergency stop buttons, fire alarms, and emergency equipment.

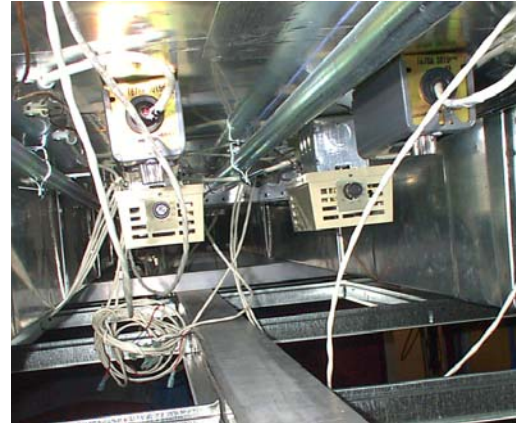


Figure 12 Mobile Unit Controls

Exterior and Interior Light
Switches:

ON / OFF light switch for the exterior lights.

Humidistat:

Humidity information of the mobile unit.

Penn Controls:

Temperature controls for the mobile unit.

3.12 Phone & Data Line Connections

The phone and data connections are located in the underbody compartments. The connections are used to connect the mobile unit to the shore facility. The telephone connections utilize a Hubbell all weather connection, while the data lines utilize an RJ-45 connection and CAT-5E cabling.



Figure 13: Phone & Data Line Connections

Phone Connections

The phone connection that is utilized is an RJ-45. The connection utilizes CAT-5E cable and can be connected directly to the facility.

Data Connections

The data connection that is utilized is an RJ-45. The connection utilizes CAT-5E cable and can be connected directly to the facility.

3.13 Rear Stabilizing Legs

The rear stabilizing stands are extended underneath the rear of the mobile unit when the medical system is in use. These legs help to level the mobile unit and decrease vibration caused by the medical system.



Figure 14: Rear Stabilizing Legs

3.14 Front Landing / Stabilizing Legs

The Front Landing / Stabilizing legs and auxiliary support legs can be found at front of the mobile unit. They are used in order to level the unit prior to use. Since the landing / stabilizing legs are hydraulically controlled, the manual auxiliary legs must also be used as a backup.



Figure 15: Front Stabilizing Legs and Auxiliary Support Legs

3.15 Stair Assembly

The stairs allow access to the interior of the mobile unit through the staff door.

The stairs attach directly to the mobile unit, as shown.



Figure 16: Stair Assembly

3.16 Water Tank Fill

The water tank fill connection is located on the right rear side of the unit. It accommodates a standard water hose connector. The water tank capacity is 52 gallons.



Figure 17: Fresh Water Tank Fill



Section 4: Safety Systems

This safety section contains important information about the safety systems that have been built into the mobile unit to protect all personnel and equipment. Before attempting to service the mobile unit, read this safety section as well as all other safety sections found in applicable manufacturers manuals in the component literature binder.

4.1 Emergency Lighting

In the event that the main AC power fails, three dual beam emergency lights are provided in the Exhibition Kitchen, Yoga Exercise Room and Wellness Spa. These lights will automatically illuminate when the main AC power is lost. The emergency lighting system is wired into a 120V AC electrical system that allows the lights internal circuitry to keep their batteries at 100% charge. The emergency lights will illuminate the exit doors last for approximately 90 minutes.



[Figure 18: Emergency Lighting](#)

4.2 Fire Suppression (manual)

Only one fire extinguisher is supplied with the mobile unit. Instructions for operation are clearly printed on the canister of the fire extinguisher. The fire extinguisher meets the following standards.



Figure 19: Fire Extinguisher

- It is a class A/B/C 1211 hand held unit.
- It has a charged weight of 2 lbs., 8 oz.
- It is U.L. listed.
- It meets D.O.T. requirements.
- It is in accordance with N.F.P.A. Standard No. 10, "Portable Fire Extinguisher".

4.3 Fire Detection System

A standard fire detection system is installed in the mobile unit. The fire detection system works via photoelectric smoke detectors located on the ceiling panels in each room of the mobile unit. In the event of a fire being detected, an alarm will sound.



Figure 20: Smoke Detector



Figure 21: Fire Alarm Control Panel

- Reset Button: The reset button resets the system after it has been activated
- Trouble Silence Button: The trouble silence button will silence the horns that are activated after the alarm has been tripped.
- Disable Button: The disable button will shut the alarm system down for maintenance.

System Operation

During normal operation, the control unit remains in a supervisory mode. If one smoke detector goes into alarm, it will trigger the following actions.

1. The fire horn will sound continuously.
2. A "RED" alarm LED located on the front cover of the fire system control panel will illuminate.
3. The strobe light will flash.
4. The HVAC units will shutdown.

Pull Station

A pull station is located next to the staff door in the Control Room. When the pull station has been pulled, the steps outlined above will occur.



Figure 22: Fire Alarm Pull Station

Power Backup System

Primary 120V AC power to the fire system control panel is supplied from the 480V AC service panel. When the primary power is lost, on-line emergency batteries built into the system will provide 24 hours of supervisory power.

- When primary power is lost, both the green “POWER” LED and the yellow “TROUBLE” LED will flash.
- The “SYSTEM TROUBLE” and “POWER TROUBLE” LED’s will also begin to illuminate.
- The audible alert located inside of the system control panel will begin to BEEP.

The emergency batteries are rechargeable gel celled. They are also float charged to provide quick recovery after primary power is restored.

4.4 Marker Lights

Extra LED type marker and side turn signal lights are installed on the trailer body to assist the driver with maneuvering the mobile unit.

4.5 Warning Lights

Please Refer to [Section 13: Lighting System](#) for additional information in regards to these systems.

Section 5: Mobile Unit Setup Procedure



The stabilizing legs and rear suspension are not to be used to raise the mobile unit off the ground. The legs are meant only to level the unit and place it in a parked position. If the legs are used in an attempt to raise the mobile unit from the ground, serious damage may occur to the mobile unit.



A checklist can be found in Appendix A that may be used as a guideline for the following procedure.



The unit must be level prior to operating the slide-outs. Failure to level the unit first could result in irreparable damage to equipment.

5.1 Park the Mobile Unit

In order to join the mobile unit to the facility, place the unit on the pad per the site-planning guide. Set the trailer parking brake.

5.2 Lower the Front Stabilizing Legs

After the mobile unit has been parked on the pad per the site-planning guide, the front stabilizing legs must be lowered to stabilize the mobile unit before it can be used. Refer to [Figure 34: Front Stabilizing Leg Assembly](#) for the following procedure.

1. Move and hold the pump switch in the “Pump ON” position.
2. Pull the levers 1 and 2 towards you to extend the stabilizing legs to their extended position.
3. Extend the legs far until the front of the unit has been raised high enough to clear the fifth wheel.
4. Release the pump switch. The switch should automatically retract to the “Pump OFF” position.

5.3 Disconnect the Tractor

Once the landing legs have been lowered, the tractor can be disconnected from the mobile unit.

1. Verify that the mobile unit has been raised high enough to clear the tractor fifth wheel, and then disconnect the tractor from the mobile unit.
2. Do not disconnect the air and electrical lines.

5.4 Exhaust the air from the Air Suspension System

The rear stabilizing legs must be lowered prior to use of the medical system.

1. Pull buttons B and C out to completely exhaust the air suspension.

5.5 Lower the Rear Stabilizing Legs



The stabilizing legs and rear suspension are not to be used to raise the mobile unit off the ground. The legs are meant only to level the unit and place it in a parked position. If the legs are used in an attempt to raise the mobile unit from the ground, serious damage may occur to the mobile unit.

After the tractor has pulled from the mobile unit, the rear stabilizing legs can now be lowered into position. When lowering the rear stabilizing legs, lower them the minimum amount to level the mobile unit.

1. Move and hold the pump switch to the "PUMP ON" position.
2. Pull lever 3 away from the stabilizing leg control box until the leg touches the ground. This will lower the rear left side leg.
3. Pull lever 4 away from the stabilizing leg control box until the leg touches the ground. This will lower the rear right side leg.

5.6 Re-level the Mobile Unit

After the preceding steps have been completed, the mobile unit may no longer be level. Re-level the unit if necessary using the digital levels that have been provided. Refer to [Figure 11: Digital Levels](#) if needed.

5.7 Disconnect the Tractor Air and Electrical Lines



Failure to completely exhaust the suspension before uncoupling the air lines may result in damage to the suspension of the mobile unit.

After the mobile unit has been re-leveled, the tractor air and electrical lines can safely be removed. Refer to [Figure 10: Glad Hand Connections](#).

5.8 Lower the Auxiliary Support Legs

After the preceding steps have taken place, the auxiliary support legs can now be lowered. Refer to [Figure 34: Front Stabilizing Leg Assembly](#) for the following procedure.

1. Remove the pin that is currently holding the auxiliary leg in the transport position.
2. Lower the auxiliary support leg to within ½" of the sand shoe and insert the pin into the highest available hole to lock the leg in position.

5.9 Connect to Shore Power

NOTE: If shore power is not available, the power cable may be connected to the 100Kw generator receptacle on the rear side of the tractor.



Before connecting or disconnecting from shore power, it is imperative that the shore power connections be moved to the “OFF” position. Failure to do this can result in injury or death to the operator of the mobile unit.



It is the operator’s responsibility to verify that the shore power receptacle is of the same type and voltage as the connection that is supplied by Oshkosh Specialty Vehicles. Failure to do this can result in injury or death to the operator of the mobile unit as well as irreparable damage to the mobile unit.



Always inspect the power cable, connectors, and fasteners prior to usage. If during inspection, it is suspected that either internal or external damage has occurred, have a certified electrician inspect and repair the damage before using.

1. Verify that the shore power disconnect is in the “OFF” position.
2. Open the underbody compartment door and remove the power cable from the underbody compartments of the mobile unit.
3. Insert the Oshkosh Specialty Vehicles supplied connector into the shore power receptacle and spin the lock ring clockwise to secure the connection.
4. Secure the connector lock ring to the shore facility.
5. Move the shore power disconnect to the “ON” position.
6. Close the underbody compartment door; making sure that the access flap for the power cable has been released.

5.10 Switch from Generator Power to Shore Power



When switching from generator power to shore power the “480V AC FAULT” may illuminate and flicker. If the “480V AC FAULT” stays illuminated, reconnect to generator power and call a certified electrician before attempting to reconnect to shore power.



When turning the power selector switch for the incoming power, from one position to another, the selector must be paused for a minimum of five seconds, in the “OFF” position between selections. Failure to do so can result in damage to the equipment.

1. Open the front right side underbody compartment door.
2. Turn the unit power selector from “Generator” to “Line”. Be certain to pause for five seconds in between selections.
3. The two indicators on this panel will illuminate according to the power that is received.
 - a. If the supply of power is good, the green indicator labeled “480V AC OKAY” will illuminate.
 - b. If the supply of power is experiencing problems, such as being out of phase, the red indicator labeled “480V AC FAULT” will illuminate.

4. Since minor fluctuations in power are common, the “480V AC FAULT” may briefly flicker. This is to be expected. If the “480V AC FAULT” indicator light stays illuminated, switch back to generator power and contact a qualified electrician before operating the medical system.
5. If the power supply is good, the selector for the generator can be moved to the “STOP” position. Once this has been done, the generator will enter into a cooling phase and continue running for approximately five minutes. Do not continue to move the selector switch during this time, the generator will shut down automatically when this stage has completed.
6. Turn the Generator selector switch to the “OFF” position. Be certain to pause for five seconds in between selections.

Note: The Phase Power Monitor checks the incoming shore power to ensure that it has the correct phase rotation (ABC) and that all three phases are present. If all three phases are present and in the correct rotation, the 480 VAC Light, on the monitor, will illuminate.

If any phase is not present or if the phase rotation is not correct, the 480 VAC Fault Light will illuminate, and a piezo-electric horn will sound. Disconnect shore power immediately and investigate to determine the cause of the fault. See paragraph 7.2.

NOTE: If shore power is not available, the power cable may be connected to the 100Kw generator receptacle on the rear side of the tractor.



Figure 23: Line/Off/Generator (LOG) Switch

5.11 Connect the Phone and Data Lines

The phone and data lines can be found in the underbody storage compartments. Both the phone and data lines can now be connected from the outlets located in the underbody compartments to the receptacles located at the shore site.

The phone lines make use of Hubbell all weather connections. The data lines make use of CAT-5E cable and RJ-45 connections. Refer to [Figure 13: Phone & Data Line Connections](#).

5.12 Connect the Water Hose

The fresh water connection is located on right rear side of the unit next to the wheelchair lift door.

1. Remove the cap that covers the connection.
2. Attach the supplied water hose to this connection.
3. Attach the other end of the hose to facility provided faucet.
4. Turn on the water at the faucet.

5.13 Connect the Drain Hoses

1. Connect the HVAC condensate drain hose.
2. Connect the gray water drain hose.

5.14 Install the Stair Assembly (Exhibition Kitchen Entry)

NOTE: The stairs to the Exhibition Kitchen Entry must be installed first in order to provide access to the slide-out controls.

Attach the stairs directly to the mobile unit. The stairs can be setup easier with two people. The instructions are covered below.

Stair Assembly

1. Remove the all stair assemblies from the underbody compartments.
2. Install the clip of the stair assembly into the channel located underneath the Exhibition Kitchen Entry door.
3. Adjust the height of the stair legs as necessary to in order to level and secure the stairs.
4. Install the handrail into its operating position and secure in place with the hardware provided.
5. Close the doors to the underbody compartments.

5.15 Extend the Slide-outs

1. After the Exhibition Kitchen stairs has been installed, the slide-outs for the mobile unit can now be extended.
2. Verify that the underbody compartment doors are closed and that no obstacles are in the path of the slide-outs.
3. Enter the mobile unit and remove the restraining hardware that is being used to hold the slide-outs in the transport position.
4. Attach the slide-out control pendent to the connector in the cabinet above the oven in the Kitchen.



Do not retract the floor pins if the slide-outs are extended. The floor cylinder is pressurized when the slide-outs are extended and retracting the pins could result in severe personal injury.

5. Extend the forward left side slide-out approximately two (2) feet.
6. With the pendent in hand, move to a location inside the forward slide-outs and retract the pins that are being used to hold the forward left and right side slide-out floors in place.

NOTE: The forward left slide-out may need to be retracted to remove the floor pins.

7. Extend the forward left side slide-out.
8. Extend the forward right side slide-out.
9. Verify that the forward slide-outs are in the extended position and that the floors have been completely lowered and that a seal has been made.
10. Remove the slide-out control pendent from the attachment in the Kitchen and attach it to the connector on the partition wall inside the door leading into the Yoga Exercise Room.
11. Extend the rear left side slide-out approximately two (2) feet.
12. With the pendent in hand, move to a location inside the rear slide-outs and retract the pins that are being used to hold the left and right side slide-out floors in place.

NOTE: The rear left slide-out may need to be retracted to remove the floor pins.

13. Extend the rear left side slide-out.
14. Extend the rear right side slide-out.
15. Verify that the rear slide-outs are in the extended position and that the floors have been completely lowered and that a seal has been made.

5.16 Install the remaining Stair Assemblies

NOTE: The stairs to the Exhibition Kitchen Entry must be installed first in order to provide access to the slide-out controls.

Attach the stairs directly to the mobile unit. The stairs can be setup easier with two people. The instructions are covered in paragraph 5.12 above.

5.17 Remove Restraining Hardware and Position Equipment for Use.

The restraints are those used by the mobile unit manufacturer to secure loose equipment for transport. Various items may be secured while the unit is being transported. These items may consist of chairs, tables, monitors, doors, removable partition walls, cabinets, cameras, and various support equipment.

5.18 Door Canopy Deployment

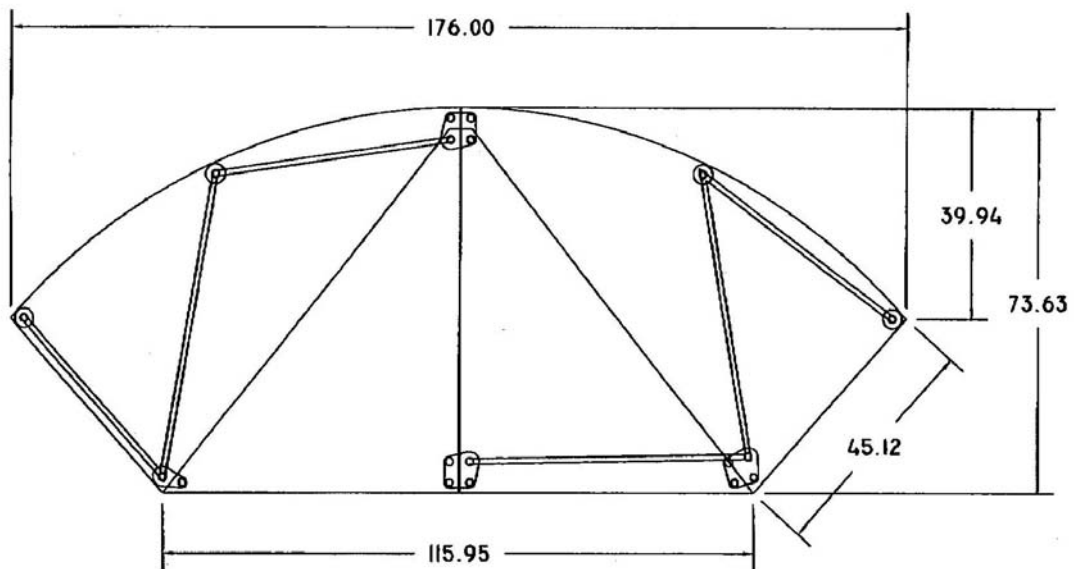
Install the canopies above the entry doors to the mobile unit. Please follow the instructions below and refer to [Figure 7: Door Canopy](#).

1. Remove the door canopies from their storage location inside the unit.
2. Unfold the door canopies and install the canopies above the appropriate doors.

5.19 Stage and Stage Canopy Deployment

Install the stage platform and canopy at the rear of the mobile unit. Please follow the instructions below.

1. Remove the Stage platform and canopy from their storage location inside the unit.
2. Open the sound wings at the rear of the unit.
3. Unfold the platform and canopy and assemble them for installation.
4. Install the stage platform.
5. Install the canopy to the sound wings above the stage platform.



Viewed from top of Stage

Figure 24: Stage Assembly Layout



Section 6: Mobile Unit Transport Procedure



If the mobile unit is moved without the rear air suspension functioning properly, irreparable damage can occur to the mobile unit.



The stabilizing legs and rear suspension are not to be used to raise the mobile unit off the ground. The legs are meant only to level the unit and place it in a parked position. If the legs are used in an attempt to raise the mobile unit from the ground, serious damage may occur to the mobile unit.



Before transporting the mobile unit, check to verify all warning lights as well as all exterior marker lights are working correctly.



A checklist can be found in Appendix A that may be used as a guideline for the following procedure.

6.1 Stage and Stage Canopy Removal

Remove the canopies. Please follow the instructions below.

1. Remove the stage canopy from the sound wings above the stage platform.
2. Remove the stage platform.
3. Disassemble the platform and canopy and fold for storage.
4. Return the platform and canopy to their storage location inside the unit.

6.2 Door Canopy Removal

Remove the door canopies. Please follow the instructions below and refer to [Figure 7: Door Canopy](#).

1. Remove the door canopies from above the doors.
2. Fold for storage.
3. Return the door canopies to their storage location inside the unit.

6.3 Secure all Equipment



The following procedure must be accomplished prior to transporting this vehicle. If these items are not accomplished, the "Transport Warning Light", located on the left side of the mobile unit will remain illuminated.

The restraints are those used by the mobile unit manufacturer to secure loose equipment for transport. Various items may be secured while the unit is being transported. These items may consist of chairs, tables, monitors, doors, removable partition walls, cabinets, cameras, and various support equipment. Use the supplied restraining hardware to secure these items before transporting the mobile unit.

6.4 Remove and Store the Stair Assemblies

Before removing the stair assemblies, check the interior of the unit one last time to verify that all equipment is secure and ready for transport.

The stair assemblies can be taken down easier with two people. The instructions are covered below.

Standard Stair System

1. Close and lock the door with the key that is provided.
2. Open the door to the underbody storage compartment.
3. Loosen the hardware holding the handrail in place. Remove the handrail from the stair assembly.
4. Lift the clip of the stair assembly up and away from the channel that is located underneath the door.
5. Place the stair assembly on the ground.
6. Using the sole of your shoe, step on the spring loaded release to retract the adjustable legs on each side of the stair assembly.
7. Place the stair assembly and handrail inside of the underbody storage compartment and close the compartment door.

NOTE: Remove all stair assemblies except the stairs to the Exhibition Kitchen. These stairs are required for access to the slide-out controls.

6.5 Retract Slide-outs to Transport Position

After the equipment has been secured in the transport position, the slide-outs can now be retracted.

1. Verify that the underbody compartment doors are closed and that no obstacles are in the path of the slide-outs.
2. Retrieve the slide-out control pendent from the cabinet above the oven and plug it in to the rear slide-out control outlet.
3. Verify that the rear left and right slide-outs are completely extended.
4. Retract the rear right side slide-out.
5. Secure the rear right side slide-out floor into the transport position with the transport pins and lock in place.
6. With the pendent in hand, move to a safe location between the rear slide-outs taking care not to damage the pendent cable.
7. Retract the rear left side slide-out.
8. Secure the rear left side slide-out floor into the transport position with the transport pins and lock in place.
9. Extend the rear left side slide-out about two (2) feet and move to a location forward of the Yoga Room partition door.
10. Retract the rear left side slide-out.
11. Secure the rear slide-outs with the hardware provided.
12. Move to the Kitchen and plug the slide-out control pendent into the outlet in the cabinet above the oven.
13. Verify that the forward left and right slide-outs are completely extended.
14. Retract the forward right side slide-out.
15. Secure the forward right side slide-out floor into the transport position with the transport pins and lock in place.
16. With the pendent in hand, move to a safe location between the forward slide-outs taking care not to damage the pendent cable.
17. Retract the forward left side slide-out.
18. Secure the forward left side slide-out floor into the transport position with the transport pins and lock in place.
19. Extend the forward left side slide-out about two (2) feet and move to the Kitchen area.
20. Retract the forward left side slide-out.
21. Secure the forward slide-outs with the hardware provided.

6.6 Switch from Shore Power to Generator Power



When turning the power selector switch from one position to another, the selector must be paused for a minimum of five seconds, in the “OFF” position, between selections. Failure to do so can result in damage to the equipment.

Please refer to [Section 8: Generator](#), for the following procedure.

1. Open the front right side underbody compartment door.
2. Move the Generator Stop / Start selector switch to the “Start” position.
3. Allow the generator to run for approximately five (5) minutes.
4. Move the Unit Power Selector switch to the “GEN” position. Be certain to pause for five seconds in the “OFF” position between selections.
5. Close the underbody compartment door.

6.7 Remove the Shore Power Connection



Before connecting or disconnecting from shore power, it is imperative that the shore power connections be moved to the “OFF” position. Failure to do this can result in injury or death to the operator of the mobile unit.

NOTE: If shore power is not available, the power cable may be connected to the 100Kw generator receptacle on the rear side of the tractor.

1. At the facility shore power connection, or at the tractor mounted 100kw generator set, move the shore power disconnect to the “OFF” position.
2. Remove the connector from the receptacle.
3. Return the power cable to the storage compartment on the front of the unit.
4. Before closing the compartment door, verify that the power cable access door is closed and latched.

6.8 Disconnect Phone and Data Lines

Please refer to [Figure 13: Phone & Data Line Connections](#), for the following procedure.

1. Disconnect any phone and data lines that are currently attached to shore receptacles.
2. Open the compartment door and disconnect any phone and data lines that are connected in the underbody storage compartment.
3. Store the phone and data lines in the underbody storage compartment and close the compartment door.

6.9 Disconnect the Water Hose and Drain the Tanks

The water connection can be found on the right front side exterior of the mobile unit.

1. Turn off the water supply at the facility provided faucet.
2. Disconnect the hose from the faucet.
3. Remove the hose from the connection on the mobile unit.
4. Cover the hose connection on the mobile unit with the cap provided.
5. Coil the hose and store in the underbody compartment.
6. Open the waste tank drain valve inside the tank storage area.
7. Open the Kitchen faucet and allow the water to drain. This will drain the fresh water tank.
8. When the fresh water tank is empty, close the Kitchen faucet.
9. When the waste tank is drained, close the drain valve.
10. Disconnect the gray drain hose and store in the water compartment.
11. Disconnect the HVAC condensate drain hose and store in the forward left underbody compartment.

6.10 Remove and Store the Exhibition Kitchen Stair Assembly

Before removing the stair assembly, check the interior of the unit one last time to verify that all equipment is secure and ready for transport.

The stair assembly can be taken down easier with two people. The instructions are covered in paragraph 6.4 above.

6.11 Raise the Auxiliary Support Legs

Please refer to [Section 12: Stabilizing Legs](#) for the following procedure.

1. Remove the pins holding the auxiliary support legs in the locked positions.
2. Lift the auxiliary support legs high enough for the pin to be inserted into the lowest available hole, thereby holding the leg as high as possible.
3. Make sure this has been done for both auxiliary support legs. Failure to do this can damage the stabilizing legs when they are retracted.

6.12 Connect the Tractor Air and Electrical Lines

In order to remove the rear stabilizing stands, the air and electrical lines must first be connected from the tractor to the mobile unit. Please refer to [Figure 10: Glad Hand Connections](#) and follow the steps outlined below.

1. Back up the tractor to the mobile unit, but do not back under it at this time.
2. Attach the air and electrical lines from the tractor to the mobile unit.

6.13 Raise the Rear Stabilizing Legs

1. Hold the pump switch in the "PUMP ON" position.
2. Push lever 2 towards the control box until the leg is fully retracted.
3. Push lever 1 towards the control box until the leg is fully retracted.

6.14 Connect the Tractor to the Mobile Unit

Before connecting the tractor to the mobile unit, be certain that enough clearance has been left for the fifth wheel. If the fifth wheel cannot fit underneath the mobile unit, the front end must be raised. If it is necessary to raise the front of the mobile unit to clear the fifth wheel, please follow the steps below. Please refer to [Section 12: Stabilizing Legs](#), for the following procedure.

1. Move and hold the pump switch in the "ON" position.
2. Pull the levers towards you to extend the legs. This will lift the front end of the mobile unit.
3. Extend the legs high enough to clear the fifth wheel only.
4. Release the pump switch. The pump switch should automatically retract to the "Pump OFF" position.
5. Check to verify that enough room has been made for fifth wheel clearance and proceed with caution to connect the tractor to the mobile unit.
6. Verify that the fifth wheel is locked into position.

6.15 Raise the Front Stabilizing Legs

After the tractor has successfully connected to the mobile unit, the stabilizing legs can be raised. Refer to [Section 12: Stabilizing Legs](#) for the following procedure.

1. Move and hold the pump switch in the "ON" position.
2. Push the levers 3 and 4 away from you to retract the legs. This will retract the legs and lower the front end of the mobile unit.
3. Retract the legs to their transport positions.
4. Release the pump switch. The pump switch should automatically retract to the "Pump OFF" position.

6.16 Raise the Air Suspension System

1. Open the underbody compartment door to the air ride control valves.
2. Pull buttons B and C out.
3. Turn the manual control knob clockwise to increase air pressure. This will raise the rear of the unit. Do not raise the unit more than three (3) inches.



The air ride control valves must be in the normal ride position before the mobile unit can be transported. If the air ride control valves are not in the normal ride position, irreparable damage may occur to the mobile unit.

4. Return all valves to the normal ride position. All valves must be pushed in before the mobile unit can be transported.

<u>Valve A</u>	<u>Valve B</u>	<u>Valve C</u>
Pushed In	Pushed In	Pushed In

5. Close the underbody compartment door.

6.17 Verify that the Mobile Unit is ready for Transport

Before the mobile unit can be transported, a final check of all components is necessary. Please refer to the following when checking the mobile unit.

1. Have the chairs, monitors, doors, cabinets, cameras, and printers been secured? Make sure that all of these items have been secured with the supplied hardware prior to transporting the mobile unit.
2. Are all exterior doors closed and locked, including the underbody compartment doors? If not, make sure that all exterior doors are closed and locked.
3. Are all running & marker lights working correctly? If not, replace any bulb that is not working before transporting the mobile unit.
4. Are any warning lights illuminated? If so, check to find the cause of the warning. Do not move the mobile unit if any warning lights are flashing. If further assistance is needed, refer to the Oshkosh Specialty Vehicles VOL II Vendor Information binder for a list of local service representatives or call Oshkosh Specialty Vehicles for further assistance.
5. Is the fuel tank full? Check the fuel gauge located in the Generator compartment. Fill the fuel tank if necessary.
6. Verify that the air suspension system is fully inflated and at the proper ride height. The lowest point of the trailer sidewall should be approximately 15" above ground level.



Section 7: Electrical System



Electrical, mechanical, pneumatic, and hydraulic safety devices have been installed on this vehicle to help protect against personal injury and / or damage to equipment. Under no circumstances should any attempt be made to disconnect or in any way render any of these devices inoperative. If a malfunction of any safety device is discovered to exist, DO NOT operate the vehicle, but immediately notify appropriate maintenance personnel.



Use and follow the appropriate Lockout/Tagout procedures as required by OSHA Standard 1910.147 when performing maintenance or servicing any electrical, hydraulic or pneumatic systems. See Appendix E for Lockout/Tagout procedures.



Before connecting or disconnecting from shore power, it is imperative that the shore power connections be moved to the "OFF" position. Failure to do this can result in injury or death to the operator of the mobile unit.



It is the operator's responsibility to verify that the shore power receptacle is of the same type and voltage as the connection that is supplied by Oshkosh Specialty Vehicles. Failure to do this can result in injury or death to the operator of the mobile unit as well as irreparable damage to the mobile unit.

The entire electrical system is installed in conformance with the National Electric Code.

The system is completely installed in the factory. Service access is gained through the underbody compartments of the mobile unit with thin wall conduit and/or wire-mold sized to accept the required service entrance conductors used throughout the mobile unit.

All electrical materials, devices, appliances, fittings, and other equipment are approved and listed by Underwriters' Laboratories, Inc. (UL).

All required tags, labels and rating nameplates are permanently installed in their proper locations before the mobile unit leaves the factory.

There are several panels used in the electrical system.

1. The Line/Off/Generator (LOG) Switch is located in the right front underbody compartment next to the 480V AC Electrical Distribution Panel.
2. One 480V AC electrical distribution panel that is located in the right front underbody compartment of the mobile unit. This panel is used to control power to the air conditioning and heating components aboard the mobile unit and to the 120/208V AC 45 KVA transformer.
3. One 120/208V AC distribution panel that is located at the rear of the Unit in the Yoga Exercise Room. This panel is responsible for all other AC powered components aboard the mobile.

7.1 120/208 & 480V AC Electrical Panels

The 120/208 & 480V AC electrical panels are responsible for the power supplies to the equipment aboard the mobile unit. If a problem exists with the equipment, or the power supply to them, a circuit breaker will trip in order to prevent damage. On the inside of the panel access door, a listing of all the circuit breakers can be found.



[Figure 25: 480V and 120/208V AC Electrical Panels](#)

7.2 480V AC Phase Power Monitor



Make sure that all electrical parts are serviced only by a certified electrician or qualified personnel. Dangerous voltages are present which could result in injury or death.

The 480V AC Phase Power Monitor checks the incoming shore power to ensure that it has the correct phase rotation (ABC) and that all three phases are present. If all three phases are present and in the correct rotation, the 480 VAC Light, on the monitor, will illuminate.

If any phase is not present or if the phase rotation is not correct, the 480 VAC Fault Light will illuminate, a piezo-electric horn will sound. Disconnect shore power immediately and investigate to determine the cause of the fault.

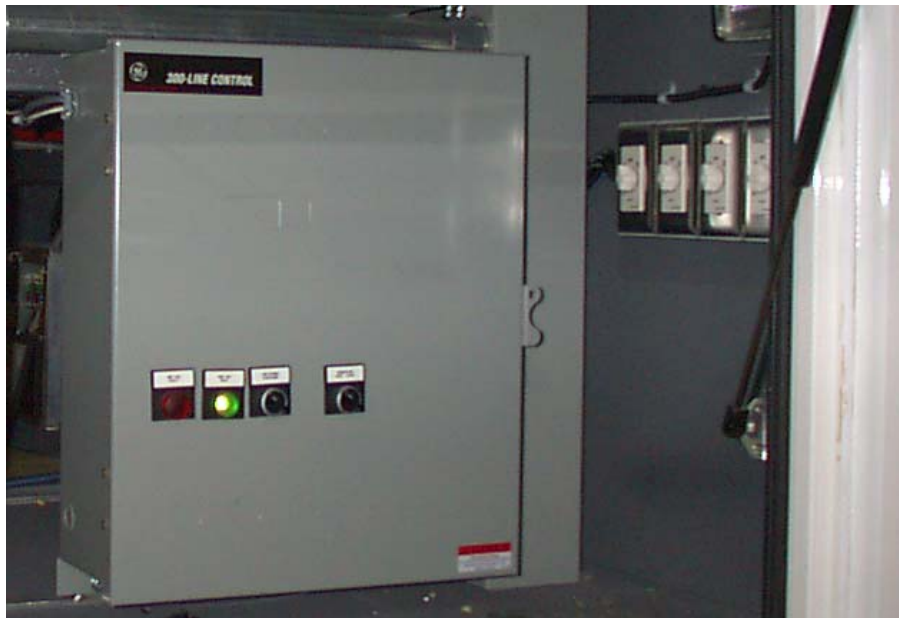


Figure 26: 480V AC Phase Power Monitor

7.3 Facility Power Connection



Figure 27: Shore Power Connection

Although the shore power connection is not an actual physical feature of the mobile unit, it is an integral part of the daily operations.

Oshkosh Specialty Vehicles Connector:

The plug that is provided by Oshkosh Specialty Vehicles for connection to the shore power receptacle.

Power Cable:

The cable that runs between the shore power connections and the 480V ac electrical panel.

Shore Power Disconnect:

The shore power disconnect terminates the power to the receptacle. This must be in the "OFF" position when connecting to the receptacle.

Shore Power Receptacle Outlet:

The receptacle outlet that the shore facility has installed for use with the Oshkosh Specialty Vehicles connector and power cable.

Shore Power Unit:

The complete shore power assembly.

Circuit Breaker	
Manufacturer:	Facility provided
Ampere Rating:	200 A disconnect

Receptacle	
Manufacturer:	Russellstoll
Model:	#DF 2504 FRAB0
Ampere Rating:	200 A



7.4 Power Cable

<u>Descriptions:</u>	<u>Specifications</u>
Service Amps:	150 A
5 Wire:	3 pole plus neutral and ground
Power Plug	Russellstoll # DS2504MP000/DF2032
Cord:	150 A, a #1/0 4 conductor type G, 600V – 2000V, 90° C, 45'-0" (13.71m) long



Section 8: Generator



Use and follow the appropriate Lockout/Tagout procedures as required by OSHA Standard 1910.147 when performing maintenance or servicing any electrical, hydraulic or pneumatic systems. See Appendix E for Lockout/Tagout procedures.



Make sure that all electrical parts are serviced only by a certified electrician or qualified personnel. Dangerous voltages are present which could result in injury or death.



Always make sure that eyes are protected while servicing the unit. Wear safety goggles when prying, drilling, grinding, or working with batteries. Wear safety goggles over regular prescription glasses unless the lenses are made of hardened glass and can serve as safety goggles.



Be certain to disconnect the power before working on any of the electrical systems.



Before connecting or disconnecting from shore power, it is imperative that the shore power connections be moved to the "OFF" position. Failure to do this can result in injury or death to the operator of the mobile unit.



It is the operator's responsibility to verify that the shore power receptacle is of the same type and voltage as the connection that is supplied by Oshkosh Specialty Vehicles. Failure to do this can result in injury or death to the operator of the mobile unit as well as irreparable damage to the mobile unit.



Always inspect the power cable, connectors, and fasteners prior to usage. If during inspection, it is suspected that either internal or external damage has occurred, have a certified electrician inspect and repair the damage before using.



When servicing the unit be certain that a first aid kit and fire extinguisher are within reach at all times.

The mobile unit is equipped with a generator that is mounted on the front of the unit in its own compartment below the air conditioning units. The generator supplies power to the unit during transport. The generator can also be able to power the medical system so the medical procedures can take place when shore power is unavailable.

The generator oil, as well as the oil filter, air filter, and fuel filter must be changed every 250 hours or six months of service, whichever comes first. The number of hours the generator has been in operation can be obtained by checking the microprocessor located on top of the staging unit in the generator compartment.

Once a year, the fuel separator should be checked for contamination and accumulation of debris.

For additional information, refer to the Oshkosh Specialty Vehicles VOL II Vendor Information binder for the product manual.



Figure 28: Generator Compartment

- 120V AC Power Outlet:** An additional outlet has been provided for the operator of the mobile unit to be used if needed.
- Air Filter:** The air filter is responsible for removing all contaminants from the generators air supply.
- Battery:** The battery is used to start the generator.
- Fuel Filter:** The fuel filter is responsible for removing all contaminants from the fuel supply.
- Fuel Pump:** Supplies the generator with fuel from the fuel tank.
- Generator Motor:** The actual motor of the generator.
- Microcomputer:** The microcomputer provides the operator with information that is needed for service purposes.
- Oil Filter:** The oil filter is responsible for removing all contaminants form the oil supply.

8.1 Generator Start/Stop Switch

This switch is located in the underbody compartment of the mobile unit on the 480V AC electrical panel, and is labeled "Generator START/STOP". To start the generator, the switch must be in the START position and the generator unit will start. To stop the generator, select the STOP position.

Section 9: HVAC System



The HVAC system is critical to the operation and life of the medical system. The medical system operates within strict specifications regarding temperature and humidity. All aspects of the HVAC system such as damper settings, venting, component set points, and sensor placement are adjusted for optimum operation. Under no circumstances should these settings be altered.



The GE medical system requires the HVAC system to be supplied power at all times. During transit of the mobile unit via the generator and when the unit is in the parked position via shore power.



Figure 29: A/C Units

Two air conditioning units are used to maintain the internal environment of the mobile unit. Both air conditioners come from the factory preset to the specifications required by the medical system manufacturer. Under no circumstances should the factory presets be changed or altered from their factory setting. Irreparable damage can occur to the medical system if this is done.

The HVAC system is designed specifically to maintain only the internal environment of the mobile unit. The HVAC system is not designed to handle areas outside of the mobile unit, such as adjoining corridors or hallways. It is important to keep all exterior doors closed at all times. All interior doors, computer doors, partitions, and damper settings, must be in the intended positions before running the medical equipment. Do not attempt to store any boxes or items in the mobile unit, as this will interrupt the intended airflow requirements.



In order to ensure proper operation of the HVAC system at all times, refer to [Section 15: General Maintenance](#) and [Section 16: Specific Maintenance](#).

9.1 System Specifications and Descriptions

- The HVAC system is completely designed and installed in full conformance with all applicable codes.
- The HVAC system utilizes forced air.
- The HVAC utilizes electricity as the source of power.
- Heat producing appliances must be approved by Underwriters Laboratories, Inc. (U.L.) and installed in accordance with the terms on their listings.
- The air ducts are constructed of approved materials and installed in conformance with all applicable codes.
- Air conditioning and heating registers are installed in accordance with the approved plans.
- Return air is provided as required and is in full conformance with all applicable codes.
- All warning and identification labels as required are installed at the factory.
- All aspects of the HVAC system such as damper settings, venting, component set points, and sensor placement are adjusted for optimum operation. Under no circumstances should these settings be altered.
- Two separate and individually controlled units provide air conditioning and heating for the mobile unit.
- The air conditioning ductwork is lined with a sound absorbent material for reduced noise and operator and patient comfort.

9.2 Exterior HVAC Specifications

The HVAC system is designed to work within certain limitations. The ambient exterior temperatures must be within the range of -20°F to 110°F.

9.3 Interior HVAC Specifications

Each air conditioner has a cooling capacity of 60,000 BTUH. The temperature in each room is maintained at approximately 70°F with an acceptable range of 68° to 72°F. Both air conditioned and heated air is distributed through an insulated duct which starts at the discharge side of the air conditioner.

A heating controller is provided to help regulate the heat. The controller incorporates a preset sensor, which activates heat strips in the air conditioning unit. The heat will activate when the temperature drops below 68°F. When the temperature rises above this setting, the heat strips will deactivate. The controller is located in the in the return air duct vent. The controller is powered by a 12V terminal block located in the air conditioning unit, and is wired using standard 5c Accustat wire.

Air is returned to the air conditioner via ceiling vents located throughout the mobile unit. Each duct is strategically placed over the equipment for adequate ventilation. These return air ducts are located in each room and draw air from all rooms.

Two 18" x 18" x 1" and two 18" x 22" x 1" fiber core air filters are provided at the air return duct of each air conditioning and heating unit. This filter provides dust free air throughout the interior of the mobile unit. The air filters are accessible through water compartment door the leads to the front of the plenum.

9.4 Underbody Compartment Heater

Located in the underbody compartments are two (2) compartment heaters. These heaters provide 3KW of heat each at 120V AC, single phase. The compartment heater will activate when the temperature drops below 40°F and will deactivate when the temperature rises above approximately 45°F.

All aspects of the underbody have been insulated for all weather usage.



Figure 30: Heater

9.5 Penn Control Temperature Setting



The HVAC system is critical to the operation and life of the medical system. The medical system operates within strict specifications regarding temperature and humidity. All aspects of the HVAC system such as damper settings, venting, component set points, and sensor placement are adjusted for optimum operation. Under no circumstances should these settings be altered.

The temperature setting is controlled by the use of Penn Controls. The Penn Control must not be set outside of the parameters as defined by the medical system manufacturer.



Figure 31: Penn Temperature Control

Return Air Plenum

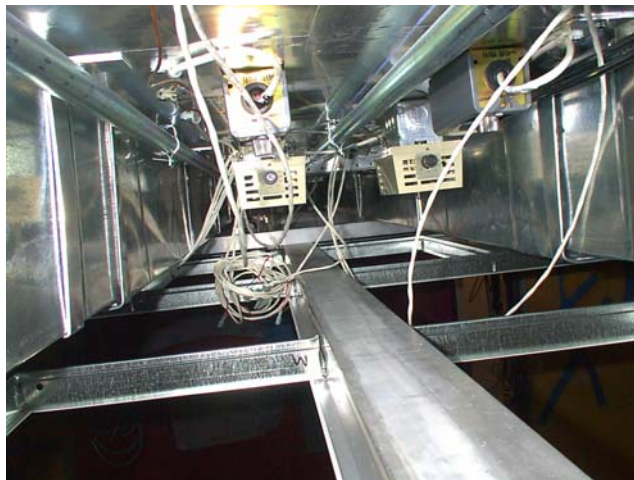


Figure 32: Penn Temperature and Humidity Controls Location

Section 10: Wheel Chair Lift

The mobile unit contains a wheel chair lift, Braun Model L211U58ARS, that is used to move personnel from the ground level to the floor level of the mobile unit. The wheelchair lift has a maximum design capacity of 800 lbs and a working capacity of 434 lbs. The lifting height is 46”.

Refer to the Service / Operations Manual, Volume II Vendor Information for Installation, Service and Maintenance requirements.



Section 11: Intrusion Alarm (optional)

An optional intrusion alarm is available for the mobile unit. This alarm is designed to divert would be intruders from theft, vandalism, or unauthorized entrance of the mobile unit.



Figure 33: Intrusion Alarm Keypad

11.1 Operation

The alarm is operated via a keypad located by the staff door. When entering the mobile unit, the operator keys in a code to deactivate the alarm. When leaving the mobile unit, the operator keys in a code to activate the alarm. If either the staff entry door, or the compartment doors are opened while the alarm is activated, a siren will sound.

For additional information, refer to the Oshkosh Specialty Vehicles VOL II Vendor Information binder for the product manual.



Section 12: Stabilizing Legs



Under no circumstances should the stabilizing legs and the rear air suspension be used to lift the mobile unit from the ground. If any attempt is made to raise the unit from the ground using the only the stabilizing legs and the rear air suspension, serious damage can occur to the suspension system of the mobile unit.

Both the stabilizing legs and the auxiliary support legs can be found at the front and rear of the unit. The stabilizing legs installed on this mobile unit are only for the purpose of parking and stabilizing the mobile unit. Please refer to the product manual located in Volume II of the literature provided by Oshkosh Specialty Vehicles for additional information.



Figure 34: Front Stabilizing Leg Assembly

Stabilizing Leg Controls:	The control box houses the stabilizing leg controls.
Stabilizing Leg:	Allows the mobile unit to be parked without the tractor being attached to the unit.
Digital Levels:	Allows the mobile unit to be leveled both front to back and side to side.
Lever 1:	Rear Right side leg.
Lever 2:	Rear Left side leg.
Lever 3:	Front Right side leg.
Lever 4:	Front Left side leg.
Air Suspension Control Switch	The "ON" position deflates the air bags. The "OFF" position inflates the air bags for normal ride.
Pump ON / OFF Switch	The switch must be held in the ON position when extending or retracting the legs.
Auxiliary Support Legs:	The auxiliary support legs provide a fixed leg for use as a backup in case the stabilizing legs fail.
Sand Shoe:	Helps prevent the stabilizing legs from sinking due to weight.

12.1 Rear Stabilizing Legs

The rear stabilizing legs are extended beneath the rear of the mobile unit, and allow the mobile unit to be stabilized. The legs are extended and retracted at the stabilizing leg control panel.

12.2 Rear Air Suspension System Controls



If the rear air suspension is not functioning properly the mobile unit must not be moved. If the mobile unit is moved, irreparable damage can occur to the medical system and the mobile unit itself.

The rear air suspension controls are located in the left rear underbody compartment.

Pull "OUT" A & B to Inflate the Suspension System.

Pull "OUT" B & C to Deflate the Suspension System.

Push "IN" A, B & C for Normal Ride.



Figure 35: Air Bag Controls

Section 13: Lighting System

The lighting provided for the mobile unit can be divided into either interior lighting, or exterior lighting. Listed below are explanations concerning the lighting provided.

13.1 Emergency Lighting

In the event that the main AC power fails, two emergency lights are provided. These lights will automatically illuminate when the main AC power is lost. The lights are located in the Exhibition Kitchen, Wellness Spa, and Yoga Exercise Room. The emergency lighting system is wired into a 120V AC electrical system that allows the lights internal circuitry to keep its batteries at 100% charge. The emergency lights will illuminate the exit doors and last for approximately 90 minutes.



Exhibition Kitchen Emergency Light



Wellness Spa and Yoga Exercise Room
Emergency Light

Figure 36: Emergency Lighting

13.2 Exterior Lighting

IMPORTANT All warning lights are located on the left side of the mobile unit.

The exterior lighting system can be divided as follows. For additional information of the warning lights Please refer to [Appendix B: Troubleshooting](#).

Underbody Compartment Lighting

Located inside of the underbody compartments there are wall mounted halogen lights connected to timers. The timers allow the lights to be set for up to 30 minutes before automatically turning off. There is one light provided on each side of the underbody.



Figure 37: Compartment Light

In addition, since the fuel compartment is sealed off from the others, a push button dome light has been included in this compartment.

Entrance Door Lighting / Exterior Service Lighting

A fixture that is located above the door provides the entrance door lighting.

The switch for this light is located inside of the mobile unit next to the entry door.



Figure 38: Entry Door Lighting

Marker & Running Lights

When the mobile unit is in transit, federal law requires specific illumination characteristics. The mobile unit meets and exceeds these standards as outlined in Motor Vehicle Safety Standards Guide, Federal Safety Standard No. 108-4.

All lights are 12V DC, and are powered by the tractor. All wiring is run through the underbody wire harnesses. The top marker lights are wired through a 0.5" loom pipe that is run through the sidewalls of the mobile unit. The wires terminate at the glad-hands which are located in the front of the mobile unit for tractor hookup. Two electrical connections are supplied on the glad-hands, one six terminal connection and one seven terminal connection.

13.3 Interior Lighting

The interior lighting system can be divided as follows.

Exhibition Kitchen

The light controls for the lighting in Exhibition Kitchen are located just inside the access door to that leads into Kitchen. Halogen Track lights have been strategically placed for effective illumination of the equipment both during operation and while being serviced.



Figure 39: Interior Overall Lighting

Kitchen Seating Area

The light controls for the lighting in Kitchen Seating Area are located just inside the access door to that leads into the room. Recessed light fixtures are located in the ceiling panels and have been strategically placed for effective illumination of the equipment both during operation and while being serviced. Halogen light fixtures have also been installed in the area to provide ambiance.



[Figure 40: Kitchen Seating Area Overall Lighting](#)

13.4 Warning Lights



Figure 41: Warning Lights

Warning lights have been installed on the exterior left side of the mobile unit in order to provide the operator and technician of the status of the mobile unit at all times during transit or while in the parked position. A description of each of the warning lights and their location can be found below. If any of the warning lights are illuminated, please refer to [Appendix B: Troubleshooting](#) for additional information.

AC Power Indicator Light



The GE medical system requires the HVAC system to be supplied power at all times. During transit of the mobile unit via the generator and when the unit is in the parked position via shore power.

The AC Power Indicator Light is located on the exterior left side of the mobile unit and will illuminate when the mobile unit is receiving power.

The mobile unit must have power at all times.

Transport Warning Light



If the Transport Warning Light is on, the mobile unit must not be moved. If the mobile unit is moved while this light is on, irreparable damage can occur to the mobile unit.

The Transport Warning Light is located on the exterior left side of the mobile unit and will illuminate when the Rear Stage Doors are not latched in the proper transport position or if the interior Mammography Suite interior door is not closed and locked in position for transport.

Suspension Transport Warning Light



The air ride control valves must be in the normal ride position before the mobile unit can be transported. If the air ride control valves are not in the normal ride position, irreparable damage may occur to the mobile unit.

The Suspension Transport Warning Light is located on the exterior left side of the unit and will illuminate when the air bags for the rear suspension are either not inflated, or the air pressure is too low. The air bags must be properly inflated prior to transporting the mobile unit. Failure to properly inflate the air bags can result in irreparable damage to the mobile unit.



Section 14: Slide-outs

This section contains important information in regards to general safety guidelines that must be followed at all times. Before servicing the mobile unit, read the section on safety and all other sections on safety found in any OEM supplied literature. The OEM supplied literature can be found in the product information binders that have been included with the mobile unit.



The unit must be level prior to operating the slide-outs. Failure to level the unit first could result in irreparable damage to equipment.

14.1 Slide-out Controls

The controls for the slide-outs are located in the Exhibition Kitchen for the forward slide-outs and in the Yoga Exercise Room for the rear slide-outs. One button on a remote control pendent controls both extend and the retract movements. A selector switch, located next to the control pendent outlet, is used to select the particular slide-out that is being controlled by the pendent.

When extending or retracting the slide-outs, please follow the instructions below:

Extending the Slide-outs

1. After the Exhibition Kitchen stairs has been installed, the slide-outs for the mobile unit can now be extended.
2. Verify that the underbody compartment doors are closed and that no obstacles are in the path of the slide-outs.
3. Enter the mobile unit and remove the restraining hardware that is being used to hold the slide-outs in the transport position.
4. Attach the slide-out control pendent to the connector in the cabinet above the oven in the Kitchen.



Do not retract the floor pins if the slide-outs are extended. The floor cylinder is pressurized when the slide-outs are extended and retracting the pins could result in severe personal injury.

5. Extend the forward left side slide-out approximately two (2) feet.
6. With the pendent in hand, move to a location inside the forward slide-outs and retract the pins that are being used to hold the forward left and right side slide-out floors in place.

NOTE: The forward left slide-out may need to be retracted to remove the floor pins.

7. Extend the forward left side slide-out.
8. Extend the forward right side slide-out.
9. Verify that the forward slide-outs are in the extended position and that the floors have been completely lowered and that a seal has been made.
10. Remove the slide-out control pendent from the attachment in the Kitchen and attach it to the connector on the partition wall inside the door leading into the Yoga Exercise Room.
11. Extend the rear left side slide-out approximately two (2) feet.



12. With the pendent in hand, move to a location inside the rear slide-outs and retract the pins that are being used to hold the left and right side slide-out floors in place.

NOTE: The rear left slide-out may need to be retracted to remove the floor pins.

13. Extend the rear left side slide-out.
14. Extend the rear right side slide-out.
15. Verify that the rear slide-outs are in the extended position and that the floors have been completely lowered and that a seal has been made.

Retracting the Slide-outs

1. After the equipment has been secured in the transport position, the slide-outs can now be retracted.
2. Verify that the underbody compartment doors are closed and that no obstacles are in the path of the slide-outs.
3. Retrieve the slide-out control pendent from the cabinet above the oven and plug it in to the rear slide-out control outlet.
4. Verify that the rear left and right slide-outs are completely extended.
5. Retract the rear right side slide-out.
6. Secure the rear right side slide-out floor into the transport position with the transport pins and lock in place.
7. With the pendent in hand, move to a safe location between the rear slide-outs taking care not to damage the pendent cable.
8. Retract the rear left side slide-out.
9. Secure the rear left side slide-out floor into the transport position with the transport pins and lock in place.
10. Extend the rear left side slide-out about two (2) feet and move to a location forward of the Yoga Room partition door.
11. Retract the rear left side slide-out.
12. Secure the rear slide-outs with the hardware provided.
13. Move to the Kitchen and plug the slide-out control pendent into the outlet in the cabinet above the oven.
14. Verify that the forward left and right slide-outs are completely extended.
15. Retract the forward right side slide-out.
16. Secure the forward right side slide-out floor into the transport position with the transport pins and lock in place.
17. With the pendent in hand, move to a safe location between the forward slide-outs taking care not to damage the pendent cable.
18. Retract the forward left side slide-out.
19. Secure the forward left side slide-out floor into the transport position with the transport pins and lock in place.
20. Extend the forward left side slide-out about two (2) feet and move to the Kitchen area.

21. Retract the forward left side slide-out.
22. Secure the forward slide-outs with the hardware provided.



Front Slide-out Control Switch Pendant



Rear Slide-out Control Switch Pendant

Figure 42: Slide-out Controls



Section 15: General Maintenance



Use and follow the appropriate Lockout/Tagout procedures as required by OSHA Standard 1910.147 when performing maintenance or servicing any electrical, hydraulic or pneumatic systems. See Appendix E for Lockout/Tagout procedures.



Make sure that all electrical parts are serviced only by a certified electrician or qualified personnel. Dangerous voltages are present which could result in injury or death.



Always make sure that eyes are protected while servicing the unit. Wear safety goggles when prying, drilling, grinding, or working with batteries. Wear safety goggles over regular prescription glasses unless the lenses are made of hardened glass and can serve as safety goggles.



Be certain to disconnect the power before working on any of the electrical systems.



When servicing the unit be certain that a first aid kit and fire extinguisher are within reach at all times.

15.1 Daily Maintenance

1. Fuel tank should be checked for proper fuel levels.
2. During cold weather, verify that all underbody heaters are operational.
3. Keep the air intake grills on the computer cabinets for the medical system free and clear of obstructions.
4. Keep the A/C grills clean and free of debris.
5. Check and verify that no warning lights are illuminated.

15.2 Weekly Maintenance

1. Check the A/C filters. Replace if necessary.
2. Check the oil and water levels in the generator and refill if necessary.
3. Check the electrolyte levels in the DC batteries and fill if necessary using only distilled water.
4. Check all running lights, marker lights, brake lights, and turn signals.
5. A qualified technician should check tire pressure and verify that all wheels are at the correct pressure as specified by the tire manufacturer.
6. Check the fluid level in the hydraulic reservoir using the site glass. Add fluid if necessary. Use only (AWF) All Weather Fluid.
7. Check wheel lug nuts with torque wrench and verify that all inner and outer wheels, both the front and rear, are tightened to 450-500 foot-pounds. This must be done after every 500 miles of driving. In accordance with torque procedure, lugs and nuts must be installed dry. Do not use any type of lubricant.

15.3 Monthly Maintenance

1. Put a few drops of 20W oil, or similar graphite oil, on the swivel pin of all door hinges and key openings of all door locks.
2. Check the operation of the smoke detectors and vacuum internally.
3. Check the fire extinguisher gauges for safe charges.
4. Inspect the power cables for any damage.
5. Check the cable tie downs.
6. Check for cut, damaged, or loose wire connections.
7. Check and verify that all connector bolts are tight and secure.
8. A qualified A/C technician must check the A/C condensers every month. Refer to the Air Conditioning Owner's Manual for more information.
9. Lubricate the front stabilizing legs.
10. Check wheel lug nuts with torque wrench and verify that all inner and outer wheels, both the front and rear, are tightened to 450-500 foot pounds. This must be done after every 500 miles of driving. In accordance with torque procedure, lugs and nuts must be installed dry. Do not use any type of lubricant.
11. The generator oil, as well as the oil filter, air filter, and fuel filter must be changed every 250 hours or six months of service, whichever comes first. The number of hours the generator has been in operation can be obtained by checking the microcomputer controller located on top of the staging unit in the generator bay. Refer to [Figure 28: Generator Compartment](#).

15.4 Quarterly Maintenance

1. Once a year, check the fuel separator for contamination or debris.
2. Once a year, perform the preventative maintenance on the stabilizing legs and the stabilizing leg controls. Refer to the accompanying manual for the stabilizing gear system.
3. Rotate the tires.
4. Check wheel lug nuts with torque wrench and verify that all inner and outer wheels, both the front and rear, are tightened to 450-500 foot pounds. This must be done after every 500 miles of driving. In accordance with torque procedure, lugs and nuts must be installed dry. Do not use any type of lubricant.

The following Preventive Maintenance Checklist must be completed each quarter. Oshkosh Specialty Vehicles has included in the Oshkosh Specialty Vehicles VOL I Service/Operation Manual binder, a Preventive Maintenance Checklist and Serial Number Chart in order to assist in organizing records of maintenance performed on your new OSV Vehicle. We believe that with proper maintenance performed on a regular basis, your vehicle will last longer and provide you with more up time.

A copy of your vehicles completed quarterly Preventive Maintenance Checklist may be required for warranty reimbursement.

Oshkosh Specialty Vehicle's Service department has certified technicians, genuine parts and the information technology needed for your assistance. Please call OSV service for you're servicing needs.

Thank you for choosing Oshkosh Specialty Vehicles. If you have any questions call us toll free at 1-800-839-0630. We'll be happy to assist you!!



Preventive Maintenance Checklist

Trailer ID # :	Date	Date	Date	Date	
HVAC	3M	6M	9M	12M	Comments
Inspect/change filters					
Inspect Thermostats					
Verify heat strip operation					
Inspect/clean evaporator coil					
Clean/inspect condenser coils					
Inspect electrical contactors					
Verify refrigerant pressures					
Inspect refrigeration piping abrasion					
Lubricate fan motors if applicable					
Inspect covers/fasteners					
Verify compressor amp draw					
Verify condensate pans/drains					
Verify Condenser motor operation					
Chiller	3M	6M	9M	12M	Comments
Inspect electrical contactors					
Verify refrigerant pressures					
Inspect refrigeration piping abrasion					
Inspect pump seal					
Lubricate motors					
Clean/replace aluminum filters					
Inspect covers/fasteners					
Verify operating/alarm controls					
Verify CW supply temp 45-75 F					
Inspect/replace glycol filter					
Clean/ inspect condensing coils					
Verify/adjust glycol level					
Verify Condenser motor operation					
Trailer	3M	6M	9M	12M	Comments
Test/inspect lift gate					
Inspect rails/ pins					
Inspect lift fittings/pivot points					
Clean / lubricate slide rails					
Verify lift switches and remote					
Load test van battery (lift)					
Verify hydraulic fluid level					
Verify van battery charger					
Verify roll door controls					
Inspect roll door mounting bolts					



Trailer Continued	3M	6M	9M	12M	Comments
Inspect roll door clutch/hardware					
Inspect roll door side track rails					
Inspect roll door key way					
Inspect awning					
Inspect bay door shocks/hardware					
Verify bay light operation					
Inspect clean and RF door gasket. Verify RF door operation					
Verify RF door lock and the handle operate correctly					
Check RF door for binding and loose hardware.					
Check door hinges/stops/latches for proper operation					
Inspect Slide outs for operation					
Inspect Slide out compressor					
Empty compressor drain and verify Y- strainer is cleaned out					
Check Fire system Last Inspection Date _____					
Inspect stair mounts					
Inspect interior flooring					
Verify bay heater operation					
Inspect cabinet latches and hinges					
Verify phone/communication lines					
Inspect landing gear					
Inspect locking pins					
Inspect air drive or air/hydraulic					
Inspect air tanks					
Verify hub fluid levels					
Inspect undercarriage/frame					
Inspect airbags/airlines/fittings					
Inspect shocks/bushings					
Inspect Tires / Rotate as needed					
Note hub meter mileage _____					

Generator	3M	6M	9M	12M	Comments
Clean fuel/water separator & replace filter					
Lamp test on control panel					
Inspect fuel lines & injectors					
Change oil/filters- 250 hrs					
Check crankcase breather					
Check hoses/belts					
Verify radiator coolant level					
Verify coolant freeze point & pH					



Generator Continued	3M	6M	9M	12M	Comments
Verify block heater operation					
Inspect housing mounting bolts					
Inspect muffler/brackets					
Verify battery charging voltage					
Load test battery/clean terminals					
Verify voltage & hertz output					
Record hours run since last P.M. (_____) Recorded Generator Hours					
Electrical	3M	6M	9M	12M	Comments
Inspect breakers and panels					
Inspect lighting and bulbs					
Inspect power cord and plug					
Inspect 110volt outlets					
Humidifier	3M	6M	9M	12M	Comments
Inspect/replace steam tank					
Verify humid control set point					
Inspect/fill water reservoir					
Clean fill and drain valves					
Verify 12 volt pump					
Misc.	3M	6M	9M	12M	Comments
Attach and/or fill out Quarterly Service Record for all major components					

Section 16: Specific Maintenance



Use and follow the appropriate Lockout/Tagout procedures as required by OSHA Standard 1910.147 when performing maintenance or servicing any electrical, hydraulic or pneumatic systems. See Appendix E for Lockout/Tagout procedures.



Make sure that all electrical parts are serviced only by a certified electrician or qualified personnel. Dangerous voltages are present which could result in injury or death.



Always make sure that eyes are protected while servicing the unit. Wear safety goggles when prying, drilling, grinding, or working with batteries. Wear safety goggles over regular prescription glasses unless the lenses are made of hardened glass and can serve as safety goggles.



Be certain to disconnect the power before working on any of the electrical systems.



The HVAC system is critical to the operation and life of the equipment. The medical equipment operates within strict limits regarding temperature and humidity. All aspects of the HVAC system such as baffling, venting, component set points, and sensor placement are adjusted for optimum operation. Under no circumstances should any aspect of the HVAC system be altered from factory specifications.



Image quality can be impaired with improper door closer adjustment.



A power washer should never be used to clean the A/C units. Serious damage to the A/C coils may occur.



When servicing the unit be certain that a first aid kit and fire extinguisher are within reach at all times.

16.1 Door Closer Adjustments

The door closer must be adjusted so that the door does not slam shut. Refer to the door closer component sheet in the component literature manual for proper adjustment. Adjust door closer as required to insure proper non-slamming door action.

16.2 Electrical System

1. Inspect the power cables for any damage.
2. Check the cable tie downs.
3. Check for cut, damaged, or loose wire connections.
4. Check and verify that all connector bolts are tight and secure.

16.3 Generator System

1. The generator oil, as well as the oil filter, air filter, and fuel filter must be changed every 250 hours or six months of service, whichever comes first. The number of hours the generator has been in operation can be obtained by checking the microcomputer controller located on top of the staging unit in the generator bay. Please refer to refer to [Figure 28: Generator Compartment](#).
2. Once a year, check the fuel separator for contamination or debris.

16.4 HVAC System



The HVAC system is critical to the operation and life of the equipment. The medical equipment operates within strict limits regarding temperature and humidity. All aspects of the HVAC system such as baffling, venting, component set points, and sensor placement are adjusted for optimum operation. Under no circumstances should any aspect of the HVAC system be altered from factory specifications.

1. The HVAC system is designed specifically to maintain only the internal environment of the mobile unit. The HVAC system is not designed to handle areas outside of the mobile unit such as adjoining corridors or hallways.
2. It is important to be sure that the doors, partitions, and baffling are in the intended positions before running the medical system.
3. Do not attempt to store boxes, or any other items near computer system air inlets or in the aisles. Such actions will disrupt the intended airflow requirements.
4. A qualified A/C technician must check the A/C condensers every month. Refer to the Air Conditioning Owner's Manual for more information.

16.5 Stabilizing Legs

Once a year, perform the preventative maintenance on the stabilizing legs and the stabilizing leg controls. Refer to the accompanying manual for the stabilizing gear system.

1. Change the oil in the stabilizing leg control box and refill with six (6) quarts of PG-AWF or other approved fluid to port level.
2. Add one pint of permanent anti-freeze as necessary.
3. Extend the stabilizing legs and coat lightly with clean grease.
4. Grease the alemite fittings and check the valve on each leg. Use "NGLI" lithium grease with a grade of "00" or "0".
5. Check the fittings and the hydraulic lines for leaks or worn spots. Replace all defective fittings and lines as necessary.
6. Check for loose bolts and nuts. Tighten as necessary.

Appendix A: Mobile Unit Checklist



It is the operator's responsibility to verify that the shore power receptacle is of the same type and voltage as the connection that is supplied by Oshkosh Specialty Vehicles. Failure to do this can result in injury or death to the operator of the mobile unit as well as irreparable damage to the mobile unit.



Before connecting or disconnecting from shore power, it is imperative that the shore power connections be moved to the "OFF" position. Failure to do this can result in injury or death to the operator of the mobile unit.



Make sure that all electrical parts are serviced only by a certified electrician or qualified personnel. Dangerous voltages are present which could result in injury or death.



Always make sure that eyes are protected while servicing the unit. Wear safety goggles when prying, drilling, grinding, or working with batteries. Wear safety goggles over regular prescription glasses unless the lenses are made of hardened glass and can serve as safety goggles.



Be certain to disconnect the power before working on any of the electrical systems.



Always inspect the power cable, connectors, and fasteners prior to usage. If during inspection, it is suspected that either internal or external damage has occurred, have a certified electrician inspect and repair the damage before using.



The stabilizing legs and rear suspension are not to be used to raise the mobile unit off the ground. The legs are meant only to level the unit and place it in a parked position. If the legs are used in an attempt to raise the mobile unit from the ground, serious damage may occur to the mobile unit.



Failure to completely exhaust the suspension before uncoupling the airlines may result in damage to the suspension of the mobile unit.



The air ride control valves must be in the "OFF" / normal ride position before the mobile unit can be transported. If the air ride control switch is not in the normal ride position, irreparable damage may occur to the mobile unit.



Before transporting the mobile unit, check to verify all warning lights as well as all exterior marker lights are working correctly.



When servicing the unit be certain that a first aid kit and fire extinguisher are within reach at all times.

Mobile Unit Setup Checklist

1. Park the mobile unit on the pad per the site-planning guide. Set the trailer parking brake.
2. Lower the front stabilizing legs.
3. Disconnect the tractor while leaving the air and electrical lines engaged.
4. Exhaust the rear suspension.
5. Lower the rear stabilizing legs.
6. Re-level the mobile unit as needed.
7. Disconnect the tractor air and electrical lines.
8. Lower the auxiliary support legs.
9. Verify that the shore power disconnect is in the "OFF" position and connect to the power cable to the shore power receptacle.
10. Move the shore power disconnect to the "ON" position. Switch from generator power to Line power with the LOG switch.
11. Connect the phone and data lines.
12. Connect the water supply and drain connections.
13. Install the kitchen stair assembly
14. Remove all slide-out restraining hardware.
15. Extend the slide-outs.
16. Install remaining stair assemblies.
17. Remove restraining hardware and position equipment for use.
18. Deploy the door canopies for use.
19. Deploy stage and stage canopy.

Mobile Unit Transport Checklist

1. Remove the stage and stage canopy.
2. Remove the door canopies from the entry doors.
3. Secure all equipment.
4. Secure all moveable objects such as chairs, monitors, doors, cabinets, cameras, and printers.
5. Remove and store all stair assemblies except the Exhibition Kitchen stairs.
6. Verify the slide-outs are fully extended and then retract the slide-outs.
7. Secure the slide-outs and slide-out floors with hardware provided.
8. Drain the fresh water and waste water tanks and remove connections.
9. Remove and store the Exhibition Kitchen stair assembly.
10. Move the shore power disconnect to the "OFF" position and disconnect to the power cable from the shore power receptacle. Start the generator and select the generator with the LOG switch to supply power to the unit.
11. Disconnect the phone and data lines.
12. Raise the auxiliary support legs.
13. Connect the tractor air and electrical connections.
14. Retract the rear stabilizing legs.
15. Connect the tractor to the mobile unit.
16. Raise the front stabilizing legs.
17. Inflate the rear air bags by pushing "In" all three Air control valve buttons.
18. Verify that the mobile unit is ready for transport.
 - a. Are all exterior doors closed and locked, including the underbody compartment doors?
 - b. Are all running & marker lights working correctly?
 - c. Are any warning lights illuminated?
 - d. Is the fuel tank full?
 - e. Verify that the air suspension system is fully inflated and at the proper ride height. . The lowest point of the trailer sidewall should be approximately 15" above ground level.





Appendix B: Troubleshooting

If any of the following troubleshooting guides do not correct the problem, or if the problem worsens, please contact Oshkosh Specialty Vehicles for service, or refer to the volumes of literature that shipped with the mobile unit. In these volumes you will be able to find individual product manuals, as well as a list of local service representatives.

AC Power Indicator Light is off...

If the AC Power Indicator Light is “OFF” then the mobile unit is not receiving AC power. The mobile unit must have power at all times. If the mobile unit is on site, shore power must be connected.

If the mobile unit is being transported, then the vehicle must be stopped and the following items checked. For any additional information, please contact Oshkosh Specialty Vehicles.

Generator power is connected when the A/C power Off strobe light illuminates:	
1.	Verify that the fuel tank has fuel.
2.	Verify that the Generator selector has been moved to the “Start” position.

Transport Warning Light is on...



If the Transport Warning Light is on, the mobile unit must not be moved. If the mobile unit is moved while this light is on, irreparable damage can occur to the mobile unit.

If the Transport Warning Light is illuminated, the mobile unit is not ready for transport. Before the mobile unit can be transported, this light must be off. Please refer to the following table:

Problem:		Solution:
Stage Doors are not in the proper transport position	1.	Make sure the stage doors are closed and locked in position for transport.

Suspension Transport Indicator Light is Illuminated...



If the Suspension Transport Indicator Light is on, the mobile unit must not be moved. If the mobile unit is moved without the rear air suspension functioning properly, irreparable damage can occur to the mobile unit.

If the Suspension Transport Indicator Light is on, the rear air bags / suspension of the mobile unit are not ready for transport. This light must be off to move the mobile unit. Check the rear air bag suspension control valve buttons. The buttons must be in the “In” position. This is the normal ride position.

If the buttons are in the correct position and the light still appears a problem exists within the rear suspension. Please contact Oshkosh Specialty Vehicles.

Temperature is out of specifications...

If the temperature is out of specifications, either too high or too low, refer to the following table.

Problem:		Check for:	Solution:
The temperature inside of the mobile unit is too warm.	1.	Check for exterior doors left open during warm weather conditions.	The HVAC system can only support the environment of the mobile unit. Unless opened for use, all exterior doors should remain closed all of the time.
	2.	Check for blocked or dirty air vents and/or air conditioner filters.	Clean the air vents and/or change the air conditioner filters. After this has been done, verify that cold air is blowing.
	3.	Check to see if the A/C disconnect is in the "OFF" position.	Turn the A/C disconnect to the "ON" position.
	4.	The Penn Control settings are correct.	Verify that the Penn Control is set at 68°F. Please contact Oshkosh Specialty Vehicles for further assistance.
The temperature inside of the mobile unit is too cold.	1.	Check for open exterior doors left open during cold weather conditions.	The HVAC system can only support the environment of the mobile unit. Unless opened for use, all exterior doors should remain closed all of the time.
	2.	Check for blocked or dirty air vents and/or air conditioner filters.	Clean the air vents and/or change the air conditioner filters. After this has been done, verify that warm air is blowing.
	3.	Check to see if the A/C disconnect is in the "OFF" position.	Turn the A/C disconnect to the "ON" position.
	4.	The Penn Control settings are correct.	Verify that the Penn Control is set at 69°F. Please contact Oshkosh Specialty Vehicles for further assistance.



Appendix C: HVAC Set Points



The HVAC system is critical to the operation and life of the equipment. The medical equipment operates within strict limits regarding temperature and humidity. All aspects of the HVAC system such as baffling, venting, component set points, and sensor placement have been adjusted for optimum operation. Under no circumstances should any aspect of the HVAC system be altered from factory specifications.



Be certain that the HVAC system is operational at all times.

There are two set points for the HVAC system. These points are set at the factory and should not be changed under any circumstances. Altering these points can result in damage to the medical equipment.

Temperature Controller Settings

The high temperature sensor is set at 69°F. If the ambient temperature in the mobile unit reaches 69°F, the HVAC system will automatically start in order to cool the unit.

The low temperature sensor is set at 68°F. If the ambient temperature in the mobile unit reaches 68°F, the HVAC system will automatically start in order to warm the unit.



Appendix D: Circuit Malfunction Checklist

Category 1

Visual Checks – Check for the most common occurrences.

1. Is the circuit breaker, in the 480V AC electrical panel, in the “ON” position?

Category 2

Component Checks – (some tools may be required).

N/A

For additional troubleshooting, please contact Oshkosh Specialty Vehicles for assistance.



Appendix E: Lockout/Tagout Procedures

Specific Energy Control Procedures

Machine or Equipment for this Procedure:

Specialty Vehicle Trailer: **GE Moving Experiences Wellness Unit**

Control of Hazardous Energy:

Type of Hazardous Energy	When is it Necessary to Lock Out
Electrical 480V AC	When servicing main electrical power line
Electrical 120/208V AC room circuits	When servicing or performing installation inside specific sections of the trailer
Electrical 12V DC	When servicing the following: Generator, Wheelchair Lift, Slide-out, Hydraulic System, Digital Levels, Lights
Electrical 12V DC From Battery	When servicing the following: Generator, Wheelchair Lift, Slide-out, Hydraulic System, Digital Levels, Lights

Affected Personnel to notify when the Specialty Vehicles Trailer is to be Locked Out:

Name/Department:	Location:
Production employees	In the vicinity of the trailer



Shut down specifications for the Specialty Vehicle Trailers:

Energy Type and Rating:	Type of Energy Isolating Device:	Location of Energy Isolating Device:	Lockout Device Used:
Main power feed Electrical 480V AC	Circuit Breaker or Plug	Normally located above the Facility Power Shore	Lock and tag with or without lockout hasp
Light or outlet circuits Electrical 120/208V AC	Wall switch or circuit breaker	Distribution panel for circuit breaker, wall switch for room circuits	Lock and tag with a Universal Wall Switch Lockout, Universal Circuit Breaker Lockout
Generator Power engaged when main power is lost	Generator Breaker Switch	Inside service panels, on front of Generator control cover.	Lock and tag with a Circuit Breaker Lockout attachment device
Power to lift panels Electrical 12V DC	Breaker Switch	Inside service panels	Lock and tag with a Circuit Breaker Lockout attachment device
Electrical 12V DC From Battery	Remove Battery Cables	On battery	Lock and tag with a Plug Lockout attachment device
Air Conditioning System	Circuit Breaker	480V AC Panel in equipment area	Lock and tag with or without lockout hasp
Heating System	Air Conditioning Circuit Breaker	480V AC Panel in equipment area	Lock and tag with or without lockout hasp

Methods to dissipate energy:

N/A

Method of Verifying the Isolation of the Machine or Equipment:

Voltmeter



Appendix F: Quarterly Maintenance Checklist



PREVENTIVE MAINTENANCE CHECKLIST

Company Performing Preventive Maintenance:

Service Technician:

Trailer ID # :	Date	Date	Date	Date	
HVAC	3M	6M	9M	12M	Comments
Inspect/change filters					
Inspect Thermostats					
Verify heat strip operation					
Inspect/clean evaporator coil					
Clean/inspect condenser coils					
Inspect electrical contactors					
Verify refrigerant pressures					
Inspect refrigeration piping abrasion					
Lubricate fan motors if applicable					
Inspect covers/fasteners					
Verify compressor amp draw					
Verify condensate pans/drains					
Verify Condenser motor operation					
Chiller	3M	6M	9M	12M	Comments
Inspect electrical contactors					
Verify refrigerant pressures					
Inspect refrigeration piping abrasion					
Inspect pump seal					
Lubricate motors					
Clean/replace aluminum filters					
Inspect covers/fasteners					
Verify operating/alarm controls					
Verify CW supply temp 45-75 F					
Inspect/replace glycol filter					
Clean/ inspect condensing coils					
Verify/adjust glycol level					
Verify Condenser motor operation					



Trailer	3M	6M	9M	12M	Comments
Test/inspect lift gate					
Inspect rails/ pins					
Inspect lift fittings/pivot points					
Clean / lubricate slide rails					
Verify lift switches and remote					
Load test van battery (lift)					
Verify hydraulic fluid level					
Verify van battery charger					
Verify roll door controls					
Inspect roll door mounting bolts					
Inspect roll door clutch/hardware					
Inspect roll door side track rails					
Inspect roll door key way					
Inspect awning					
Inspect bay door shocks/hardware					
Verify bay light operation					
Inspect clean and RF door gasket. Verify RF door operation					
Verify RF door lock and the handle operate correctly					
Check RF door for binding and loose hardware.					
Check door hinges/stops/latches for proper operation					
Inspect Slide outs for operation					
Inspect Slide out compressor					
Empty compressor drain and verify Y-strainer is cleaned out					
Check Fire system Last Inspection Date					
Inspect stair mounts					
Inspect interior flooring					
Verify bay heater operation					
Inspect cabinet latches and hinges					
Verify phone/communication lines					
Inspect landing gear					
Inspect locking pins					
Inspect air drive or air/hydraulic					
Inspect air tanks					
Verify hub fluid levels					
Inspect undercarriage/frame					
Inspect airbags/airlines/fittings					
Inspect shocks/bushings					
Inspect Tires / Rotate as needed					
Note hub meter mileage _____					



Generator	3M	6M	9M	12M	Comments
Clean fuel/water separator & replace filter					
Lamp test on control panel					
Inspect fuel lines & injectors					
Change oil/filters- 250 hrs					
Check crankcase breather					
Check hoses/belts					
Verify radiator coolant level					
Verify coolant freeze point & pH					
Verify block heater operation					
Inspect housing mounting bolts					
Inspect muffler/brackets					
Verify battery charging voltage					
Load test battery/clean terminals					
Verify voltage & hertz output					
Record hours run since last P.M. () Recorded Generator Hours					

Electrical	3M	6M	9M	12M	Comments
Inspect breakers and panels					
Inspect lighting and bulbs					
Inspect power cord and plug					
Inspect 110volt outlets					

Humidifier	3M	6M	9M	12M	Comments
Inspect/replace steam tank					
Verify humid control set point					
Inspect/fill water reservoir					
Clean fill and drain valves					
Verify 12 volt pump					

Misc.	3M	6M	9M	12M	Comments
Attach and/or fill out Quarterly Service Record for all major components					

Comment :



Signature of Technician:

Date:
