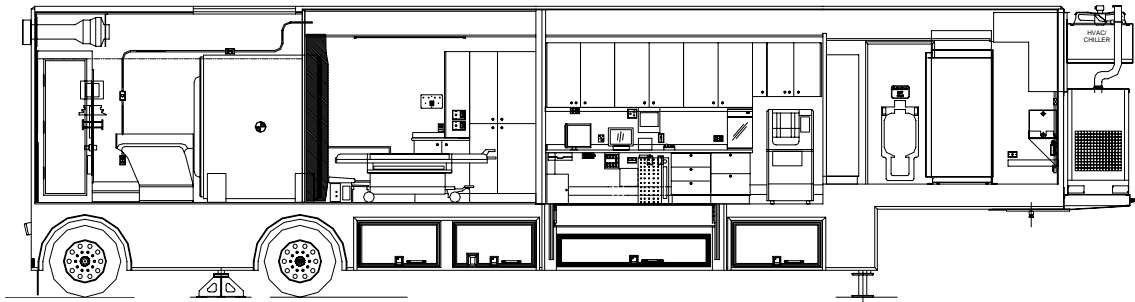




Operator and Service Manual

GE SIGNA HORIZON 1.0 & 1.5T Mobile MRI Systems 48' L x 8'-6" W x 13'-6" H USA Unit



© 2008 Oshkosh Specialty Vehicles, All Rights Reserved.

This manual contains confidential information of Oshkosh Specialty Vehicles. You may not copy this manual or any part of it without the written permission of Oshkosh Specialty Vehicles. This manual may be used only by you and only for the purposes for which it was intended. You may not disclose this manual or the confidential information it contains outside of your company. If you wish to copy part of this manual or to use it other than as it has been described above, you must contact Oshkosh Specialty Vehicles seeking permission to do so.

North America

Corporate Headquarters
Oshkosh Specialty Vehicles
16745 South Lathrop Ave.
Harvey, IL
60426
USA
(001) 708.596.5066

Europe

Oshkosh Specialty Vehicles, Ltd.
Unit 17, Nelson Way
Tuscum Trading Estate,
Camberley, Surrey
GU15 3DH
United Kingdom
(44) 01276.64490

Buys Ballotstraat 6
3261 LA Oud-Beijerland, Holland
+31 (0) 186-614322
Fax. +31 (0) 186-619367
E-mail: smit@smit-mobile.nl





List of Revisions & Warnings

Revisions

05	Added Ground Connection Clarification	January 2003
06	Added Platform Lift Safety Update and Information	August 2003
07	Added Power Cable Warning	October 2003
08	Added Hydraulic Platform Lift Warning	November 2003
09	Added Generator Vibration Isolation Warning	April 2004
10	Removed full support generator reference	February 2005
11	Updated Compartment Heater Info	July 2005
12	Updated Platform Lift Maintenance Information	Aug 2005
13	Patient to Platform	Aug 2006
14	Updated for Current Production Design	Sep 2006
15	Updated Logo & Company Reference	Oct 2006
16	Added Appendix H	Mar 2007
17	Updated Logo & Address	Dec 2008

Notice

In accordance with our policy of product development, Oshkosh Specialty Vehicles reserves the right to make changes in the equipment, design, specifications, and materials of the product described herein. If there are any inconsistencies between this manual and the mobile unit that inhibit serviceability, please contact Oshkosh Specialty Vehicles for assistance.

This manual is one of two (2) information documents provided in the mobile unit. The documentation package consists of:

Volume I – Site Guide, Service/Operators Manual, and associated drawings

Volume II – Vendor Information

These volumes should be kept in the mobile unit at all times.

Any problems or questions related to the components or systems covered in this manual may be directed to:

Oshkosh Specialty Vehicles
2150 E. Dolton Road
Calumet City, Illinois
60409
USA
(001) 800.839.0630 (24 hour service)
(001) 708.596.2480 (fax)

<http://www.oshkoshsv.com/>



Warnings & Safety Alert Conventions

The following terms define the various precautions and notices used in this manual:

NOTE:

Whenever information exists that requires additional emphasis beyond the standard textual information, the term “NOTE” is used.

IMPORTANT

Whenever information exists that requires special attention to procedures to ensure proper operation of the equipment or to prevent its possible failure, the term “IMPORTANT” is used.



Whenever potential damage to equipment exists, requiring correct procedures / practices for prevention, the term “CAUTION” is used.



Whenever potential personal injury or death situations exist, requiring correct procedures / practices for prevention, the term “WARNING” is used.



Whenever immediate hazards exist that could result in personal injury or death that cannot be eliminated by design safeguards, the term “DANGER” is used.



This safety alert symbol indicates important safety messages in the manual. When you see this symbol, carefully read the message that follows and be alert to the possibility of personal injury or death.



Electrical, mechanical, pneumatic, and hydraulic safety devices have been installed on this vehicle to help protect against personal injury and / or damage to equipment. Under no circumstances should any attempt be made to disconnect or in any way render any of these devices inoperative. If a malfunction of any safety device is discovered to exist, **DO NOT** operate the vehicle, but immediately notify appropriate maintenance personnel.

Oshkosh Specialty Vehicles shall have no liability with respect to: REPAIRS IMPROPERLY PERFORMED OR REPLACEMENTS IMPROPERLY INSTALLED (or) USE OF REPLACEMENT PARTS OR ACCESSORIES NOT CONFORMING TO Oshkosh SPECIALTY VEHICLE’S SPECIFICATIONS, WHICH ADVERSELY AFFECT PERFORMANCE OR DURABILITY (or) ALTERATIONS OR MODIFICATIONS NOT RECOMMENDED OR APPROVED IN WRITING BY OSHKOSH SPECIALTY VEHICLES (or) FOR EQUIPMENT DAMAGE OR PERSONAL INJURY OR DEATH AS A RESULT OF RENDERING ANY SAFETY DEVICE INOPERABLE.

Certain inherent risks are associated with heavy trailers due to the nature of their use. Personnel working in the area of these trailers are subject to certain hazards that cannot be met by mechanical means but only by the exercise of intelligence, care, and common sense. It is therefore essential for the owner of this equipment to have personnel involved in the use and operation of these trailers who are competent, careful, physically and mentally qualified, and trained in the safe operation of this equipment.



Table of Contents

List of Revisions & Warnings	3
Revisions	3
Notice	3
Warnings & Safety Alert Conventions	4
Section 1: Introduction	13
Section 2: Safety Guidelines	15
2.1 Operator's General Safety Precautions	16
2.2 Magnet Safety	16
2.3 Chemical Safety	16
2.4 Electrical Safety	17
2.5 Transportation Safety	18
Section 3: Mobile Unit Overview	19
3.1 Air Ride Control Valves	19
3.2 Canopy (optional)	20
3.3 Control Room Overall	21
3.4 Cryogen Compressor	22
3.5 Exterior Overall	23
3.6 Equipment Room Overall	24
3.7 Exterior Staff Entry Door	25
3.8 Fuel Compartment	26
3.9 Power Supply Control Panel	26
3.10 Glad-hand Connections	27
3.11 Hubbell All Weather Phone Cables	27
3.12 I.V. Track Rail	28
3.13 Levels	29
3.14 Magnet Room	30
3.15 Mobile Unit Controls	31
3.16 Phone & Data Line Connections	32
3.17 Scan Room Overall	33
3.18 Stabilizing Stands	34
3.19 Stair Assembly	35
3.20 Water / Wastewater Connections (Sink Option)	36
Section 4: Safety Systems	37
4.1 Door Interlock System	37
4.2 Emergency Exit / Service Door Equipment Room	38
4.3 Emergency Lighting	39
4.4 Fire Suppression (manual)	39
4.5 Fire Detection System (optional)	40
4.5.1 System Operation	41
4.5.2 Pull Station	41
4.5.3 Power Backup System	41
4.6 Fire Suppression System (optional)	42
4.6.1 System Operation	43
4.6.2 Pull Station	43
4.6.3 Manual Release	44



- 4.6.4 Abort Switch 44
- 4.6.5 Maintenance Switch 45
- 4.7 Gauss Lines 45
- 4.8 Hydraulic Platform Lift 46
- 4.9 Magnet Field Warning Indicator 46
- 4.10 Marker Lights 46
- 4.11 Roll Door 47
- 4.12 System Shutdowns 48
 - 4.12.1 Fire Detection System 49
 - 4.12.2 Fire Suppression System (optional) 49
 - 4.12.3 Guarded Magnet Quench Button (Emergency Rundown Unit) 50
 - 4.12.4 Manual Shutdown (Emergency Stop / A1 Stop) 50
- 4.13 Warning Lights 50
 - 4.13.1 Power ON Light 50
 - 4.13.2 Transport Warning Light 50

Section 5: Mobile Unit Setup Procedure 51

- 5.1 Park the Mobile Unit 51
- 5.2 Lower the Landing / Stabilizing Legs 51
- 5.3 Disconnect the Tractor 51
- 5.4 Install the Rear Stabilizing Stands 52
- 5.5 Re-level the Mobile nit 52
- 5.6 Disconnect the Tractor Air and Electrical Lines 52
- 5.7 Lower the Auxiliary Support Legs 52
- 5.8 Install the Stair Assembly 53
 - 5.8.1 Standard Stair Assembly 53
 - 5.8.2 Stair Assembly with the Platform (optional) 53
- 5.9 Hydraulic Platform Lift Deployment 54
- 5.10 Connect to Shore Power 54
- 5.11 Switch from Generator Power to Shore Power 55
- 5.12 Connect the Phone and Data Lines 55
- 5.13 Connect the Water / Waste Hoses 56
 - 5.13.1 Humidifier Water Fill 56
 - 5.13.2 Fresh Water Supply Requirements (Sink Option) 56
 - 5.13.3 Waste Water Connections (sink option) 56
- 5.14 Remove Restraining Hardware 57
- 5.15 Prepare the Medical System per OEM Instructions 57
- 5.16 Canopy Deployment (if applicable) 57

Section 6: Mobile Unit Transport Procedure 59

- 6.1 Canopy Retraction (if applicable) 59
- 6.2 Return the Hydraulic Platform Lift to the Transport Position 59
- 6.3 Secure all Equipment 60
- 6.4 Switch from Shore Power to Generator Power 60
- 6.5 Remove and Store the Stair Assembly 61
 - 6.5.1 Standard Stair System 61
 - 6.5.2 Stair Assembly with the Platform (Optional) 61
- 6.6 Remove the Shore Power Connection 62
- 6.7 Disconnect the Water / Waste Hoses 62
- 6.8 Disconnect Phone and Data Lines 62
- 6.9 Raise the Auxiliary Support Legs 63
- 6.10 Connect the Tractor Air and Electrical Lines 63



6.11	Remove the Rear Stabilizing Stands	63
6.12	Connect the Tractor to the Mobile Unit	64
6.13	Raise the Landing / Stabilizing Legs.....	64
6.14	Verify that the Mobile Unit is ready for Transport	65
Section 7: Electrical System.....		67
7.1	120/208V AC Electrical Panel	68
7.2	480V AC Electrical Panel	69
7.3	A1 Electrical Panel	69
7.4	Facility Power Connection	70
7.5	Power Cable	71
7.6	Special Grounding Note	72
Section 8: Generator		73
8.1	Generator Stop / Start Selector	75
8.2	Unit Power Selector Switch	75
8.3	480V AC FAULT Indicator Light	75
Section 9: HVAC System		77
9.1	Air Conditioning & Chiller.....	78
9.2	System Specifications and Descriptions	79
9.3	Exterior HVAC Specifications	79
9.4	HVAC Humidifier System	80
9.5	System Operation.....	81
9.6	Water Supply	81
9.7	Humidity Settings.....	82
9.8	Electrical Connections	82
9.9	Instructions	82
9.10	Interior HVAC Specifications.....	83
9.11	Underbody Compartment Heater.....	84
Section 10: Hydraulic Platform Lift.....		85
10.1	Safety Features.....	86
10.1.1	Transport Pins	86
10.1.2	Lift Controls.....	86
10.1.3	Handrails.....	87
10.1.4	Lift Up Indicator Light.....	87
10.1.5	Remote Control Pendant	87
10.1.6	Transport Warning Light	87
10.1.7	Transport Warning Strobe Light.....	88
10.1.8	Lift Transport Restraining Cable.....	88
10.2	Hydraulic System	88
10.2.1	Operation	88
10.3	Hydraulic Platform Lift Operation	89
10.3.1	Deploying the Hydraulic Platform Lift for use with the Mobile Unit.....	89
10.3.2	Storing the Hydraulic Platform Lift for Transport of the Mobile Unit	89
Section 11: Intrusion Alarm (optional).....		91
11.1	Operation	91
Section 12: Landing / Stabilizing Legs		93



12.1	Stabilizing Stands	94
12.2	Rear Air Suspension System Controls	94
Section 13: Lighting System		95
13.1	Emergency Lighting	95
13.2	Exterior Lighting	96
13.2.1	Underbody Compartment Lighting	96
13.2.2	Service Lighting	96
13.2.3	Staff Door Lighting	97
13.2.4	Scene Lighting	98
13.2.5	Marker & Running Lights	99
13.3	Interior Lighting	99
13.3.1	Equipment Room	99
13.3.2	Control Room	100
13.3.3	Scan Room	100
13.3.4	Magnet Room	101
13.4	Warning Lights	102
13.4.1	Power Warning Light	102
13.4.2	Transport Warning Light	102
13.4.3	Transport Warning Strobe Light	103
Section 14: General Maintenance		105
14.1	Daily Maintenance	105
14.2	Weekly Maintenance	106
14.3	Monthly Maintenance	106
14.4	Quarterly Maintenance	107
Section 15: Specific Maintenance		109
15.1	Door Closer Adjustments	109
15.2	Electrical System	110
15.3	Cryogen Compressor	110
15.4	Generator	110
15.5	Humidity System	110
15.6	HVAC System	111
15.7	Hydraulic Platform Lift	111
15.8	RF Shielding	112
15.9	Cryogen Gas Exhaust Fan	112
Appendix A: Mobile Unit Checklist		113
	Mobile Unit Setup Checklist	114
	Mobile Unit Transport Checklist	115
Appendix B: Troubleshooting		117
	Hydraulic Platform Lift is inoperable	117
	AC Power Indicator Light is off	117
	Transport Warning Light is on	117
	Suspension Transport Indicator Light is illuminated	118
	Humidity is out of specifications	118
	Temperature is out of specifications	120
Appendix C: HVAC Set Points		121



Appendix D: A-1 Circuit Malfunction Checklist 123
Category 1123
Category 2123

Appendix E: Lockout/Tagout Procedures 125
Specific Energy Control Procedures125
Machine or Equipment for this Procedure:125
Control of Hazardous Energy:125
Affected Personnel to notify when the Oshkosh Specialty Vehicles Trailer is to be Locked Out:
.....125
Shut down specifications for the Oshkosh Specialty Vehicle Trailers:126
Methods to dissipate energy:126
Method of Verifying the Isolation of the Machine or Equipment:126

Appendix F: Phantom Storage 127

Appendix G: Quarterly Maintenance Checklist..... 129

Appendix H: Cross Brace Installation 133
Introduction133
Requirements133
Installation Procedure.....134
Cross Brace Assembly-Front:134
Cross Brace Assembly-Rear:134
Removal Procedure.....134
Cross Brace Assembly Details:135





List of Figures

Figure 1: The GE Mobile MRI System	13
Figure 2: Air Ride Control Valves.....	19
Figure 3: Canopy.....	20
Figure 4: Control Room Overall	21
Figure 5: Oshkosh System ID Tag & Job Number.....	21
Figure 6: Cryogen Compressor.....	22
Figure 7: Exterior Overall	23
Figure 8: Equipment Room Overall.....	24
Figure 9: Exterior Staff Door	25
Figure 10: Fuel Compartment	26
Figure 11: Power Supply Control Panel.....	26
Figure 12: Glad Hand Connections.....	27
Figure 13: Hubbell All Weather Phone Cables	27
Figure 14: I.V. Track.....	28
Figure 15: Levels.....	29
Figure 16: Magnet Room Helium Gas Exhaust Fan	30
Figure 17 Mobile Unit Controls	31
Figure 18: Phone & Data Line Connections	32
Figure 19: Scan Room Overall.....	33
Figure 20: Stabilizing Stands	34
Figure 21: Stair Assembly (standard)	35
Figure 22: Fresh Water and Wastewater Connections.....	36
Figure 23: Interlocks.....	37
Figure 24: Emergency Exit / Service Door.....	38
Figure 25: Emergency Lighting	39
Figure 26: Fire Extinguisher	39
Figure 27: Smoke Detector	40
Figure 28: Fire Alarm Control Panel	40
Figure 29: Fire Alarm Pull Station	41
Figure 30: Fire Suppression Components	42
Figure 31: Abort Switch.....	44
Figure 32: Maintenance Switch.....	45
Figure 33: Roll Door Emergency Release	47
Figure 34: Emergency Shutdown Buttons	48
Figure 35: 120/208V AC Electrical Panel.....	68
Figure 36: 480V AC Electrical Panel.....	69
Figure 37: A1 Electrical Panel.....	69
Figure 38: Shore Power Connection.....	70
Figure 39: Power Cable	71
Figure 40: Power Supply Control Panel Ground Connection	72
Figure 41: Generator.....	74
Figure 42: A/C Unit.....	77
Figure 43: A/C / Chiller Control Panel.....	78
Figure 44: HVAC Monitor and Alarm Panel	79
Figure 45: Humidifier Water Tank	80
Figure 46: Humidifier External Water Connection	81
Figure 47: HVAC Components	83
Figure 48: Heater	84
Figure 49: Hydraulic Platform Lift.....	85
Figure 50: Retaining Cradles	86



Figure 51: Intrusion Alarm Keypad	91
Figure 52: Landing / Stabilizing Leg Assembly.....	93
Figure 53: Air Bag Controls	94
Figure 54: Emergency Dual Beam Lighting.....	95
Figure 55: Compartment Light.....	96
Figure 56: Drop Light.....	96
Figure 57: Staff Door Lighting.....	97
Figure 58: Scene Lights.....	98
Figure 59: Equipment Room Lighting.....	99
Figure 60: Control Room Lighting.....	100
Figure 61: Scan Room Lighting.....	100
Figure 62: Scan Room / Magnet Room Lighting and Switches.....	101
Figure 63: Warning Lights.....	102
Figure 64: Lift Transport Warning Strobe	103
Figure 65: RF Shielding.....	112
Figure 66: Phantom Storage	127
Figure 67:-Cross Brace Assembly-Rear-W/Short Assembly.....	135
Figure 68:-Cross Brace Assembly-Front	135
Figure 69:-Cross Brace-Shim (Typical)	136
Figure 70:-Cross Brace-Mounting Location.....	136
Figure 71:-Cross Brace Mounted to H frame RS wall	137
Figure 72:-Gap Shown.....	137
Figure 73:-Shim in place.....	137
Figure 74:-Cross Brace Assembly Mounted & Secured.....	138

Section 1: Introduction



WARNING

This manual is intended to instruct and assist personnel already qualified in the proper installation of the mobile unit. This manual is not intended to enable persons unfamiliar with the mobile unit to perform the setup and transport procedures.

This manual contains the basic information needed to setup, transport, and service the mobile unit. This mobile unit was designed to operate within certain limitations and specifications. When performing the setup or transport procedures for the mobile unit, follow the proper logical steps that have been outlined in this manual. The drawings in this manual are representative of this product. In accordance with our program of continued product development, and in compliance with the GEMS VCR program, designs and specifications are subject to change without notice.



Figure 1: The GE Mobile MRI System



As part of Oshkosh Specialty Vehicles' on-going program to improve its products and service, (and their effectiveness in enhancing safety, reliability, performance, productivity, and the useful service life of the equipment) Oshkosh Specialty Vehicles reserves the right to implement product changes and disseminate changes in design and service information without notice or recourse.

For questions regarding the Operation or Service of this unit call Oshkosh Specialty Vehicles at 800-839-0630.



Section 2: Safety Guidelines



Electrical, mechanical, pneumatic, and hydraulic safety devices have been installed on this vehicle to help protect against personal injury and / or damage to equipment. Under no circumstances should any attempt be made to disconnect or in any way render any of these devices inoperative. If a malfunction of any safety device is discovered to exist, DO NOT operate the vehicle, but immediately notify appropriate maintenance personnel.



Use and follow the appropriate Lockout/Tagout procedures as required by OSHA Standard 1910.147 when performing maintenance or servicing any electrical, hydraulic or pneumatic systems. See Appendix E for Lockout/Tagout procedures.



It is the operator's responsibility to verify that the shore power receptacle is of the same type and voltage as the connection that is supplied by Oshkosh Specialty Vehicles. Failure to do this can result in injury or death to the operator of the mobile unit as well as irreparable damage to the mobile unit.



Make sure that all electrical parts are serviced only by a certified electrician or qualified personnel. Dangerous voltages are present which could result in injury or death.



Always make sure that eyes are protected while servicing the unit. Wear safety goggles when prying, drilling, grinding, or working with batteries. Wear safety goggles over regular prescription glasses unless the lenses are made of hardened glass and can serve as safety goggles.



Be certain to disconnect the power before working on any of the electrical systems.



When servicing the unit be certain that a first aid kit and fire extinguisher are within reach at all times.

This safety section contains important information in regards to general safety guidelines that should be followed. Before attempting to service the mobile unit, read this safety section as well as all other safety sections found in applicable manufacturers' manuals in the VOL II Vendor Information binder.



2.1 Operator's General Safety Precautions

Your safety and the safety of other persons in the area of this vehicle are the result of your correct operation of this vehicle. Know the location, positions, and functions of all the controls. Know the meaning of the various Warning, Caution, Strobe, and Annunciator lights and their associated audible warning sounds.

Read this manual completely and make sure you understand the contents. Make sure you understand, for example, the characteristics of speed, stability, brakes, and steering, etc. of this vehicle. If you have any questions, contact Oshkosh Specialty Vehicles, (800) 839-0630. Always keep a copy of this manual with the vehicle.

The safety information in the manual does not replace any other rules or laws for safety that are used in your area, Know the local rules or laws for safety. Make sure that your vehicle has the correct equipment to operate according to these rules or laws.

All safety hazards that can possibly arise cannot be foreseen and noted in this manual. You must UalwaysU use common sense and apply the general as well as the specific safety precautions.

Make sure the work area is well ventilated.

Disconnect the electrical power to prevent the possibility of electrical shock when servicing all electrical equipment.

Follow all manufacturers' directions and request material data sheets where applicable.

Always keep tools clean and free of grease.

Do not stand on chairs inside of the mobile unit under any circumstances.

Follow all safety precautions found in the documentation package that is included with the mobile unit.

2.2 Magnet Safety

A magnetic shielding system has been installed on each sidewall opposite of the magnet, and on the rear wall of the mobile unit. The magnetic shielding system is extremely effective, and designed to meet or exceed the Mobile MRI site plan requirements of the medical equipment manufacturer. This system is proprietary.

All personnel with pacemakers, metal implants and neurostimulators should avoid entering the exclusion zone of the magnetic field. The medical equipment manufacturer defines the exclusion zone of the magnetic field.

Do not bring ferrous materials into the exclusion zone. These items may become projectiles and cause serious injury, and / or property damage.

Watches can be damaged and credit cards can be erased if brought into the exclusion zone.

2.3 Chemical Safety

When working in the presence of liquid helium, make sure the work area is well ventilated.

Inhalation of helium or nitrogen can cause rapid suffocation. If any personnel inhale gas, quickly move them to fresh air and seek medical attention at once.

The gases used in mobile MRI units to cool the magnet can cause severe frostbite. If frostbite occurs, seek medical attention at once.

Liquid or gas can freeze air inside of vent lines. Check periodically to be certain that the vent screen is open.



2.4 Electrical Safety



Use and follow the appropriate Lockout/Tagout procedures as required by OSHA Standard 1910.147 when performing maintenance or servicing any electrical, hydraulic or pneumatic systems. See Appendix E for Lockout/Tagout procedures.



Before connecting or disconnecting from shore power, it is imperative that the shore power connections be moved to the "OFF" position. Failure to do this can result in injury or death to the operator of the mobile unit.



It is the operator's responsibility to verify that the shore power receptacle is of the same type and voltage as the connection that is supplied by Oshkosh Specialty Vehicles. Failure to do this can result in injury or death to the operator of the mobile unit as well as irreparable damage to the mobile unit.



Always inspect the power cable, connectors, and fasteners prior to usage. If during inspection, it is suspected that either internal or external damage has occurred, have a certified electrician inspect and repair the damage before using.



The Power Cable could present a trip hazard that could result in personal injury. Care should be taken to ensure that the cable is routed properly to minimize its potential as a trip hazard.

When working with the electrical system for the mobile unit. Follow the warnings and cautions listed above.



2.5 Transportation Safety

Walk around the unit to make certain that all doors are closed and locked and that the hydraulic platform lift is seated in the retaining cradles.

Make certain the hydraulic platform lift is seated in the retaining cradles, the transport pins are in place, and the Lift Transport Restraining Cable is in place and securely connected.

If any of the warning lights are illuminated or strobe lights are flashing, do not move the mobile unit.



If the Transport Warning Light is on, the mobile unit must not be moved. If the mobile unit is moved while this light is on, irreparable damage to the mobile unit, serious injury or death can occur.



If the Transport Warning Strobe Light is flashing the mobile unit must not be moved. If the mobile unit is moved while this light is flashing, irreparable damage to the mobile unit, serious personal injury or death can occur.

Before moving the mobile unit, verify that all marker and running lights are working properly. It is the Operator's responsibility to ensure that the marker and running lights functioning properly and that the bulb elements are in working order. Please refer to the Oshkosh Specialty Vehicles VOL II Vendor Information binder for the product manual, the Oshkosh Specialty Vehicles VOL I Service/Operation Manual binder for a list of local service representatives, or contact Oshkosh Specialty Vehicles for service.

Consult with the local DMV to determine if there are any travel restrictions or routes.

Section 3: Mobile Unit Overview

The components of the mobile unit have been divided into alphabetical order. With each component a picture and description will be found to better illustrate the components of the mobile unit. Additional components of the mobile unit can be found within the remaining chapters.

3.1 Air Ride Control Valves



The air ride control valves must be in the normal ride position before the mobile unit can be transported. If the air ride control valves are not in the normal ride position, irreparable damage may occur to the mobile unit.

The air ride control valves adjust the rear air suspension bags. When the mobile unit is being transported, the air ride control valves must be in the normal ride position.



Figure 2: Air Ride Control Valves



3.2 Canopy (optional)

This retractable canopy is positioned above the platform lift to provide shelter from the elements. The handle used to deploy the unit is neatly stowed in Equipment Room during transit.



Figure 3: Canopy

3.3 Control Room Overall

Control Room houses the controls for the technician. The internal environment of the mobile unit can be monitored from Control Room.



Figure 4: Control Room Overall



Figure 5: Oshkosh System ID Tag & Job Number



3.4 Cryogen Compressor

The cryogen compressor is supplied by GE. For information regarding the cryogen compressor, please refer to the manuals supplied by GE.



Figure 6: Cryogen Compressor

3.5 Exterior Overall

In these pictures the hydraulic platform lift, the staff entry door, the generator housing, the HVAC unit and the emergency exit / service entry door to Equipment Room can be seen.



Right Side



Left Side

Figure 7: Exterior Overall



3.6 Equipment Room Overall

Equipment Room houses the system components that support the medical system, such as the humidifier and water tank, and the main electrical panels.



Figure 8: Equipment Room Overall

3.7 Exterior Staff Entry Door

A 44" inch wide, high quality, positive latching, double gasket, insulated main entry door with door closer and tinted glass window is installed on the mobile unit. The door is fitted with hospital grade emergency exit bar and an adjustable privacy blind on the window.



Figure 9: Exterior Staff Door



3.8 Fuel Compartment

The fuel compartment stores the fuel tank, fuel gauge, fuel pump, and fuel separator.



Figure 10: Fuel Compartment

- Fuel Gauge: The fuel gauge is push button activated and will give an accurate reading of the available fuel supply.
- Fuel Pump: The fuel pump pumps the fuel from the fuel tank to the generator.
- Fuel Separator: The fuel separator removes debris from the fuel supply.
- Fuel Tank: The fuel tank stores and supplies fuel to the generator. The capacity of the fuel tank is 70 US gallons. Only use diesel fuel.

3.9 Power Supply Control Panel

The generator control panel provides the controls to start and stop the generator and to switch from generator power to shore power and back to shore power when required.



Figure 11: Power Supply Control Panel

3.10 Glad-hand Connections

The glad hands are the connection point between the tractor and the mobile unit. All connections must be made before moving the mobile unit. Failure to make all connections can result in damage to the mobile unit.



Figure 12: Glad Hand Connections

Emergency Airline:	Provides air to the parking brake and suspension system.
Key Lock Box: (Forward left side, not shown)	A combination lock that holds a key to the mobile unit.
Service Airline:	Supplies air to the trailer service brakes.
Standard Electrical Service:	The main electrical connection for the mobile unit.

3.11 Hubbell All Weather Phone Cables

Hubbell all weather phone cables are required for use with the Hubbell all weather phone connections.



Figure 13: Hubbell All Weather Phone Cables



3.12 I.V. Track Rail

A ceiling mounted I.V. track rail has been installed in Scan Room.



Figure 14: I.V. Track

3.13 Levels

The levels allow the mobile unit to be leveled both front to back and side to side. It is imperative that the unit be leveled prior to use.



Bubble Levels

Figure 15: Levels



3.14 Magnet Room

The Magnet Room is located at the rear of the magnet and is accessible from the rear service entrance door. This room is provided as a service area at the rear of the magnet. Within the magnet room is an exhaust fan system that is used to remove cryogen gas from the unit in the unlikely event of a magnet quench or cryogen gas leak.



Figure 16: Magnet Room Helium Gas Exhaust Fan

3.15 Mobile Unit Controls

Located inside of the mobile unit are the various controls that are used for operating such items as the interior and exterior lights, the hydraulic platform lift, warning lights, emergency stop buttons, fire alarms, and emergency equipment.



Scan Room and Magnet Room Lighting



Control Room and Equipment Room Lighting and E-Stop Controls



Roll Door Controls and Platform lift "UP" light



HVAC Monitor & Alarm

Figure 17 Mobile Unit Controls

- | | |
|------------------------------------|--|
| Control Room Light Switches: | ON / OFF light switch for Control Room and Equipment Room fluorescent lights. |
| Control Room Halogen Lights: | ON / OFF light dimmer-switch for the halogen lighting. |
| Exterior Light Switch: | ON / OFF light switch for the exterior lights. |
| MRI Emergency OFF Button (E-Stop): | The emergency stop button for the MRI system will stop all medical components. This will not stop the HVAC system. This is also commonly referred to as the A-1 Stop Button. |
| Roll Door Controls: | Controls the movement of the roll door. |
| Platform lift Warning Light: | Notifies the operator of the hydraulic platform lift position status. |
| Scan Room Light Switches: | ON / OFF light switch for Scan Room and Magnet Room. |



3.16 Phone & Data Line Connections

The phone and data connections are located in the underbody compartments. The connections are used to connect the mobile unit to the shore facility. The telephone connections utilize a Hubbell all weather connection, while the data lines utilize an RJ-45 connection and CAT-5E cabling.



Figure 18: Phone & Data Line Connections

Hubbell All Weather Phone Connections

The Hubbell all weather phone connections are to be used with the provided Hubbell all weather telephone cable.

Data Connections

The data connections that are utilized are RJ-45's. The connections utilize CAT-5E cable and can be connected directly to the facility

3.17 Scan Room Overall

Scan Room houses the medical equipment system. Also located in this room are storage compartments for the medical equipment. Placed alongside the storage compartments the magnet quench button can be found. In the Magnet Room the emergency shutdown button can be found.



Figure 19: Scan Room Overall



3.18 Stabilizing Stands

The stabilizing stands are placed underneath the rear of the mobile unit when the medical system is in use. These stands help to level the mobile unit and decrease vibration, which can affect scan quality.



Figure 20: Stabilizing Stands

3.19 Stair Assembly

The stairs allow access to the interior of the mobile unit through the staff door. When assembling the stairs, please refer to the following illustrations.



Figure 21: Stair Assembly (standard)



3.20 Water / Wastewater Connections (Sink Option)

The fresh water and wastewater connections are located on the left side of the mobile unit. Please refer to the following illustration.

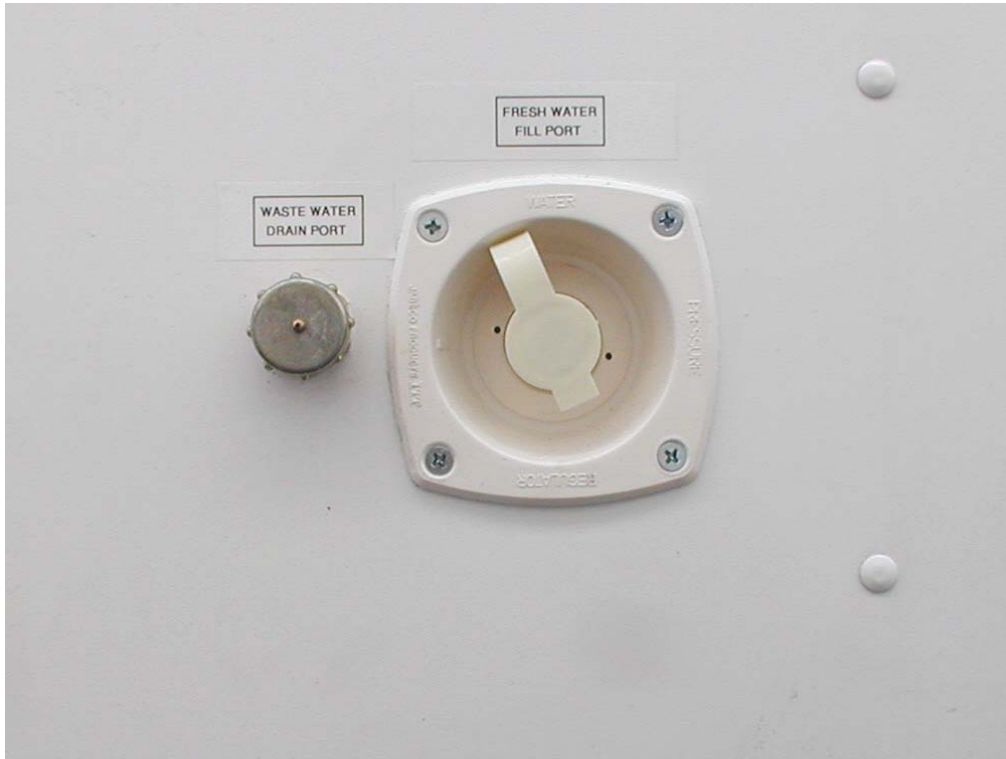


Figure 22: Fresh Water and Wastewater Connections

Section 4: Safety Systems

This safety section contains important information about the safety systems that have been built into the mobile unit to protect all personnel and equipment. Before attempting to service the mobile unit, read this safety section as well as all other safety sections found in applicable manufacturers' manuals in the VOL II Vendor Information binder.



[Figure 23: Interlocks](#)

4.1 Door Interlock System

Scan Room and Magnet Room are shielded from radio frequency interference. If doors that lead to these rooms are opened, radio frequencies can interfere with the scan image. A door interlock system has been incorporated into the mobile unit to ensure that proper scanning can take place. This system provides a constant monitoring of the doors that have the interlock system. If one of these doors is opened, the technician will see a notification appear at the console stating that an RF door has been opened. All doors must be closed for scanning to take place. If a door is opened during a scan, scanning operations will be stopped. The door interlocks can be found at the following locations.

On the interior door that leads into Scan Room.

On the exterior door that leads into Magnet Room.



4.2 Emergency Exit / Service Door Equipment Room

An emergency exit / service door has been installed on the street sidewall of the mobile unit. In the event of an emergency, this door can be used as an exit. When needed, this door can also be used when servicing the mobile unit.



Figure 24: Emergency Exit / Service Door

4.3 Emergency Lighting

In the event that the main AC power fails, a dual beam emergency light is provided. This light will automatically illuminate when the main AC power is lost. It is located in the Control Room. The emergency lighting system is wired into a 120V AC electrical system that allows the light's internal circuitry to keep its batteries at 100% charge. The emergency light will illuminate the exit door and last for approximately 90 minutes. Refer to [Figure 25: Emergency Lighting](#).



[Figure 25: Emergency Lighting](#)

4.4 Fire Suppression (manual)

Two fire extinguishers are supplied with the mobile unit. They are located in Control Room and Equipment Room. Instructions for operation are clearly printed on the canister of the fire extinguisher. The fire extinguisher meets the following standards.

It is a class A/B/C 1211 hand held unit.

It has a charged weight of 2 lbs., 8 oz.

It is U.L. listed.

It meets D.O.T. requirements.

It is in accordance with N.F.P.A. Standard No. 10, "Portable Fire Extinguisher".



[Figure 26: Fire Extinguisher](#)



4.5 Fire Detection System (optional)

The fire alarm control panel is responsible for monitoring the fire alarm system. Located on the interior of the fire control panel is a brief list of instructions that explain how to use the system control buttons to test, reset, and silence the alarm. Please refer to the product manual located in Volume II of the literature provided by Oshkosh Specialty Vehicles.

A standard fire detection system is installed in the mobile unit.

The fire detection system works via photoelectric smoke detectors located on the ceiling panels in each room of the mobile unit. In the event of a fire being detected, a horn will sound and a strobe light will flash.

The smoke detector is responsible for detecting smoke for use with both the standard fire alarm system as well as the optional fire suppression system.



Figure 27: Smoke Detector



Figure 28: Fire Alarm Control Panel

- Reset Button: The reset button resets the system after it has been activated
- Trouble Silence Button: The trouble silence button will silence the horns that are activated after the alarm has been tripped.
- Disable Button: The disable button will shut the alarm system down for maintenance.

4.5.1 System Operation

During normal operation, the control unit remains in a supervisory mode. If one smoke detector goes into alarm, it will trigger the following actions.

The fire horn will sound continuously.

A (RED) alarm LED located on the front cover of the fire system control panel will illuminate.

The strobe light will flash.

The HVAC units will shutdown.

4.5.2 Pull Station

A pull station is located next to the staff door in the Control Room. When the pull station has been pulled, the steps outlined above will occur.



Figure 29: Fire Alarm Pull Station

4.5.3 Power Backup System

Primary 120V AC power to the fire system control panel is supplied from the 480V AC service panel. When the primary power is lost, on-line emergency batteries built into the system will provide 24 hours of supervisory power.

When primary power is lost, both the green "POWER" LED and the yellow "TROUBLE" LED will flash.

The "SYSTEM TROUBLE" and "POWER TROUBLE" LED's will also begin to illuminate.

The audible alert located inside of the system control panel will begin to BEEP.

The emergency batteries are rechargeable gel celled. They are also float charged to provide quick recovery after primary power is restored.



4.6 Fire Suppression System (optional)

An optional fire suppression system is available for the mobile unit. This fire suppression system uses a dispersant to extinguish the fire. The dispersant used is a gas that removes the oxygen from the interior of the mobile unit. Without oxygen, the fire cannot survive. This method provides the means to allow both personnel and property to escape the damage from the fire virtually unharmed. When the fire suppression system has been triggered, it will automatically shut down the medical system, and the HVAC system.

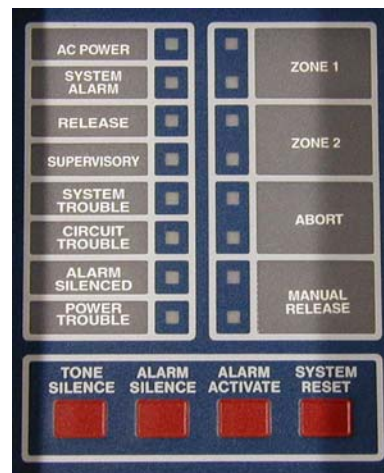


Figure 30: Fire Suppression Components



4.6.1 System Operation

During normal operation, the fire suppression system control panel remains in a supervisory mode. In order for the fire suppression system to discharge the dispersant, a number of events must first occur. When these events begin to occur, the fire suppression system control panel enters into what is called a "counting mode".

If one smoke detector goes into alarm, the following steps will occur.

The bell will sound continuously.

The red LED marked "Zone 1" or "Zone 2" located on the front cover of the fire suppression system control panel will illuminate.

The HVAC system will shutdown.

The roll door will close (if applicable).

The "System Alarm" LED will illuminate.

If no other smoke detector goes into alarm, the fire system control panel will remain in alarm condition until the control panel is manually reset. To reset the control panel, open the front cover, and depress the system reset button.

If a second smoke detector goes into alarm, the following steps will occur in addition to the previously mentioned steps.

Both red LED's marked "Zone 1" and "Zone 2" located on the front cover of the fire suppression system control panel will now be illuminated.

The horn will pulse (on-off-on-off, etc.).

The bell will silence.

The strobe light will begin to flash.

A 30 second time delay will begin.

After 30 seconds have passed, the dispersant will be discharged. (Total discharge time is normally less than 10 seconds.)

The LED marked "RELEASE" located on the front cover of the fire suppression system control panel will illuminate.

The horn will sound continuously indicating that the dispersant is being discharged.

The medical system will shutdown.

The rear service exhaust fan will shutdown.

The fire remote contacts located in the remote box in the underbody compartment will state.

4.6.2 Pull Station

A pull station is located next to the staff door in the Control Room. When this pull station is activated, the system discharges immediately.



4.6.3 Manual Release

In the event that the control panel is not receiving power, a manual release has been provided on the dispersant tank. To activate, pull the safety pin, and then pull the release flap. If the above steps have been performed, all personnel must vacate the mobile unit as soon as possible.

4.6.4 Abort Switch



The abort switch will not stop the dispersant from discharging indefinitely. The abort switch only postpones the discharge, by resetting the 30-second counter. All personnel must be out of the unit before the dispersant is discharged.

An abort switch is located next to the staff door in the Control Room. When this switch has been activated, the 30-second timer will be reset.

The system will stay in the reset mode as long as the reset switch is held in position.

Once the reset switch has been released, the timer will resume the countdown starting at 10 seconds.

If for some reason the dispersant must be shortly postponed from discharging, use the abort switch.



Figure 31: Abort Switch

4.6.5 Maintenance Switch

IMPORTANT

After all service work has been completed on the mobile unit, all smoke must be cleared from the mobile unit before arming the system.

IMPORTANT

If the key switch is in the active position and the red LED is illuminated, a trouble condition exists somewhere in the system. Refer to the system control panel for information.

When the maintenance switch is in the active position, the green LED will be illuminated signifying all systems are armed and functioning correctly.

When the maintenance switch is in the inactive position, the red LED will illuminate signifying that the system is unarmed. At this time, maintenance can be performed on the mobile unit as required.



Figure 32: Maintenance Switch

4.7 Gauss Lines

WARNING

The magnetic field created when the magnet is up to full field attracts objects containing iron, steel, nickel, and cobalt. Such objects must not be brought into the exclusion zone area. Large objects will not be able to be restrained. Persons with implants or prosthetic devices must not enter this area. Pacemakers may be disabled. Data on credit cards and magnetic storage media can be erased. Watches, cameras, and instruments can be damaged.

IMPORTANT

The exclusion zone is restricted to within 6" of the outside walls of the trailer.

A magnet produces magnetic fields. The measured intensity of these fields, at specified distances from the magnet, are referred to as gauss lines.

Any stationary or moving ferrous objects within the magnetic field have a definite impact on the homogeneity of the magnetic field.

The magnetic field also has a definite impact on any ferrous material that enters it.



4.8 Hydraulic Platform Lift

There are multiple safety features for the hydraulic platform lift. For a full list of the safety features, please refer to [Section 10: Hydraulic Platform Lift](#).

4.9 Magnet Field Warning Indicator



The magnetic field created when the magnet is up to full field attracts objects containing ferrous materials (i.e. iron, steel, nickel, cobalt, etc.). Such objects must not be brought into the exclusion zone area. Large objects will not be able to be restrained. Persons with implants or prosthetic devices must not enter this area. Pacemakers may be disabled. Data on credit cards and magnetic storage media can be erased. Watches, cameras, and instruments can be damaged.

Because of certain precautions that are need to be taken when nearing a magnet, a magnet field warning system has been incorporated into the unit. A decal stating Magnet ON has been placed on the frame of the entry door to Scan Room in order to alert all personnel nearing the room. An optional light can be provided. The light is labeled Magnet ON and is located next to the entry door to Scan Room.

4.10 Marker Lights

L.E.D. type marker and side turn signal lights are installed on the trailer body to assist the driver with maneuvering the mobile unit.

4.11 Roll Door

Controls for the roll door are located both inside and outside of the mobile unit. On the exterior of the mobile unit, the controls can be found alongside the controls for the hydraulic platform lift. On the interior, the controls can be found next to the staff door. A green indicator light is located next to the controls and will illuminate when the hydraulic platform lift is in the raised position and the door can be safely opened.

In the event the power supply is lost, the mobile unit has been provided with a manual override (emergency release) for the roll door. Once the disconnect lever is pulled, the roll door can be moved manually either up or down.



Figure 33: Roll Door Emergency Release



4.12 System Shutdowns

There are different types of shutdowns that can take place on the mobile unit. Of the different types, both manual and automatic shutdowns exist. All shutdowns refer only to the medical system and not the HVAC system unless otherwise noted.



Guarded Magnet Quench Button, Scan Room



Emergency Off Button, Magnet Room



Emergency Off button, Control Room, next to Entry Door



A1 Start/Stop in Equipment Room

Figure 34: Emergency Shutdown Buttons



4.12.1 Fire Detection System

When smoke is detected, the fire detection control panel will trigger the following events.

The fire horn will sound continuously.

The strobe light will flash.

The HVAC units will shutdown.

4.12.2 Fire Suppression System (optional)

If one smoke detector goes into alarm, the following steps will occur.

The bell will sound continuously.

The red LED marked "Zone 1" or "Zone 2" located on the front cover of the fire suppression system control panel will illuminate.

The HVAC system will shutdown.

The roll door will close (if applicable).

The "System Alarm" LED will illuminate.

If no other smoke detector goes into alarm, the fire system control panel will remain in alarm condition until the control panel is manually reset. To reset the control panel, open the front cover, and depress the system reset button.

If a second smoke detector goes into alarm, the following steps will occur in addition to the previously mentioned steps.

Both red LED's marked "Zone 1" and "Zone 2" located on the front cover of the fire suppression system control panel will now be illuminated.

The horn will pulse (on-off-on-off, etc.).

The bell will silence.

The strobe light will begin to flash.

A 30 second time delay will begin.

After 30 seconds have passed, the dispersant will be discharged. (Total discharge time is normally less than 10 seconds.)

The LED marked "RELEASE" located on the front cover of the fire suppression system control panel will illuminate.

The horn will sound continuously indicating that the dispersant is being discharged.

The medical system will shutdown.

The rear service exhaust fan will shutdown.

The fire remote contacts located in the remote box in the underbody compartment will state.



4.12.3 Guarded Magnet Quench Button (Emergency Rundown Unit)

This WILL drop the magnet. Depressing the Quench Button will rapidly deplete the magnetic field. The magnet located inside of Scan Room is cooled by liquid helium. When the magnet quench button is depressed, the helium will be quenched from the magnet. This must only be done when there is an emergency related to the magnetic field.

Once this button has been depressed, the helium will be quenched and the MRI System must be serviced before it can be used again.

The guard must be lifted before the button can be depressed. Once the button has been depressed, the magnet will begin quenching while all the other systems continue to work normally.

4.12.4 Manual Shutdown (Emergency Stop / A1 Stop)

This WILL NOT drop the magnet. Depressing the Quench Button, only, will rapidly deplete the magnetic field. Depressing the E-Stops or A1 Stop buttons will not deplete the magnetic field. Manual shutdowns are those that require the operating personnel to depress "Emergency OFF" buttons in the event of an emergency. The "Emergency OFF" buttons are located in Control Room and Magnet Room aboard the mobile unit. When these buttons are depressed, only the medical system will be shutdown. The trailer systems will still be operational.

4.13 Warning Lights

Warning lights have been provided to keep the operator and technician aware of the status of the mobile unit at all times. A description of each of the warning lights and their location can be found below. If any of the warning lights are illuminated, please refer to [Appendix B: Troubleshooting](#), for additional information.

4.13.1 Power ON Light

The "Amber" Power ON Light is located on the exterior left side of the mobile unit and will illuminate when the mobile unit is receiving power. The mobile unit must have power at all times.

4.13.2 Transport Warning Light



If the Transport Warning Light is on, the mobile unit must not be moved. If the mobile unit is moved while this light is on, irreparable damage can occur to the mobile unit.

The Transport Warning Light is located on the exterior left side of the mobile unit and will illuminate when the hydraulic platform lift is not in the proper transport position.

Section 5: Mobile Unit Setup Procedure



The GE medical system requires the HVAC system to be supplied power at all times when the unit is in the parked position via shore power.



The landing / stabilizing legs and rear suspension are not to be used to raise the mobile unit off the ground. The legs are meant only to level the unit and place it in a parked position. If the legs are used in an attempt to raise the mobile unit from the ground, serious damage may occur to the mobile unit.



A checklist can be found in Appendix A that may be used as a guideline for the following procedure.

5.1 Park the Mobile Unit

In order to join the mobile unit to the facility, place the unit on the pad per the site-planning guide.

5.2 Lower the Landing / Stabilizing Legs

After the mobile unit has been parked on the pad per the site-planning guide, the landing / stabilizing legs must be lowered to stabilize the mobile unit before it can be used. Refer to [Figure 52: Landing / Stabilizing Leg Assembly](#) for the following procedure.

1. Move and hold the pump switch in the “Pump ON” position.
2. Pull the levers towards you to extend the landing / stabilizing legs to their extended position.
3. Extend the legs far until the front of the unit has been raised high enough to clear the fifth wheel.
4. Release the pump switch. The switch should automatically return to the “Pump OFF” position.

5.3 Disconnect the Tractor

After the landing / stabilizing legs have been lowered, the tractor must be removed from the mobile unit.

1. Verify that the mobile unit has been raised high enough to clear the fifth wheel.
2. Leave the air and electrical lines attached and disconnect the tractor from the mobile unit.



5.4 Install the Rear Stabilizing Stands

After the front landing / stabilizing legs have been lowered into position and the tractor has been disconnected from the mobile unit, the rear stabilizing stands can be installed. The rear stabilizing stands must be installed prior to use of the medical system. Refer to [Figure 2: Air Ride Control Valves](#) and [Figure 20: Stabilizing Stands](#) for the following procedure.

1. Open the left side rear underbody compartment door to gain access to the air ride controls.
2. To raise the unit, turn the switch "ON" and place the lever in the "UP" position.
3. Raise the mobile unit high enough to insert the stabilizing stands. Move the switch to the "OFF" position.
4. Install the stands under the stand supports.
5. After the stands have been installed, turn the switch "ON" and place the lever in the "DOWN" position to deflate the air bags.
6. Completely lower the mobile unit until the supports are resting on the stabilizing stands.
7. Verify that the unit is level by checking the levels.

5.5 Re-level the Mobile nit

After the preceding steps have been completed, the mobile unit may no longer be level. Re-level the unit if necessary using the levels that have been provided. Refer to [Figure 15: Levels](#) if needed. Set the trailer brakes.

5.6 Disconnect the Tractor Air and Electrical Lines



Failure to completely exhaust the suspension before uncoupling the air lines may result in damage to the suspension of the mobile unit.

After the mobile unit has been re-leveled, the tractor air and electrical lines can safely be removed. Refer to [Figure 12: Glad Hand Connections](#).

5.7 Lower the Auxiliary Support Legs

After the preceding steps have taken place, the auxiliary support legs can now be lowered. Refer to [Figure 52: Landing / Stabilizing Leg Assembly](#) for the following procedure.

1. Remove the pin that is currently holding the safety leg in the transport position.
2. Lower the auxiliary support leg to within ½" of the sand shoe and insert the pin into the highest available hole to lock the leg in position.



5.8 Install the Stair Assembly

There are two different options for the stair assembly. The first option is to attach the stairs directly to the mobile unit while the second option is to utilize the supplied platform as well. Although not specifically required, both options can be set up easier with two people. The instructions are covered below. Please refer to [Figure 21: Stair Assembly \(standard\)](#) and follow the appropriate set of instructions for your unit.

5.8.1 Standard Stair Assembly

1. Remove the stair assembly from the underbody compartments.
2. Close the door to the underbody compartment.
3. Install the clip of the stair assembly into the channel located underneath the staff door.
4. Adjust the height of the stair legs as necessary to in order to level and secure the stairs.
5. Install the handrail into its operating position and secure in place with the hardware provided.

5.8.2 Stair Assembly with the Platform (optional)

1. Remove the stair assembly from the underbody compartments.
2. Having one person on each side of the platform, lift the platform and place the clip of the platform in the channel located beneath the staff entry door.
3. While one person holds the platform in place, the other person should insert the adjustable legs into position to support the platform.
4. Adjust the legs as necessary in order to ensure the platform is both level and secure.
5. After the platform has been supported, the slip of the stair assembly can be safely placed into the channel located on the platform.
6. Insert the adjustable legs for the stair assembly at the base of the stairs.
7. Adjust the legs as necessary in order to ensure the stair assembly is both level and secure.
8. Place the handrails in their operating positions and secure them with the hardware provided.
9. Close the door to the underbody compartment.



5.9 Hydraulic Platform Lift Deployment

After the stair assembly has been installed, the hydraulic platform lift can be deployed for use. Please refer to [Section 10: Hydraulic Platform Lift](#) for the following procedure.

1. Open the underbody compartment doors.
2. Remove the handrails and lift pendent, and place them to the side for now.
3. Close the underbody compartment door.
4. Located next to the roll door, are the controls for the hydraulic platform lift. Insert the connector from the lift control pendent into the receptacle that is located on this control panel.
5. Remove the Lift Transport Restraining cable.
6. Remove the transport pins from each side of the lift.
7. Raise the lift high enough to clear the cradles, using the remote.
8. Carefully pull down the platform until it is parallel with the ground. A torsion bar is located within the hydraulic platform lift hardware that will enable one person to move the lift into operating position.
9. Lower the platform to the ground, using the lift control pendent.
10. Once the platform has been lowered, install the handrails and secure them with the hardware provided.

5.10 Connect to Shore Power



Before connecting or disconnecting from shore power, it is imperative that the shore power connections be moved to the "OFF" position. Failure to do this can result in injury or death to the operator of the mobile unit.



It is the operator's responsibility to verify that the shore power receptacle is of the same type and voltage as the connection that is supplied by Oshkosh Specialty Vehicles. Failure to do this can result in injury or death to the operator of the mobile unit as well as irreparable damage to the mobile unit.



Always inspect the power cable, connectors, and fasteners prior to usage. If during inspection, it is suspected that either internal or external damage has occurred, have a certified electrician inspect and repair the damage before using.

NOTE: The unit must first be switched to shore power before the medical system can be used. Refer to [Figure 38: Shore Power Connection](#), for the following procedure.

1. Verify that the shore power disconnect is in the "OFF" position.
2. Open the underbody compartment door and remove the power cable from the underbody compartments of the mobile unit.
3. Insert the trailer connector into the shore power receptacle and spin the lock ring clockwise to secure the connection.
4. Move the shore power disconnect to the "ON" position.
5. Close the underbody compartment door; making sure that the access flap for the power cable has been released.

5.11 Switch from Generator Power to Shore Power



When switching from generator power to shore power the “480V AC FAULT” may illuminate and flicker. If the “480V AC FAULT” stays illuminated, reconnect to generator power and call a certified electrician before attempting to reconnect to shore power.



When turning the power selector switch for the incoming power, from one position to another, the selector must be paused for a minimum of five seconds, in the “OFF” position between selections. Failure to do so can result in damage to the equipment.

NOTE: If shore power is unavailable, medical procedures cannot take place.

1. Open the lower compartment door that houses the electrical components to access the Power Supply Control Panel. Refer to [Figure 11: Power Supply Control Panel](#).
2. Turn the unit power selector on the reversing contactor panel from “Generator” to “Line”. Be certain to pause for five seconds in between selections.
3. The two indicators on this panel will illuminate according to the power that is received.
4. If the supply of power is good, the green indicator labeled “480V AC OKAY” will illuminate.
5. If the supply of power is experiencing problems, such as being out of phase, the red indicator labeled “480V AC FAULT” will illuminate.
6. Since minor fluctuations in power are common, the “480V AC FAULT” may briefly flicker. This is to be expected. If the “480V AC FAULT” indicator light stays illuminated, switch back to generator power and contact a qualified electrician before operating the medical system.
7. If the power supply is good, the selector for the generator can be moved to the “STOP” position. Once this has been done, the generator will enter into a cooling phase and continue running for approximately five minutes. Do not continue to move the selector switch during this time, the generator will shut down automatically when this stage has completed.
8. Turn the Generator selector switch to the “OFF” position. Be certain to pause for five seconds in between selections.



The Power Cable could present a trip hazard that could result in personal injury. Care should be taken to ensure that the cable is routed properly to minimize its potential as a trip hazard.

5.12 Connect the Phone and Data Lines

The phone and data lines can be found in the underbody storage compartments. Both the phone and data lines can now be connected from the outlets located in the underbody compartments to the receptacles located at the shore site.

The phone lines make use of Hubbell all weather connections. The data lines make use of CAT-5E cable and RJ-45 connections. Refer to [Figure 18: Phone & Data Line Connections](#).



5.13 Connect the Water / Waste Hoses

5.13.1 Humidifier Water Fill

1. The mobile unit contains a water storage tank for the humidifier. This tank is located in the equipment room and must always contain water to insure the specified humidity level remains constant. There are two options for filling the tank. Refer to [Figure 22: Fresh Water and Wastewater Connections](#).
2. A $\frac{3}{4}$ " G.H.T. male threaded hose connection is located above the front kick on the left side of the mobile unit, below the air conditioning units.
3. A fill port is located on the water tank itself for manual fill capability.
4. Remove the cap that covers the connection.
5. Attach the supplied water hose to this connection.
6. Attach the other end of the hose to facility provided faucet.
7. Turn on the water at the faucet.
8. This will fill the water tank for the mobile unit.
9. In the event that the water tank is overfilled, an overflow drain has been provided that exits outside of the mobile unit.

5.13.2 Fresh Water Supply Requirements (Sink Option)

The mobile unit will be supplied with a $\frac{3}{4}$ " diameter, 20'-0" long hose terminated with a $\frac{3}{4}$ " G.H.T. male threaded hose connector located on the left side of the mobile unit. Refer to [Figure 22: Fresh Water and Wastewater Connections](#). The facility must provide a $\frac{3}{4}$ " female connector and a water supply that meets the following specifications:

- A flow rate of 5 gallons per minute.
- 45-60 PSI.
- A maximum temperature of 70°F.

5.13.3 Waste Water Connections (sink option)

1. A $1\frac{1}{2}$ " IPS male connection is required to sink wastewater.
2. Any pipes and drains within 20'-0" of the magnet isocenter should be of non-ferrous materials such as PVC, copper, or brass. All plumbing must comply with all applicable codes.
3. The mobile unit is supplied with a 20'-0" long 1" diameter hose that is terminated with a 1" male threaded connector for sanitary wastewater drainage located on the left side of the mobile unit. Refer to [Figure 22: Fresh Water and Wastewater Connections](#). The facility must provide means of sanitary wastewater drainage from the system, which complies with all local applicable codes.



5.14 Remove Restraining Hardware

There are two types of restraints that need may need to be removed prior to using the medical system. They are as follows.

- The first type deals with the restraints that are used by the medical equipment manufacturer. Follow all instructions provided by the medical equipment manufacturer when adding or removing restraints from the medical equipment. These instructions can be found in the system manuals provided by the medical equipment manufacturer.
- The second type deals with the restraints that are used by the mobile unit manufacturer. Various items may be secured while the unit is being transported. These items may consist of chairs, monitors, door, cabinets, cameras, and printers. Remove all restraining equipment prior to usage of the medical system.

5.15 Prepare the Medical System per OEM Instructions

The medical system can now be prepared for use. Unlock the Scan Room door and follow the OEM instructions in order to prepare the system.

5.16 Canopy Deployment (if applicable)

If the canopy option has been installed on the mobile unit, it can now be deployed. Please follow the instructions below and refer to [Figure 3: Canopy](#).

1. Remove the handle from Equipment Room.
2. Insert the hook of the handle into the hole of the canopy crank mechanism.
3. Turn the handle in order to deploy the canopy.
4. After the canopy has been deployed, return the handle to its storage position inside of Equipment Room.



Section 6: Mobile Unit Transport Procedure



The GE medical system requires the HVAC system to be supplied power at all times when the unit is in the parked position via shore power.



The landing / stabilizing legs and rear suspension are not to be used to raise the mobile unit off the ground. The legs are meant only to level the unit and place it in a parked position. If the legs are used in an attempt to raise the mobile unit from the ground, serious damage may occur to the mobile unit.



Before transporting the mobile unit, check to verify all warning lights as well as all exterior marker lights are working correctly.



A checklist can be found in Appendix A that may be used as a guideline for the following procedure.

6.1 Canopy Retraction (if applicable)

If the canopy option has been installed on the mobile unit, the canopy can now be retracted. Please follow the instructions below and refer to [Figure 3: Canopy](#).

1. Remove the handle from Equipment Room.
2. Insert the hook of the handle into the hole of the canopy crank mechanism.
3. Turn the handle in order to retract the canopy.
4. After the canopy has been retracted, return the handle to its storage position inside of Equipment Room.

6.2 Return the Hydraulic Platform Lift to the Transport Position

Please refer to [Section 10: Hydraulic Platform Lift](#), and follow the procedure outlined below. Lower the hydraulic platform lift to the ground.

1. Remove the restraining hardware and handrails and temporarily place them to the side.
2. Raise the lift to a maximum height and fold the lift upwards to a vertical position. A torsion bar is located within the hydraulic platform lift hardware that will enable one person to move the lift into the transport position.
3. Lower the lift so that it rests securely in the retaining cradles. Make sure that the micro switch is actuated.
4. Insert the transport pins into their transport positions. Make sure that the micro switches are actuated.
5. Remove the remote control pendent from the socket and lock the access door to the hydraulic platform lift controls.
6. Insert the Transport Pins and connect the Lift Transport Restraining Cable securely in place.
7. Open the underbody compartment door and store the remote control pendent and handrail assembly in the underbody storage compartment.



6.3 Secure all Equipment

Two types of restraints need to be supplied before transporting the mobile unit. They are as follows:

- The first type deals with the restraints that are used by the medical equipment manufacturer. Follow all instructions provided by the medical equipment manufacturer when applying restraints to the medical system. These instructions can be found in the system manuals provided by the medical equipment manufacturer.
- The second type deals with the restraints that are used by the mobile unit manufacturer. Various items must be secured prior to transporting the mobile unit. Such items may consist of chairs, monitors, doors, cabinets, cameras, and printers. Use the supplied restraining hardware to secure these items before transporting the mobile unit.
- Close and lock the Scan Room door for transport.

6.4 Switch from Shore Power to Generator Power



When switching from generator power to shore power the “480V AC FAULT” may illuminate and flicker. If the “480V AC FAULT” stays illuminated, reconnect to generator power and call a certified electrician before attempting to reconnect to shore power.



When turning the power selector switch from one position to another, the selector must be paused for a minimum of five seconds between selections. Failure to do so can result in damage to the equipment.

Please refer to [Section 8: Generator](#), for the following procedure.

1. Open the lower compartment door that houses the electrical components to access the Power Supply Control Panel. Refer to [Figure 11: Power Supply Control Panel](#).
2. Move the Generator Stop / Start selector switch to the “Start” position.
3. Allow the generator to run for approximately five (5) minutes.
4. Move the Unit Power Selector switch to the “GEN” position. Be certain to pause for five seconds in the “OFF” position between selections.
5. Close the Equipment Room door.



6.5 Remove and Store the Stair Assembly

Before removing the stair assembly, check the interior of the unit one last time to verify that all equipment is secure and ready for transport.

There are two different options for the stair assembly. The first option is to attach the stairs directly to the mobile unit while the second option is to utilize the supplied platform as well. Although not specifically required, both options can be taken down easier with two people. The instructions are covered below.

6.5.1 Standard Stair System

1. Close and lock the staff door with the key that is provided.
2. Open the door to the underbody storage compartment.
3. Loosen the hardware holding the handrails in place. Remove the handrails from the stair assembly.
4. Lift the clip of the stair assembly up and away from the channel that is located underneath the staff door.
5. Place the stair assembly on the ground.
6. Using the sole of your shoe, step on the spring loaded release to retract the adjustable legs on each side of the stair assembly.
7. Place the stair assembly and handrail inside of the underbody storage compartment and close the compartment door.

6.5.2 Stair Assembly with the Platform (Optional)

1. Close and lock the staff door with the key that is provided.
2. Open the door to the underbody compartment.
3. Release the handrails from their operating positions by loosening the hardware provided. Place the handrails to the side.
4. After the handrails have been removed, the stair assembly can be safely removed from the channel located on the platform.
5. Place the stair assembly to the side.
6. Remove the adjustable legs that were used with the stair assembly.
7. While one person holds the platform in place, another person should remove the adjustable legs that were used to support the platform. Place the adjustable legs to the side.
8. Lift the clip of the platform from the channel located beneath the staff entry door.
9. Place the platform inside of the underbody compartments.
10. Place the stair assembly into the underbody compartments.
11. Place the handrails into the underbody compartments.
12. Close the underbody compartment door.



6.6 Remove the Shore Power Connection



Before connecting or disconnecting from shore power, it is imperative that the shore power connections be moved to the "OFF" position. Failure to do this can result in injury or death to the operator of the mobile unit.

Please refer to [Figure 38: Shore Power Connection](#), for the following procedure.

1. Open the underbody compartment door where the power cable is to be stored.
2. Move the shore power disconnect into the "OFF" position.
3. Unthread the lock ring that is securing the connection.
4. Remove the connector from the receptacle.
5. Return the power cable to the underbody storage compartment.
6. Before closing the compartment door, verify that the power cable access door is closed and latched.

6.7 Disconnect the Water / Waste Hoses

The water connection can be found on the left side exterior of the mobile unit above the kick and below the air conditioner. Be sure to fill the fresh water tank prior to disconnecting the fresh water supply. The fresh water tank must be filled on a daily basis.

1. Verify that the fresh water tank is full.
2. Turn off the water supply at the facility provided faucet.
3. Disconnect the hose from the faucet.
4. Remove the hose from the connection on the mobile unit.
5. Using the provided cap, cover the connection on the mobile unit.
6. Coil the hose and store in the underbody compartment.
7. With the wastewater hose still connected, drain the wastewater tank.
8. After the tank has drained, close the valve located in the sink cabinet.
9. Coil the wastewater hose and store in the underbody compartment.

6.8 Disconnect Phone and Data Lines

Please refer to [Figure 18: Phone & Data Line Connections](#), for the following procedure.

1. Disconnect any phone and data lines that are currently attached to shore receptacles.
2. Open the compartment door and disconnect any phone and data lines that are connected in the underbody storage compartment.
3. Store the phone and data lines in the underbody storage compartment and close the compartment door.



6.9 Raise the Auxiliary Support Legs

Please refer to [Section 12: Landing / Stabilizing Legs](#), for the following procedure.

1. Remove the pins holding the auxiliary support legs in the locked positions.
2. Lift the auxiliary support legs high enough for the pin to be inserted into the lowest available hole, thereby holding the leg as high as possible.
3. Make sure this has been done for both auxiliary support legs. Failure to do this can damage the stabilizing legs when they are retracted.

6.10 Connect the Tractor Air and Electrical Lines

In order to remove the rear stabilizing stands, the air and electrical lines must first be connected from the tractor to the mobile unit. Please refer to [Figure 12: Glad Hand Connections](#) and follow the steps outlined below.

1. Back up the tractor to the mobile unit, but do not back under it at this time.
2. Attach the air and electrical lines from the tractor to the mobile unit. Do not set the trailer brakes.

6.11 Remove the Rear Stabilizing Stands

1. Open the underbody compartment door that stores the rear stabilizing stands.
2. Open the left rear underbody compartment where the control panel that contains the switch and lever that controls the air suspension air bags is found.
3. Move this switch to the "ON" position and the lever to the "UP" position.
4. The rear air suspension system will automatically inflate and the mobile unit will rise to enable removing the stabilizing stands.
5. Remove the rear stabilizing stands. Place the stands in the rear underbody storage compartments.
6. Move the switch to the "OFF" position and the lever to the "DOWN" position inflate the bags for normal ride.
7. Close the underbody storage compartment doors.



6.12 Connect the Tractor to the Mobile Unit

Before connecting the tractor to the mobile unit, be certain that enough clearance has been left for the fifth wheel. If the fifth wheel cannot fit underneath the mobile unit, the front end must be raised. Please refer to [Section 12: Landing / Stabilizing Legs](#), for the following procedure.

1. Move and hold the pump switch in the "ON" position.
2. Pull the levers towards you to extend the legs. This will lift the front end of the mobile unit.
3. Extend the legs high enough to clear the fifth wheel only.
4. Release the pump switch. The pump switch should automatically return to the "Pump OFF" position.
5. Check to verify that enough room has been made for fifth wheel clearance and proceed with caution to connect the tractor to the mobile unit.
6. Verify that the fifth wheel is locked into position.

6.13 Raise the Landing / Stabilizing Legs

After the tractor has successfully connected to the mobile unit, the stabilizing legs can be raised. Refer to [Figure 52: Landing / Stabilizing Leg Assembly](#) for the following procedure.

1. Move and hold the pump switch in the "ON" position.
2. Push the levers away from you to retract the legs. This will lower the front end of the mobile unit.
3. Retract the legs to their transport positions.
4. Release the pump switch. The pump switch should automatically return to the "Pump OFF" position.



6.14 Verify that the Mobile Unit is ready for Transport

1. Before the mobile unit can be transported, a final check of all components is necessary. Please refer to the following when checking the mobile unit.
2. Have the chairs, monitors, doors, cabinets, cameras, and printers been secured? Is the Scan Room door closed and locked? Make sure that all of these items have been secured with the supplied hardware prior to transporting the mobile unit.
3. Are all exterior doors closed and locked? If not, make sure that all exterior doors are closed and locked.
4. Is the hydraulic platform lift in the transport position, fully seated in its retaining cradle? If not, make sure that the hydraulic platform lift is in the transport position, fully seated in the cradle, the transport pins are inserted, and all micro switches are actuated and the Lift Transport Restraining Cable is in place and securely connected.
5. Are all running & marker lights working correctly? If not, replace any LED lights that are not working before transporting the mobile unit.
6. Are any warning lights illuminated? If so, check to find the cause of the warning. Do not move the mobile unit if any warning lights are illuminated or strobe lights are flashing. If further assistance is needed, refer to the Oshkosh Specialty Vehicles VOL I Service/Operation Manual binder for a list of local service representatives or call Oshkosh Specialty Vehicles for further assistance.
7. Is the fuel tank full? Check the fuel gauge, located in the underbody compartment, and fill the fuel tank if necessary.
8. Verify that the air suspension system is fully inflated and at the proper ride height. The lowest point of the trailer sidewall should be approximately 15" above ground level.



Section 7: Electrical System



Electrical, mechanical, pneumatic, and hydraulic safety devices have been installed on this vehicle to help protect against personal injury and / or damage to equipment. Under no circumstances should any attempt be made to disconnect or in any way render any of these devices inoperative. If a malfunction of any safety device is discovered to exist, DO NOT operate the vehicle, and immediately notify appropriate maintenance personnel.



Use and follow the appropriate Lockout/Tagout procedures as required by OSHA Standard 1910.147 when performing maintenance or servicing any electrical, hydraulic or pneumatic systems. See Appendix E for Lockout/Tagout procedures.



Before connecting or disconnecting from shore power, it is imperative that the shore power connections be moved to the "OFF" position. Failure to do this can result in injury or death to the operator of the mobile unit.



It is the operator's responsibility to verify that the shore power receptacle is of the same type and voltage as the connection that is supplied by Oshkosh Specialty Vehicles. Failure to do this can result in injury or death to the operator of the mobile unit as well as irreparable damage to the mobile unit.



The Power Cable could present a trip hazard that could result in personal injury. Care should be taken to ensure that the cable is routed properly to minimize its potential as a trip hazard.



Snubbers have been added to various electrical sub-systems in order to eliminate scanner image problems.

The entire electrical system is installed in conformance with the National Electric Code.

The system is completely installed in the factory. Service access is gained through the underbody compartments of the mobile unit with thin wall conduit and/or wire-mold sized to accept the required service entrance conductors used throughout the mobile unit.

All required tags, labels and rating nameplates are permanently installed in their proper locations before the mobile unit leaves the factory.

There are three panels used in the electrical system.

One 480V AC electrical panel that is located in the Equipment Room of the mobile unit. This panel is responsible for the distribution of all incoming power.

One 120 / 208V AC electrical panel that is located in Equipment Room of the mobile unit. This panel is responsible for the components aboard the mobile unit.

One A1 Panel used for distribution of power to the medical system.



7.1 120/208V AC Electrical Panel

The 120/208V AC electrical panel is responsible for the power supplies to the equipment aboard the mobile unit. If a problem exists with the equipment, or the power supply to them, a circuit breaker will trip in order to prevent damage. On the inside of the panel access door, a listing of all the circuit breakers can be found.



Figure 35: 120/208V AC Electrical Panel

7.2 480V AC Electrical Panel



Make sure that all electrical parts are serviced only by a certified electrician or qualified personnel. Dangerous voltages are present which could result in injury or death.

The 480V AC electrical panel is responsible for all incoming exterior power supplied to the mobile unit. If a problem exists with the equipment, a circuit breaker will trip in order to prevent damage. On the inside of the panel access door, a listing of all the circuit breakers can be found.



[Figure 36: 480V AC Electrical Panel](#)

7.3 A1 Electrical Panel



[Figure 37: A1 Electrical Panel](#)

Used for distribution and control of power to the medical system.



7.4 Facility Power Connection

Although the shore power connection is not an actual physical feature of the mobile unit, it is an integral part of the daily operations.

Circuit Breaker	
Manufacturer:	Facility provided
Ampere Rating:	150 A disconnect

Receptacle	
Manufacturer:	Russellstoll
Model:	DF 2504 FRAB0
Ampere Rating:	200 A

An optional facility receptacle is Crouse Hinds # AR2041.

NOTE: The optional Crouse Hinds facility receptacle IS NOT compatible with the Russellstoll plug and vice versa.



Figure 38: Shore Power Connection

- Oshkosh Specialty Vehicles Connector: The plug that is provided by Oshkosh Specialty Vehicles for connection to the shore power receptacle.
- Connector Lock Ring: Secures the connections.
- Power Cable: The cable that runs between the shore power connections and the 480V AC electrical panel.
- Shore Power Disconnect: The shore power disconnect terminates the power to the receptacle. This must be in the "OFF" position when connecting to the receptacle.
- Shore Power Receptacle Outlet: The receptacle outlet that the shore facility has installed for use with the Oshkosh Specialty Vehicles connector and power cable.
- Shore Power Unit: The complete shore power assembly.

7.5 Power Cable

Descriptions:	Specifications
Service Amps:	150 A
Plug:	Russellstoll; DS 2504 MP000/DF2032, 600V AC, 200 A
5 Wire:	5 pole
Cord:	P-116 MSHA, 150 A, a #1/0 4 conductor type G, 600V – 2000V, 90° C, 45'-0" long

An optional power plug to mate with the Crouse Hinds receptacle is Crouse Hinds # AP20457.

NOTE: The Russellstoll plug IS NOT compatible with the optional Crouse Hinds facility receptacle and vice versa.



Figure 39: Power Cable



The Power Cable could present a trip hazard that could result in personal injury. Care should be taken to ensure that the cable is routed properly to minimize its potential as a trip hazard.



7.6 Special Grounding Note

The unit must have an earth driven ground rod within five (5) feet of the hospitable power receptacle. A grounding cable of a minimum #1/0 AWG must be connected between the grounding rod and the grounding pin of the hospital power receptacle. If required by local codes, another cable to be kept as short as possible may also be connected between the ground stud on the Incoming Power Distribution Panel and an earth driven ground rod.



Figure 40: Power Supply Control Panel Ground Connection

Section 8: Generator



Make sure that all electrical parts are serviced only by a certified electrician or qualified personnel. Dangerous voltages are present which could result in injury or death.



Always make sure that eyes are protected while servicing the unit. Wear safety goggles when prying, drilling, grinding, or working with batteries. Wear safety goggles over regular prescription glasses unless the lenses are made of hardened glass and can serve as safety goggles.



Be certain to disconnect the power before working on any of the electrical systems.



Before connecting or disconnecting from shore power, it is imperative that the shore power connections be moved to the "OFF" position. Failure to do this can result in injury or death to the operator of the mobile unit.



It is the operator's responsibility to verify that the shore power receptacle is of the same type and voltage as the connection that is supplied by Oshkosh Specialty Vehicles. Failure to do this can result in injury or death to the operator of the mobile unit as well as irreparable damage to the mobile unit.



When switching from generator power to shore power the red "480V AC FAULT" may illuminate and flicker. If the red "480V AC FAULT" stays illuminated, reconnect to generator power and call a certified electrician before attempting to reconnect to shore power.



When turning the power selector switch from one position to another, the selector must be paused for a minimum of five seconds between selections. Failure to do so can result in damage to the equipment.



Always inspect the power cable, connectors, and fasteners prior to usage. If during inspection, it is suspected that either internal or external damage has occurred, have a certified electrician inspect and repair the damage before using.



The medical system requires the HVAC system to be supplied power at all times. Generator power is used while the mobile unit is being transported, and shore power must be used while the mobile unit is in the parked position.



When servicing the unit be certain that a first aid kit and fire extinguisher are within reach at all times.

The mobile unit is equipped with a generator that is mounted on the front of the unit in its own housing compartment. The generator supplies power to the unit during transport. The generator cannot be used for performing medical procedures aboard the mobile unit. The power selector switch is located on the power supply control panel. The control panel can be found in the lower compartment.

NOTE: If shore power is unavailable, medical procedures cannot take place.



For Service information, refer to the Oshkosh Specialty Vehicles VOL II Vendor Information binder for the product manual.



Figure 41: Generator

- 120V AC Power Outlet:** An additional outlet has been provided for the operator of the mobile unit to be used if needed.
- Air Filter:** The air filter is responsible for removing all contaminants from the generators air supply.
- Battery:** The battery is used to start the generator.
- Fuel Filter:** The fuel filter is responsible for removing all contaminants from the fuel supply.
- Fuel Pump:** Supplies the generator with fuel from the fuel tank.
- Generator Motor:** The actual motor of the generator.
- Microcomputer:** The microcomputer provides the operator with information that is needed for service purposes.
- Oil Filter:** The oil filter is responsible for removing all contaminants form the oil supply.

8.1 Generator Stop / Start Selector

The selector switch that controls the “Stop” and “Start” settings of the generator can be found on the power supply control panel. The control panel can be found in the interior of the mobile unit in the lower compartment.

When the generator is to be started, the selector switch must be in the “Start” position. The generator cannot take the full load of the mobile unit until it has been allowed to run briefly. Do not move the Unit Power Selector switch to the “GEN” position until the generator has run for approximately five (5) minutes.

When the generator is to be stopped, the selector switch must be in the “Stop” position. Once the selector has been moved to the “Stop” position, the generator will enter into a five (5) minute cooling phase. When the phase has completed, the generator will stop. Do not attempt to stop the generator by repeatedly moving the selector to the “Stop” position.

8.2 Unit Power Selector Switch



The medical system requires the HVAC system to be supplied power at all times. Generator power is used while the mobile unit is being transported, and shore power can be used while the mobile unit is in the parked position.



When turning the selector from one position to another, the selector must be paused for a minimum of five seconds, in the “OFF” position, between selections. Failure to do so can result in damage to the equipment.

The Unit Power Selector is located on the power supply control panel. The control panel can be found in the interior of the mobile unit in the lower compartment. See [Figure 40: Power Supply Control Panel Ground Connection](#).

The selector should be moved to the “LINE” selection when the mobile unit is going to receive power from a shore facility, such as a hospital.

The “OFF” selection should only be used when the mobile unit is being serviced and only by qualified service personnel, as the mobile unit is to have power at all times.

The selector should be moved to the “GEN” selection when the mobile unit is to receive power from the onboard generator.

8.3 480V AC FAULT Indicator Light

This indicator light is located on the power supply control panel. The control panel can be found in the interior of the mobile unit inside of a cabinet. The “480V AC FAULT” indicator light will illuminate if the incoming power source is experiencing any of the following problems:

The power to the mobile unit is out of phase.

The power to the mobile unit is subject to low voltage.

The power of the mobile unit has one or more phase leg problems.

If the “480V AC FAULT” indicator light illuminates, please refer to [Appendix B: Troubleshooting](#).



Section 9: HVAC System



The HVAC system is critical to the operation and life of the medical system. The medical system operates within strict specifications regarding temperature and humidity. All aspects of the HVAC system such as damper settings, venting, component set points, and sensor placement are adjusted for optimum operation. Under no circumstances should these settings be altered.



The GE medical system requires the HVAC system to be supplied power at all times when the unit is in the parked position via shore power.



Figure 42: A/C Unit

Located in the illustration above, the following can be seen.

Combination A/C
and Chiller Unit

This A/C unit is responsible for the environments in Scan Room, Magnet Room, Control Room and Equipment Room. The Chiller supplies chilled liquid to the magnet shield cooler compressor.



9.1 Air Conditioning & Chiller

A common unit supplies air conditioning and chilled liquid. Discharging conditioned air into the equipment room at a steady temperature provides air conditioning. This air is then drawn from the equipment room and distributed to the balance of the mobile unit by two ceiling mounted blowers. The right side blower supplies air to the control room and the left side blower supplies air to the scan room and behind the magnet. If necessary, the air is heated by an in-duct heater prior to discharge. Sensing bulbs located in the return-air stream control the heaters, and a sensor in the equipment room controls the A/C unit.

Chilled liquid is supplied to the magnet shield cooler compressor and the heat exchanger through a common circuit. The reservoir tank and pump are located inside the A/C-Chiller unit, on the left side. The level can be checked and adjusted through the service door in the interior cover panel. The coolant mixture varies depending on the air conditioning system installed. Refer to the Northern Air Service information provided in the Oshkosh Specialty Vehicles VOL II Vendor Information binder for the product manual.



Figure 43: A/C / Chiller Control Panel

The A/C-Chiller's main control panel is located on the front wall of the equipment room. This panel is used to control the operation, temperature settings and display fault lights. Refer to the manufacturer's manual for information on fault lights. **The factory settings provide the proper environment for the MR system, and should not be adjusted.**

A remote digital display and alarm panel is located in the control room at the operator's workstation. This panel provides a digital display of the operating condition of the HVAC System and has an audible warning signal for notification of an A/C-Chiller fault. The switch on the panel can be used to silence the audible alarm. In the event of a fault, the digital display panel provides specific fault information.



[Figure 44: HVAC Monitor and Alarm Panel](#)

In order to ensure proper operation of the HVAC system at all times, refer to [Section 14: General Maintenance](#) and [Section 15: Specific Maintenance](#).

9.2 System Specifications and Descriptions

The HVAC system utilizes forced air.

The HVAC utilizes electricity as the source of power.

Heat producing appliances must be approved by Underwriters Laboratories, Inc. (U.L) and installed in accordance with the terms on their listings.

Air conditioning and heating registers are installed in accordance with the approved plans.

All warning and identification labels as required are installed at the factory.

All aspects of the HVAC system such as damper settings, venting, component set points, and sensor placement are adjusted for optimum operation. Under no circumstances should these settings be altered.

The air conditioning ductwork is lined with a sound absorbent material for reduced noise and operator and patient comfort.

9.3 Exterior HVAC Specifications

The HVAC system is designed to work within certain limitations. The ambient exterior temperatures must be within the range of -20°F to 110°F.



9.4 HVAC Humidifier System



All settings for the humidity system are preset at the factory. Under no circumstances should factory presets be altered.



Proper humidity levels must be maintained to protect sensitive electronic equipment.

The humidifier is responsible for maintaining the humidity levels within the mobile unit. The settings for the humidifier are set to meet the medical system manufacturer's specifications. Under no circumstances should the settings of the humidifier be altered. In order for the humidifier to function properly, the water tank level must be maintained at all times.

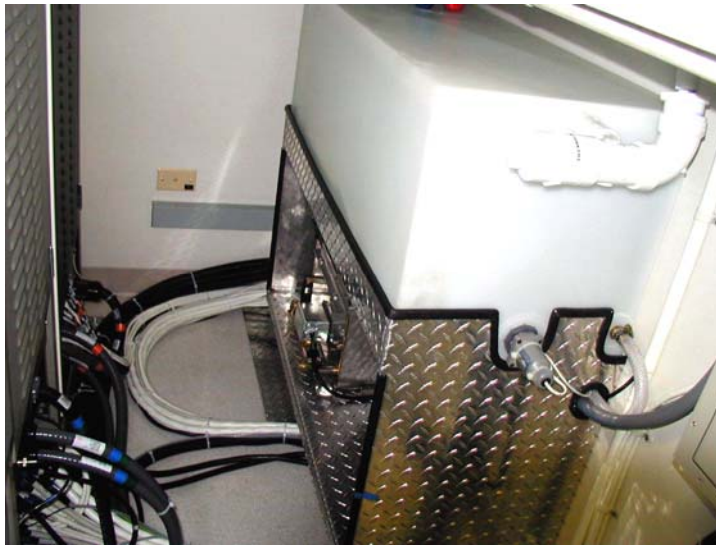


Figure 45: Humidifier Water Tank

- | | |
|----------------------|---|
| Exterior Fill: | The exterior fill connection must be used to allow the mobile unit water supply tank to be filled. |
| Humidifier: | The humidifier is integral to the HVAC system and provides the required humidity to the mobile unit per the medical manufacturer's requirements. |
| Humidity Controller: | The internal humidity of the mobile unit is controlled as part of the HVAC system. The setting is preset at the factory to comply with the medical system manufacturers requirements. |
| Humidity Sensor: | Maintains an accurate reading of the humidity levels inside of the mobile unit. |
| Overflow Drains: | If by chance the water tank is over filled, overflow drains are provided. The drains lead through the floor to the exterior of the mobile unit. |
| Water Supply Tank: | The water tank stores water for the humidifier. |

9.5 System Operation

The humidifier system is capable of producing up to 12 pounds of steam per hour, at 15 amps. A sensor continually monitors the interior of the mobile unit for relative humidity. This sensor is located in the HVAC return duct and is programmed to keep the relative humidity at 40%. If the humidity drops below the set point, the humidifier is signaled to emit more steam. The humidifier creates steam when electrodes in the steam cylinder of the humidifier vaporize the supplied water. The steam then travels through a hose to a distribution pipe located in the return air duct of the HVAC system. Since the steam is injected into the return duct of the HVAC system, both A/C units are supplied with humidified air for distribution throughout the interior of the mobile unit. An air pressure switch is located in the HVAC discharge duct that is interlocked to the humidifier. If for any reason the airflow is disrupted, the humidifier will shut down. When the sensor detects that relative humidity has been reached, a signal is sent to the humidifier to stop it from creating more steam. If the humidity inside of the mobile unit becomes too high or too low, the "Humidity Warning" light will illuminate on the system panel. If this happens, please refer to [Appendix B: Troubleshooting](#) of this manual.

9.6 Water Supply

Water is supplied to the humidifier by means of an onboard water supply tank. The water supply tank can only be filled from the outside of the mobile unit. Plumbing connections at the humidifier are as follows:

A ¾" G.H.T. male threaded hose connection is located under the front kick of the mobile unit, below the air conditioning units.

One 0.5" outer diameter PVC drain line from the steam cylinder for automatic drain cycles. The drain penetrates the floor of the mobile unit in order to empty to the exterior.

One 0.5" outer diameter PVC drain line from the humidifier cabinet. The drain penetrates the floor of the mobile unit in order to empty to the exterior.

One 0.5" outer diameter PVC overflow drain from the water supply tank. The drain penetrates the floor of the mobile unit in order to empty to the exterior.



Figure 46: Humidifier External Water Connection



9.7 Humidity Settings



All settings for the humidity system are preset at the factory. Under no circumstances should factory presets be altered.

The humidity low set point is 30% RH (relative humidity).

The humidity high set point is 60% RH (relative humidity).

9.8 Electrical Connections

Electrical connections at the humidifier are located on a terminal rail behind the cover of the humidifier.

The distribution panel supplies the required 480V AC power via a 15 amp, 3-phase breaker.

A humidistat is connected to the humidifier via a controlling transformer cable. The connection at the humidifier is on the #1 and #2 terminations on control terminal block.

9.9 Instructions

The HVAC system along with the humidifier is set to the required settings per the medical equipment manufacturers' specifications before leaving the factory. Under no circumstances should the settings be altered from their factory specifications.

For additional information, refer to the Oshkosh Specialty Vehicles VOL II Vendor Information binder for the product manual.

9.10 Interior HVAC Specifications

A single air conditioning unit is mounted high on the front wall of the trailer. The size of the unit is dependent upon the system level. Refer to the Northern Air Service information provided in the Oshkosh Specialty Vehicles VOL II Vendor Information binder for the product manual. The condensing coils are directed up to prevent damage during transport. All internal components are commercial grade, and are vibration isolated from the system housing. The system housing is mounted as an integral part of the front wall to prevent water leakage. Discharge temperature in the scan and control rooms is controlled to reduce temperature fluctuations.

The HVAC filters are located in the Equipment Room in the overhead ductwork and can be accessed as shown below.



HVAC Vents Discharge



HVAC Filter Access



Downstream Blower Filter Access



Figure 47: HVAC Components



9.11 Underbody Compartment Heater

The compartment heaters are located in the lower compartments. One with the cryogen compressor and the other in the front compartment both are accessed from the passenger side. These heaters each provide 1.5KW of heat. The compartment heaters will activate when the temperature drops below 40°F and will deactivate when the temperature rises above approximately 45°F.

An optional cold weather kit is also available. This kit is designed for mobile units that endure cold weather climates. It includes an additional compartment heater installed in the fuel compartment, and additional foam insulation sprayed on the underbody of the mobile unit.



Figure 48: Heater

Section 10: Hydraulic Platform Lift

The mobile unit contains a hydraulic platform lift that is used to move personnel and equipment from the ground level to the floor level of the mobile unit. The hydraulic platform lift has a maximum capacity of 2000 and a maximum height of 53”.

In the illustrations below, the hydraulic platform lift can be seen in various stages.

These pictures are meant to represent the hydraulic platform lift in different stages and not to accurately reflect the current design of the mobile unit.

Lift Transport
Restraining Cable



Transport Position



Lowered



Handrails Installed



Raised

Figure 49: Hydraulic Platform Lift



In the illustrations below, the retaining cradle is shown. In the illustration, the transport pins can also be seen. The transport pins are to be used when transporting the mobile unit. The transport pins will prevent the hydraulic platform lift from leaving the retaining cradles during transport. Failure to use the transport pins can result in damage to the mobile.

In the following illustrations, the lift pocket micro switch can also be seen. The Transport Pin micro switches cannot be seen. The micro switches are connected in series to a Control Relay (CR#). If CR# is not energized the transport warning light will illuminate and a strobe light will flash if emergency air is connected to the trailer. These devices are used to notify the operator of the hydraulic platform lift status during transport. CR# also removes power from the lift hydraulic system when all three micro switches are actuated.

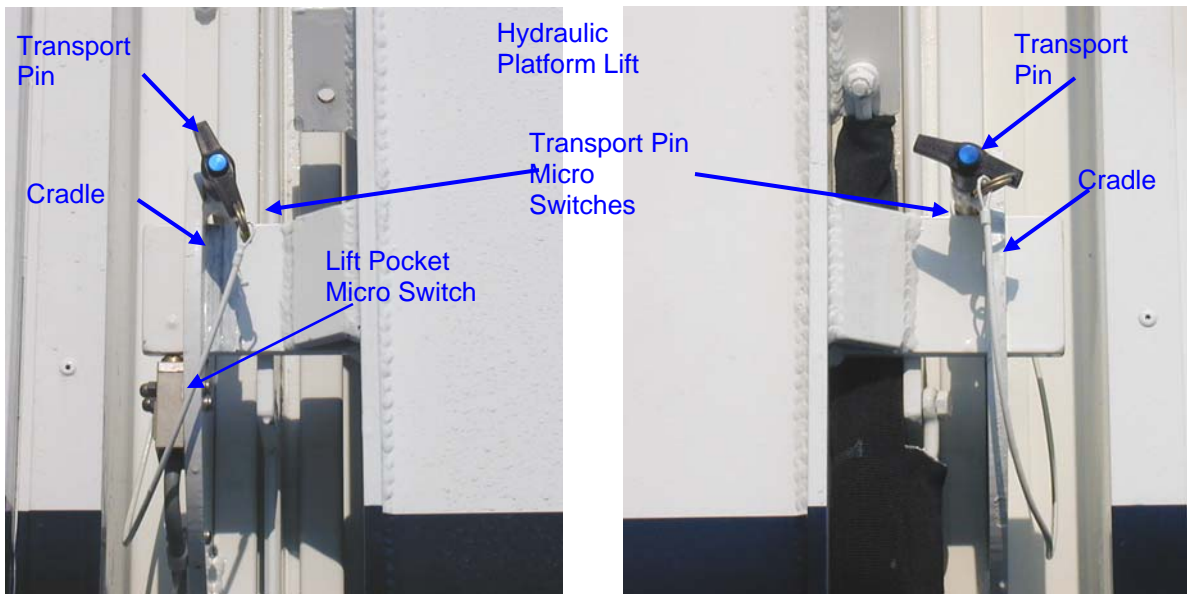


Figure 50: Retaining Cradles

10.1 Safety Features

The hydraulic platform lift has several built in safety features that are designed to provide worry free operation and transportation.

10.1.1 Transport Pins



Failure to release the transport pins for the Hydraulic Platform Lift can result in structural damage to the mobile unit.

Transport pins have been provided for use with securing the hydraulic platform lift. These pins must be used when the mobile unit is being transported. Failure to use these pins could result in structural damage to the mobile unit.

10.1.2 Lift Controls

The hydraulic platform lift controls are located on the exterior of the mobile unit next to the roll door. The lift controls, including the remote control pendant, operate with open contacts. This means that in order for the hydraulic platform lift to be moved upwards or downwards, the control must be held in the desired position.

10.1.3 Handrails

The hydraulic platform lift is supplied with handrails designed to provide an additional margin of safety for personnel being raised or lowered by the lift. The handrails must be installed and properly latched in place prior to raising or lowering personnel on the lift.



It is the Operator's responsibility to ensure that the handrails are properly installed and latched in place prior to raising or lowering personnel on the lift. Failure to do so could result in serious personal injury or death.

10.1.4 Lift Up Indicator Light

On the control panel located inside of the mobile unit, a separate set of controls can be found to operate the roll door. On this panel is a small green indicator light. When the lift is in the raised position the indicator light will illuminate.



It is the Operator's responsibility to ensure that the roll door is not opened unless the lift is in the raised position. Failure to do so could result in serious personal injury or death.

The roll door should not be opened unless this light is on. This light is designed to prevent the operator or other personnel from inadvertently stepping out of the roll door when the hydraulic platform lift is not raised.

10.1.5 Remote Control Pendant

A remote control pendant is included for use with the hydraulic platform lift. The pendant plugs into a jack located between the staff entry door and the hydraulic platform lift roll door behind the lift control panel. The pendant has an expandable cord that allows the operator to be on or near the hydraulic platform lift while it is in operation. The remote control pendant works off the 12V DC power system.

10.1.6 Transport Warning Light



If the Transport Warning Light is on, the mobile unit must not be moved. If the mobile unit is moved while this light is on, irreparable damage to the mobile unit, serious injury or death can occur.

The Transport Warning Light is located on the exterior left side of the mobile unit and will illuminate when the hydraulic platform lift is not in the proper transport position or if the Generator Vibration Isolation Mounts are unlatched. It is the Operator's responsibility to ensure that the Transport Warning Light is functioning properly and that the bulb element is in working order. Please refer to the Oshkosh Specialty Vehicles VOL II Vendor Information binder for the product manual, the Oshkosh Specialty Vehicles VOL I Service/Operation Manual binder for a list of local service representatives, or contact Oshkosh Specialty Vehicles for service.



10.1.7 Transport Warning Strobe Light



If the Transport Warning Strobe Light is flashing the mobile unit must not be moved. If the mobile unit is moved while this light is flashing, irreparable damage to the mobile unit, serious personal injury or death can occur.

The Transport Warning Strobe Light is located on the exterior left side of the mobile unit and will illuminate when the hydraulic platform lift is not in the proper transport position. It is the Operator's responsibility to ensure that the Transport Warning Light is functioning properly and that the bulb element is in working order. Please refer to the Oshkosh Specialty Vehicles VOL II Vendor Information binder for the product manual, the Oshkosh Specialty Vehicles VOL I Service/Operation Manual binder for a list of local service representatives, or contact Oshkosh Specialty Vehicles for service.

10.1.8 Lift Transport Restraining Cable

The lift Transport Restraining Cable, when installed and connected securely, is designed to provide a stop gap measure to prevent the lift from falling to the horizontal position should the lift be improperly stowed.

10.2 Hydraulic System

An internal hydraulic cylinder controls the movement of the hydraulic platform lift. The cylinder is located in the compartment below the roll door.

10.2.1 Operation

When the "UP" function has been selected for the hydraulic platform lift, the pump is activated and fluid is moved from the reservoir through the valve block to the hydraulic cylinder. This causes the lift to move upward. When the "DOWN" function has been selected for the hydraulic platform lift, the pump is not activated, but the fluid is moved from the hydraulic cylinder through the valve block to the reservoir. This causes the hydraulic platform lift to descend.



10.3 Hydraulic Platform Lift Operation

The hydraulic platform lift can be operated with the remote control pendant or the exterior lift controls. The lift can be raised or lowered with these controls. In order to deploy the hydraulic platform lift when setting up the mobile unit, or to place the hydraulic platform lift in its storage position for transporting the mobile unit, refer to the steps outlined below. This same information can also be found under the setup and transport procedures for the mobile unit.

10.3.1 Deploying the Hydraulic Platform Lift for use with the Mobile Unit

After the stair assembly has been installed, the hydraulic platform lift can be deployed for use.

1. Open the underbody compartment doors.
2. Remove the handrails and lift pendant, and place them to the side for now.
3. Close the underbody compartment door.
4. Insert the connector from the lift control pendant into the receptacle located behind the access door to the hydraulic platform lift controls.
5. Remove the Lift Transport Restraining Cable.
6. Remove the transport pins.
7. Raise the lift high enough to clear the cradles, using the remote.
8. Carefully pull down the platform until it is parallel with the ground. A torsion bar is located within the hydraulic platform lift hardware that will enable one person to move the lift into operating position.
9. Lower the platform to the ground, using the lift control pendant.
10. Once the platform has been lowered, install the handrails and secure them with the hardware provided.

10.3.2 Storing the Hydraulic Platform Lift for Transport of the Mobile Unit

1. Lower the hydraulic platform lift to the ground.
2. Remove the restraining hardware and handrails and temporarily place them to the side.
3. Raise the lift to a maximum height and fold the lift upwards to a vertical position. A torsion bar is located within the hydraulic platform lift hardware that will enable one person to move the lift into the transport position.
4. Lower the lift so that it rests securely in the retaining cradles. Make sure that the micro switch is actuated.
5. Insert the transport pins into their transport positions. Make sure that the micro switches are actuated.
6. Connect the Lift Transport Restraining Cable securely in place.
7. Remove the remote control pendant from the socket and lock the access door to the hydraulic platform lift controls.
8. Open the underbody compartment door and store the remote control pendant and handrail assembly in the underbody storage compartment.



Section 11: Intrusion Alarm (optional)

An optional intrusion alarm is available for the mobile unit. This alarm is designed to divert would be intruders from theft, vandalism, or unauthorized entrance of the mobile unit.



[Figure 51: Intrusion Alarm Keypad](#)

11.1 Operation

The alarm is operated via a keypad located by the staff door. When entering the mobile unit, the operator keys in a code to deactivate the alarm. When leaving the mobile unit, the operator keys in a code to activate the alarm. If either the staff entry door or the compartment doors are opened while the alarm is activated, a siren will sound.

For additional information, please refer to the OEM supplied literature. The literature can be found in the Oshkosh Specialty Vehicles VOL II Vendor Information binders that have been included with the mobile unit.



Section 12: Landing / Stabilizing Legs



Under no circumstances should the stabilizing legs and the rear air suspension be used to lift the mobile unit from the ground. If any attempt is made to raise the unit from the ground using the only the stabilizing legs and the rear air suspension, serious damage can occur to the suspension system of the mobile unit.

Both the stabilizing legs and the auxiliary support legs can be found at the front of the unit. The stabilizing legs installed on this mobile unit are only for the purpose of parking and stabilizing the mobile unit. For additional information, please refer to the OEM supplied literature. The literature can be found in the product information binders that have been included with the mobile unit.



Figure 52: Landing / Stabilizing Leg Assembly

Stabilizing Leg Controls:	The leg controls.
Stabilizing Leg:	Allows the mobile unit to be parked without the tractor being attached to the unit.
Lever: Front Right	Controls the Front right side leg.
Lever: Front Left	Controls the Front left side leg.
Pump ON / OFF Switch	The switch must be held in the ON position when extending or retracting the legs.
Auxiliary Support Legs:	The auxiliary support legs provide a fixed leg for use as a backup in case the stabilizing legs fail.
Sand Shoe:	Helps prevent the stabilizing legs from sinking due to weight.



12.1 Stabilizing Stands

The stabilizing stands are inserted beneath the rear supports of the mobile unit, and allow the mobile unit to be stabilized for all medical procedures. The stands are stored in the rearmost underbody compartments. When in use, the stands must be centered underneath the rear supports of the mobile unit. See [Figure 20: Stabilizing Stands](#).

12.2 Rear Air Suspension System Controls



If the rear air suspension is not functioning properly the mobile unit must not be moved. If the mobile unit is moved, irreparable damage can occur to the medical system and the mobile unit itself.

RAISE: (to install Stands)

When the switch is in the "ON" position and the lever is in the "UP" position, the rear air suspension will inflate and raise the rear of the unit. This must be done to insert the stabilizing stands.

DEFLATE: (For Set up only)

When the switch is in the "ON" position, and the lever is in the "DOWN" position, the rear air suspension will deflate and the mobile unit will lower. Prior to placing the selector in this position, the rear stabilizing stands must be inserted.

NORMAL RIDE: (For Transport)

When the switch is in the "OFF" position, and the lever is in the "DOWN" position, the rear suspension will inflate and the mobile unit will automatically rise to transport height. Failure to turn the selector to the "OFF" position with the lever in the "DOWN" position, prior to transporting the mobile unit, can cause irreparable damage to both the mobile unit and medical system.



[Figure 53: Air Bag Controls](#)

Section 13: Lighting System

The lighting provided for the mobile unit can be divided into either interior lighting, or exterior lighting. Listed below are descriptions of the provided lighting.

13.1 Emergency Lighting

In the event that the main AC power fails, a dual beam emergency light is provided. This light will automatically illuminate when the main AC power is lost. It is located in the Control Room. The emergency lighting system is wired into a 120V AC electrical system that allows the light's internal circuitry to keep its batteries at 100% charge. The emergency light will illuminate the exit door and last for approximately 90 minutes.



[Figure 54: Emergency Dual Beam Lighting](#)



13.2 Exterior Lighting

IMPORTANT

All warning lights are located on the driver's side of the mobile unit.

The exterior lighting system can be divided as follows. For additional information of the warning lights, please refer to [Appendix B: Troubleshooting](#).

13.2.1 Underbody Compartment Lighting

Located inside of the underbody compartments there are wall mounted halogen lights connected to timers. The timers allow the lights to be set for up to 30 minutes before automatically turning off. There is one light provided on each side of the underbody.



Figure 55: Compartment Light

In addition, since the fuel compartment is sealed off from the others, a push button dome light has been included in this compartment.

13.2.2 Service Lighting



Figure 56: Drop Light

A cord-o-matic drop light with a 50'-0" cable is supplied with the mobile unit. The droplight aboard the mobile unit can be found in Equipment Room. The light is generally used during service applications when additional light is required. The light is plugged into a nearby miscellaneous 120V AC outlet.

13.2.3 Staff Door Lighting

An exterior light is located in between the roll door and staff door above the hydraulic platform lift controls and above the staff door. This provides for additional illumination of the hydraulic platform lift and the stairs when the facility provided lighting is insufficient. The switch for this light is located inside of the mobile unit on the raceway next to the staff door.



Figure 57: Staff Door Lighting



13.2.4 Scene Lighting

Three exterior lights located on the right side of the unit above the roll door, on the left side of the unit and on the rear of the unit provide additional illumination for the trailer setup when the facility provided lighting is insufficient. The switch for these lights is located inside the left front underbody compartment of the mobile unit with the landing leg control panel. The lights are control by a timer switch and will shut off automatically.



Left Scene Light



Right Scene Light



Rear Scene Light

Figure 58: Scene Lights

13.2.5 Marker & Running Lights

When the mobile unit is in transit, federal law requires specific illumination characteristics. The mobile unit meets and exceeds these standards as outlined in Motor Vehicle Safety Standards Guide, Federal Safety Standard No. 108-4.

All lights are 12V DC, and are powered by the tractor. All wiring is run through the underbody wire harnesses. The top marker lights are wired through a 0.5" loom pipe that is run through the sidewalls of the mobile unit. The wires terminate at the glad-hands which are located in the front of the mobile unit for tractor hookup. Two electrical connections are supplied on the glad-hands, one six terminal connection and one seven terminal connection.

13.3 Interior Lighting

The interior lighting system can be divided as follows.

13.3.1 Equipment Room

The light controls for the lighting in Equipment Room are located just inside the Staff Entry door to that leads into Control Room. Recessed light fixtures are located in the ceiling panels and have been strategically placed for effective illumination of the equipment both during operation and while being service.



[Figure 59: Equipment Room Lighting](#)



13.3.2 Control Room

There are two different lighting systems for Control Room. They are as follows.

Three switches located next to the staff door control the lighting located in the Control Room ceiling panels, Equipment Room ceiling panels, and Exterior Entry lighting.

Another switch controls the Control Room halogen lighting.



Figure 60: Control Room Lighting

13.3.3 Scan Room

There are two different lighting systems for Scan Room. The systems are as follows.

Two switches located next to the Scan Room door controls the halogen lighting located in the ceiling panels

The center mounted patient prep light is located directly above the patient table and is controlled by another switch located next to the Scan Room door.

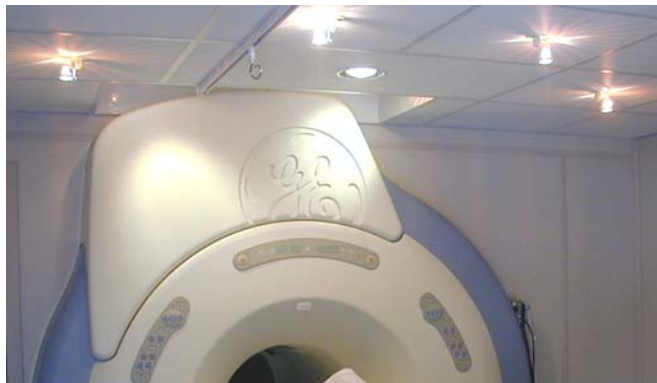


Figure 61: Scan Room Lighting

13.3.4 Magnet Room



Magnet Room Lighting



There are two halogen light fixtures located in Magnet Room. These lights are for illuminating the rear of the magnet. Another switch located next to the Scan Room door controls these two fixtures.

[Figure 62: Scan Room / Magnet Room Lighting and Switches](#)



13.4 Warning Lights



AC Power ON Light and Platform lift Transport Warning Light

Figure 63: Warning Lights

Warning lights have been installed on the exterior left side of the mobile unit in order to provide the operator and technician of the status of the mobile unit at all times during transit or while in the parked position. A description of each of the warning lights and their location can be found below. If any of the warning lights are illuminated, please refer to [Appendix B: Troubleshooting](#) for additional information.

13.4.1 Power Warning Light



The GE medical system requires the HVAC system to be supplied power at all times when the unit is in the parked position via shore power.

The Power Warning Light is located on the exterior left side of the mobile unit and will illuminate when the mobile unit is receiving power. When it is not illuminated, it signifies to the operator that power is not applied to the system. A qualified electrician should be called immediately to look at the electrical system. Refer to [Appendix B: Troubleshooting](#) for more information.

13.4.2 Transport Warning Light



If the Transport Warning Light is on, the mobile unit must not be moved. If the mobile unit is moved while this light is on, irreparable damage to the mobile unit, serious injury or death can occur.

The Transport Warning Light is located on the exterior left side of the mobile unit and will illuminate when the hydraulic platform lift is not in the proper transport position. It is the Operator's responsibility to ensure that the Transport Warning Light is functioning properly and that the bulb element is in working order. Please refer to the Oshkosh Specialty Vehicles VOL II Vendor Information binder for the product manual, the Oshkosh Specialty Vehicles VOL I Service/Operation Manual binder for a list of local service representatives, or contact Oshkosh Specialty Vehicles for service.

13.4.3 Transport Warning Strobe Light



If the Transport Warning Strobe Light is flashing the mobile unit must not be moved. If the mobile unit is moved while this light is flashing, irreparable damage to the mobile unit, serious personal injury or death can occur.

The Transport Warning Strobe Light is located on the exterior left side of the mobile unit and will illuminate when the hydraulic platform lift is not in the proper transport position. It is the Operator's responsibility to ensure that the Transport Warning Light is functioning properly and that the bulb element is in working order. Please refer to the Oshkosh Specialty Vehicles VOL II Vendor Information binder for the product manual, the Oshkosh Specialty Vehicles VOL I Service/Operation Manual binder for a list of local service representatives, or contact Oshkosh Specialty Vehicles for service.



[Figure 64: Lift Transport Warning Strobe](#)



Section 14: General Maintenance



Electrical, mechanical, pneumatic, and hydraulic safety devices have been installed on this vehicle to help protect against personal injury and / or damage to equipment. Under no circumstances should any attempt be made to disconnect or in any way render any of these devices inoperative. If a malfunction of any safety device is discovered to exist, DO NOT operate the vehicle, but immediately notify appropriate maintenance personnel.



Use and follow the appropriate Lockout/Tagout procedures as required by OSHA Standard 1910.147 when performing maintenance or servicing any electrical, hydraulic or pneumatic systems. See Appendix E for Lockout/Tagout procedures.



Make sure that all electrical parts are serviced only by a certified electrician or qualified personnel. Dangerous voltages are present which could result in injury or death.



Always make sure that eyes are protected while servicing the unit. Wear safety goggles when prying, drilling, grinding, or working with batteries. Wear safety goggles over regular prescription glasses unless the lenses are made of hardened glass and can serve as safety goggles.



Be certain to disconnect the power before working on any of the electrical systems.



When servicing the unit be certain that a first aid kit and fire extinguisher are within reach at all times.

14.1 Daily Maintenance

1. Water tanks should be checked for proper water levels.
2. Fuel tank should be checked for proper fuel levels.
3. During cold weather, verify that all underbody heaters are operational.
4. Keep the air intake grills on the computer cabinets for the medical system free and clear of obstructions.
5. Keep the A/C grills clean and free of debris.
6. Check and verify that no warning lights are illuminated.



14.2 Weekly Maintenance

1. Clean RF door trim with a mild cleaning solvent and wipe with a clean cloth.
2. Lubricate the hydraulic platform lift side rails and pivot points with an ample amount of ZEP 2000, OSV Part Number 6100811.
3. Check the primary and downstream blower A/C filters. Clean and replace if necessary. A/C must be "OFF" to check and replace filters. Refer to [Figure 47: HVAC Components](#) for location.
4. Check the oil and water levels in the generator and refill if necessary.
5. Check the electrolyte levels in the DC batteries and fill if necessary using only distilled water.
6. Check all running lights, marker lights, brake lights, and turn signals.
7. Check tire pressure and verify that all wheels are at the pressure specified by the tire manufacturer.
8. Check the fluid level in the hydraulic reservoir using the site glass. Add fluid if necessary. Use only AWF all weather fluid Automatic Transmission Fluid.

14.3 Monthly Maintenance

1. Lubricate the side rails of the roll door with Mobil – Mobilith AW2 heavy-duty multipurpose industrial grease.
2. Lubricate all RF interlock switches.
3. Put a few drops of 20W oil, or similar graphite oil, on the swivel pin of all door hinges. Only use dry graphite on key openings of all door locks.
4. Check the operation of the smoke detectors and vacuum internally.
5. Check the fire extinguisher gauges for safe charges.
6. Inspect the power cables for any damage.
7. Check the cable tie downs.
8. Check for cut, damaged, or loose wire connections.
9. Check and verify that all connector bolts are tight and secure.
10. A qualified A/C technician must check the A/C condensers every month. Refer to the Air Conditioning Owner's Manual for more information.
11. Lubricate the front landing / stabilizing legs.
12. Check the refrigerant level in the water chiller unit.
13. Have a qualified technician check wheel lug nuts with torque wrench and verify that all inner and outer wheels, both the front and rear, are tightened to 450-500 foot pounds. This must be done after every 500 miles of driving. In accordance with torque procedure, lugs and nuts must be installed dry. Do not use any type of lubricant.



14.4 Quarterly Maintenance

1. Have a qualified technician check wheel lug nuts with torque wrench and verify that all inner and outer wheels, both the front and rear, are tightened to 450-500 foot pounds. This must be done after every 500 miles of driving. In accordance with torque procedure, lugs and nuts must be installed dry. Do not use any type of lubricant.
2. Once a year, inspect and clean the exhaust fan, duct, and vent to remove any build up of airborne debris that could impair the proper functioning of the exhaust fan or impede airflow. To ensure specifications are met, a qualified technician should measure the airflow. Contact Oshkosh Specialty Vehicles for the airflow specifications for your unit. See [Figure 16: Magnet Room Helium Gas Exhaust Fan](#) for the location of the exhaust fan.

A copy of your vehicles completed quarterly Preventive Maintenance Checklist may be required for warranty reimbursement. See [Appendix G: Quarterly Maintenance Checklist](#) .

Oshkosh Specialty Vehicle's Service department has certified technicians, genuine parts and the information technology needed for your assistance. Please call OSV service for you're servicing needs.

Thank you for choosing Oshkosh Specialty Vehicles. If you have any questions call us toll free at 1-800-839-0630. We'll be happy to assist you!!



Section 15: Specific Maintenance



Electrical, mechanical, pneumatic, and hydraulic safety devices have been installed on this vehicle to help protect against personal injury and / or damage to equipment. Under no circumstances should any attempt be made to disconnect or in any way render any of these devices inoperative. If a malfunction of any safety device is discovered to exist, **DO NOT** operate the vehicle, but immediately notify appropriate maintenance personnel.



Use and follow the appropriate Lockout/Tagout procedures as required by OSHA Standard 1910.147 when performing maintenance or servicing any electrical, hydraulic or pneumatic systems. See Appendix E for Lockout/Tagout procedures.



Make sure that all electrical parts are serviced only by a certified electrician or qualified personnel. Dangerous voltages are present which could result in injury or death.



Always make sure that eyes are protected while servicing the unit. Wear safety goggles when prying, drilling, grinding, or working with batteries. Wear safety goggles over regular prescription glasses unless the lenses are made of hardened glass and can serve as safety goggles.



Be certain to disconnect the power before working on any of the electrical systems.



The HVAC system is critical to the operation and life of the equipment. The medical equipment operates within strict limits regarding temperature and humidity. All aspects of the HVAC system such as baffling, venting, component set points, and sensor placement are adjusted for optimum operation. Under no circumstances should any aspect of the HVAC system be altered from factory specifications.



During seasons of low humidity, the humidifier will need to be filled more often.



Image quality can be impaired with improper door closer adjustment.



A power washer should never be used to clean the A/C units. Serious damage to the A/C coils may occur.



When servicing the unit be certain that a first aid kit and fire extinguisher are within reach at all times.

15.1 Door Closer Adjustments

The door closer must be adjusted so that the door does not slam shut. Refer to the door closer component sheet in the VOL II Vendor Information manual for proper adjustment. Adjust door closer as required to insure proper non-slamming door action.



15.2 Electrical System

1. Inspect the power cables for any damage.
2. Check the cable tie downs.
3. Check for cut, damaged, or loose wire connections.
4. Check and verify that all connector bolts are tight and secure.

15.3 Cryogen Compressor

The cryogen compressor is supplied by GE. For information regarding the cryogen compressor, please refer to the manuals supplied by GE.

15.4 Generator

For generator maintenance, please refer to the three (3) CDs in the Oshkosh Specialty Vehicles VOL II Vendor Information binder for the product manual, the Oshkosh Specialty Vehicles VOL I Service/Operation Manual binder for a list of local service representatives, or contact Oshkosh Specialty Vehicles for service.

15.5 Humidity System



During seasons of low humidity, the humidifier will need to be filled more often.

The fresh water tank supplies the humidifier with water. The water level must be maintained at all times. Follow the steps outlined below and please refer to [Figure 45: Humidifier Water Tank](#), and [Figure 46: Humidifier External Water Connection](#) if necessary.

1. Check the water tank to determine the water level.
2. Open the overflow valve.
3. Attach one end of a hose to the exterior water tank fill valve and the other end to the shore supply.
4. Turn on the water source to begin filling the tank.
5. After the water tank is full, turn off the water source.
6. Detach the hose at both ends and place in the underbody storage compartments.
7. Turn off the overflow control valve.



15.6 HVAC System



The HVAC system is critical to the operation and life of the equipment. The medical equipment operates within strict limits regarding temperature and humidity. All aspects of the HVAC system such as baffling, venting, component set points, and sensor placement are adjusted for optimum operation. Under no circumstances should any aspect of the HVAC system be altered from factory specifications.

1. The HVAC system is designed specifically to maintain only the internal environment of the mobile unit. The HVAC system is not designed to handle areas outside of the mobile unit such as adjoining corridors or hallways.
2. It is important to be sure that the doors, partitions, and baffling are in the intended positions before running the medical system.
3. Do not attempt to store boxes, or any other items near computer system air inlets or in the aisles. Such actions will disrupt the intended airflow requirements.
4. A qualified A/C technician must check the A/C condensers every month. Please refer to the Oshkosh Specialty Vehicles VOL II Vendor Information binder for the product manual, the Oshkosh Specialty Vehicles VOL I Service/Operation Manual binder for a list of local service representatives, or contact Oshkosh Specialty Vehicles for service.

15.7 Hydraulic Platform Lift

Lubricate the hydraulic platform lift side rails and pivot points with an ample amount of ZEP 2000, OSV Part Number 6100811.



15.8 RF Shielding

When the mobile unit leaves the factory, the RF room is certified at 85 db or better. Weekly checks are required to verify the integrity of the RF room.

Clean RF door trim with a mild cleaning solvent and wipe with a clean cloth.



Close up of RF door trim

[Figure 65: RF Shielding](#)

15.9 Cryogen Gas Exhaust Fan

Once a year, inspect and clean the exhaust fan, duct, and vent to remove any build up of airborne debris that could impair the proper functioning of the exhaust fan or impede airflow. To ensure specifications are met, a qualified technician should measure the airflow. Contact Oshkosh Specialty Vehicles for the airflow specifications for your unit. See **[Figure 16: Magnet Room Helium Gas Exhaust Fan](#)** for the location of the exhaust fan.

Appendix A: Mobile Unit Checklist



It is the operator's responsibility to verify that the shore power receptacle is of the same type and voltage as the connection that is supplied by Oshkosh Specialty Vehicles. Failure to do this can result in injury or death to the operator of the mobile unit as well as irreparable damage to the mobile unit.



Before connecting or disconnecting from shore power, it is imperative that the shore power connections be moved to the "OFF" position. Failure to do this can result in injury or death to the operator of the mobile unit.



The Power Cable could present a trip hazard that could result in personal injury. Care should be taken to ensure that the cable is routed properly to minimize its potential as a trip hazard.



Make sure that all electrical parts are serviced only by a certified electrician or qualified personnel. Dangerous voltages are present which could result in injury or death.



Always make sure that eyes are protected while servicing the unit. Wear safety goggles when prying, drilling, grinding, or working with batteries. Wear safety goggles over regular prescription glasses unless the lenses are made of hardened glass and can serve as safety goggles.



Be certain to disconnect the power before working on any of the electrical systems.



The GE medical system requires the HVAC system to be supplied power at all times. During transit of the mobile unit via the generator and when the unit is in the parked position via shore power.



Always inspect the power cable, connectors, and fasteners prior to usage. If during inspection, it is suspected that either internal or external damage has occurred, have a certified electrician inspect and repair the damage before using.



When switching from generator power to shore power the yellow "480V AC Warning Light" may illuminate and flicker. If the yellow "480V AC Warning Light" stays illuminated, reconnect to generator power and call a certified electrician before attempting to reconnect to shore power.



The landing / stabilizing legs and rear suspension are not to be used to raise the mobile unit off the ground. The legs are meant only to level the unit and place it in a parked position. If the legs are used in an attempt to raise the mobile unit from the ground, serious damage may occur to the mobile unit.



Failure to completely exhaust the suspension before uncoupling the airlines may result in damage to the suspension of the mobile unit.



The rear stabilizing stands must be removed prior to the connecting the tractor to the mobile unit. Failure to do this can result in equipment damage



The air ride control valve must be in the normal ride position before the mobile unit can be transported. If the air ride control valves are not in the normal ride position, irreparable damage may occur to the mobile unit.



Before transporting the mobile unit, check to verify all warning lights as well as all exterior marker lights are working correctly.



When servicing the unit be certain that a first aid kit and fire extinguisher are within reach at all times.

Mobile Unit Setup Checklist

1. Park the mobile unit on the pad per the site-planning guide.
2. **DO NOT** set the trailer brakes.
3. Lower the front landing / stabilizing legs. Set the trailer parking brake.
4. Disconnect the tractor while leaving the air and electrical lines engaged.
5. Release the trailer parking brake. Raise the rear of the mobile unit and install the rear stabilizing stands. Exhaust the rear suspension.
6. Re-level the mobile unit as needed. Use the front landing / stabilizing legs as well as the rear suspension as necessary. Set the trailer parking brake.
7. Disconnect the tractor air and electrical lines.
8. Lower the auxiliary support legs and insert the pins.
9. Install the stair assembly.
10. Remove the Lift Transport Restraining Cable and Transport Pins.
11. Deploy the hydraulic platform lift.
12. Verify that the shore power disconnect is in the "OFF" position and connect to the power cable to the shore power receptacle. Place the shore power disconnect in the "ON" position.
13. Move the power selector switch to the "Line" position and verify that the incoming power supply is good.
14. Move the Generator Stop / Start selector switch to the "Stop" position.
15. Connect the phone and data lines.
16. Connect the water supply and the waster water connections.
17. Remove all restraining hardware.
18. Prepare the medical system per OEM instructions.
19. Check for any warning lights.
20. Deploy the Roll Door Canopy, if equipped.



Mobile Unit Transport Checklist

1. Retract the Canopy, if equipped.
2. Return the hydraulic platform lift to the transport position.
3. Insert the Transport Pins and connect the Lift Transport Restraining Cable securely in place.
4. Secure all medical equipment per OEM requirements.
5. Secure all equipment; this includes all moveable objects such as chairs, monitors, doors, cabinets, cameras, and printers. Close and lock the Scan Room door.
6. Move the Generator Stop / Start selector switch to the "Start" position. Allow the generator to run for approximately five (5) minutes.
7. Move the power selector switch to the "Generator" position.
8. Lock the Staff Entry door and remove and store the stair assembly.
9. Move the shore power disconnect to the "OFF" position and disconnect the power cable.
10. Disconnect the water supply and the wastewater connections.
11. Disconnect phone and data lines.
12. Raise the auxiliary support legs.
13. Connect the tractor air and electrical lines.
14. Raise the rear of the unit and remove the rear stabilizing stands and store them in the underbody compartment. **Return the air ride control switch and valve to the normal ride positions.**
15. Lower the landing / stabilizing legs enough to couple the tractor to the unit.
16. Connect the tractor to the mobile unit.
17. Raise the landing / stabilizing legs.
18. Verify that the mobile unit is ready for transport.
19. Are all exterior doors closed and locked?
20. Is the hydraulic platform lift in the transport position, fully seated in its retaining cradle?
21. Are all running & marker lights working correctly?
22. Are any warning lights flashing?
23. Is the fuel tank full?
24. Is the optional fire suppression system unarmed?
25. Verify that the air suspension system is fully inflated and at the proper ride height. The lowest point of the trailer sidewall should be approximately 15" above ground level.



Appendix B: Troubleshooting

If any of the following troubleshooting guides do not correct the problem, or if the problem worsens, please refer to the Oshkosh Specialty Vehicles VOL II Vendor Information binder for the product manual, the Oshkosh Specialty Vehicles VOL I Service/Operation Manual binder for a list of local service representatives, or contact Oshkosh Specialty Vehicles for service.

Hydraulic Platform Lift is inoperable....

Please refer to the Oshkosh Specialty Vehicles VOL II Vendor Information binder for the product manual, the Oshkosh Specialty Vehicles VOL I Service/Operation Manual binder for a list of local service representatives, or contact Oshkosh Specialty Vehicles for service.

AC Power Indicator Light is off

If the AC Power Indicator Light is "OFF" then the mobile unit is not receiving AC power. The mobile unit must have power at all times. If the mobile unit is on site, shore power must be connected.

If the mobile unit is being transported, then the vehicle must be stopped and the following items checked. Please refer to the product manual located in Volume II of the literature provided by Oshkosh Specialty Vehicles. Also located in the volume is a list of local service representatives. For any additional information, please contact Oshkosh Specialty Vehicles.

Generator power is connected when the A/C power Off light is out:

- | | |
|----|-------------------------------------|
| 1. | Verify that the fuel tank has fuel. |
|----|-------------------------------------|

Transport Warning Light is on...



If the Transport Warning Light is on, the mobile unit must not be moved. If the mobile unit is moved while this light is on, irreparable damage to the mobile unit, serious injury or death can occur.

If the Transport Warning Light is illuminated, some part of the mobile unit is not ready for transport. Before the mobile unit can be transported, this light must be off. Please refer to the following table:

Problem:	Solution:
The hydraulic platform lift is not in the proper transport position.	1. Make sure that the hydraulic platform lift is seated in the cradles.
	2. Make certain that the transport pins have been inserted.
	3. If Emergency Air from the tractor is connected to the trailer, the Transport Warning Strobe light will also be activated. Ensure that #s 1 & 2 above have been accomplished.
Generator Vibration Isolation Mounts are not latched	1. Make sure that the Generator Vibration Isolation Mounts are latched.



Suspension Transport Indicator Light is illuminated...



If the Suspension Transport Indicator Light is on, the mobile unit must not be moved. If the mobile unit is moved without the rear air suspension functioning properly, irreparable damage can occur to the mobile unit.

If the Suspension Transport Indicator Light is on, the rear air bags / suspension of the mobile unit are not ready for transport. This light must be off to move the mobile unit. Check the rear air bag suspension control switch. The switch must be in the “OFF” / normal ride position. This is the normal ride position. If the switch is in this position the unit will automatically adjust the rear suspension to the transport position.

If the switch is in the correct position and the light still appears a problem exists within the rear suspension. Please refer to the product manual located in Volume II of the literature provided by Oshkosh Specialty Vehicles. Also located in the volume is a list of local service representatives. For any additional information, please contact Oshkosh Specialty Vehicles.

Humidity is out of specifications...

The humidity settings for the mobile unit are 30% RH to 60% RH (relative humidity). If the mobile unit is experiencing humidity levels outside of this range, either too low or too high, please refer to the following table.

Problem		Check for:	Solution:
The humidity inside of the mobile unit is too high.	1.	Check for exterior doors that have been left open during humid conditions.	The HVAC system can only support the environment of the mobile unit. Unless opened for use, all exterior doors should remain closed all of the time.
	2.	Check for blocked or dirty air vents and/or air conditioner filters.	Clean the air vents and/or change the air conditioner filters. After this has been done, check for any changes to the humidity levels.
	3.	Check to see if the humidifier is constantly running.	Verify that the humidifier is set between 30% and 60% RH (relative humidity). If the humidifier is still running constantly, contact Oshkosh Specialty Vehicles for service.
	4.	Check to see if the “ALARM” LED is illuminated.	If further information is needed, please refer to the Oshkosh Specialty Vehicles VOL II Vendor Information binder for the product manual, the Oshkosh Specialty Vehicles VOL I Service/Operation Manual binder for a list of local service representatives, or contact Oshkosh Specialty Vehicles for service.



Problem		Check for:	Solution:
<p>The humidity inside of the mobile unit is too low.</p>	1.	<p>Check for open exterior doors left open during arid weather conditions.</p>	<p>The HVAC system can only support the environment of the mobile unit. Unless opened for use, all exterior doors should remain closed all of the time.</p>
	2.	<p>Check for blocked or dirty air vents and/or air conditioner filters.</p>	<p>Clean the air vents and/or change the air conditioner filters. After this has been done, check for any changes to the humidity levels.</p>
	3.	<p>Check to see if the A/C disconnect is in the "OFF" position.</p>	<p>Turn the A/C disconnect to the "ON" position.</p>
	4.	<p>Check the water levels of the water tank.</p>	<p>Fill the water tank to the specified limit.</p>
	5.	<p>Check to see if the humidifier disconnect is in the "ON" position.</p>	<p>Move the humidity disconnect to the "ON" position and verify that the humidifier is set between 30% and 60% RH (relative humidity). If the humidifier is running and the humidity level does not change, a problem exists within the humidity system. Please refer to the Oshkosh Specialty Vehicles TVOL II Vendor Information Tbinders for the product manual, the Oshkosh Specialty Vehicles VOL I Service/Operation Manual binder for a list of local service representatives, or contact Oshkosh Specialty Vehicles for service.</p>



Temperature is out of specifications...

If the temperature is out of specifications, either too high or too low, refer to the following table.

Problem:		Check for:	Solution:
The temperature inside of the mobile unit is too warm.	1.	Check for exterior doors left open during warm weather conditions.	The HVAC system can only support the environment of the mobile unit. Unless opened for use, all exterior doors should remain closed all of the time.
	2.	Check for blocked or dirty air vents and/or air conditioner filters.	Clean the air vents and/or change the air conditioner filters. After this has been done, verify that cold air is blowing.
	3.	Check to see if the A/C disconnect is in the "OFF" position.	Turn the A/C disconnect to the "ON" position.
Problem:		Check for:	Solution:
The temperature inside of the mobile unit is too cold.	1.	Check for open exterior doors left open during cold weather conditions.	The HVAC system can only support the environment of the mobile unit. Unless opened for use, all exterior doors should remain closed all of the time.
	2.	Check for blocked or dirty air vents and/or air conditioner filters.	Clean the air vents and/or change the air conditioner filters. After this has been done, verify that warm air is blowing.
	3.	Check to see if the A/C disconnect is in the "OFF" position.	Turn the A/C disconnect to the "ON" position.



Appendix C: HVAC Set Points



The HVAC system is critical to the operation and life of the equipment. The medical equipment operates within strict limits regarding temperature and humidity. All aspects of the HVAC system such as baffling, venting, component set points, and sensor placement are adjusted for optimum operation. Under no circumstances should any aspect of the HVAC system be altered from factory specifications.



Be certain that the HVAC system is operational at all times.

The factory settings provide the proper environment for the MR system, and should not be adjusted.

Please refer to the Oshkosh Specialty Vehicles VOL II Vendor Information binder for the product manual, the Oshkosh Specialty Vehicles VOL I Service/Operation Manual binder for a list of local service representatives, or contact Oshkosh Specialty Vehicles for service.





Appendix D: A-1 Circuit Malfunction Checklist

Category 1

Visual Checks – Check for the most common occurrences.

Has the Start button been depressed?

Is the mobile unit on shore power?

Category 2

Component Checks (some tools are required).

Check the emergency off button in Control Room. N.C.?

Check the emergency off button in Scan Room. N.C.?

Check the functionality of each emergency off button. Are they working correctly?

For further troubleshooting, please contact Oshkosh Specialty Vehicles for assistance.





Appendix E: Lockout/Tagout Procedures

Specific Energy Control Procedures

Machine or Equipment for this Procedure:

Specialty Vehicle Trailer: **GE Signa Horizon MRI System**

Control of Hazardous Energy:

Type of Hazardous Energy	When is it Necessary to Lock Out
Electrical 480V AC	When servicing main electrical power line
Electrical 120V AC room circuits	When servicing or performing installation inside specific sections of the trailer
Electrical 12V DC	When servicing the following: Platform lift, Hydraulic System, Lighting
Electrical 12V DC From Battery	When servicing the following: Platform lift, Hydraulic System, Lighting

Affected Personnel to notify when the Oshkosh Specialty Vehicles Trailer is to be Locked Out:

Name/Department:	Location:
Production employees	In the vicinity of the trailer



Shut down specifications for the Oshkosh Specialty Vehicle Trailers:

Energy Type and Rating:	Type of Energy Isolating Device:	Location of Energy Isolating Device:	Lockout Device Used:
Main power feed Electrical 480V AC	Circuit Breaker or Plug	Normally located above the Facility Power Shore.	Lock and tag with or without lockout hasp
Light or outlet circuits Electrical 120V AC	Wall switch or circuit breaker	Distribution panel for circuit breaker, wall switch for room circuits.	Lock and tag with a Universal Wall Switch Lockout, Universal Circuit Breaker Lockout
Roll Door Electrical 120V AC	Circuit Breaker, Service Switch	CB in 120/208 V AC Panel, Switch in overhead panel above door	Lock and tag with a Universal Switch Lockout, Universal Circuit Breaker Lockout
Power to lift panels Electrical 12V DC	Remove Battery Cables	Driver's side underbody compartment, On battery.	Lock and tag with a Circuit Breaker Lockout attachment device
Electrical 12V DC From Battery	Remove Battery Cables	Driver's side underbody compartment, On battery.	Lock and tag with a Plug Lockout attachment device
Medical System GE MRI	Circuit Breaker	A-1 Panel in equipment area.	Lock and tag with or without lockout hasp
Air Conditioning System 480 V AC	40A Circuit Breaker	CB in 480V AC Distribution Panel and Chiller are a single unit.	Lock and tag with or without lockout hasp
Air Conditioning System Blowers 120V AC	15A Circuit Breaker	CB in 120/208V AC Distribution Panel.	Lock and tag with or without lockout hasp
Heating System	15A Circuit Breaker	CB in 480V AC Distribution Panel	Lock and tag with or without lockout hasp

Methods to dissipate energy:

N/A

Method of Verifying the Isolation of the Machine or Equipment:

Voltmeter

Appendix F: Phantom Storage

When not in use, the phantoms and positioning pads must be properly stored as shown in the following photographs.



Figure 66: Phantom Storage





Appendix G: Quarterly Maintenance Checklist



PREVENTIVE MAINTENANCE CHECKLIST

Company Performing Preventive Maintenance:

Service Technician:

Trailer ID # :	Date	Date	Date	Date	
HVAC	3M	6M	9M	12M	Comments
Inspect/change filters					
Inspect Thermostats					
Verify heat strip operation					
Inspect/clean evaporator coil					
Clean/inspect condenser coils					
Inspect electrical contactors					
Verify refrigerant pressures					
Inspect refrigeration piping abrasion					
Lubricate fan motors if applicable					
Inspect covers/fasteners					
Verify compressor amp draw					
Verify condensate pans/drains					
Verify Condenser motor operation					
Chiller	3M	6M	9M	12M	Comments
Inspect electrical contactors					
Verify refrigerant pressures					
Inspect refrigeration piping abrasion					
Inspect pump seal					
Lubricate motors					
Clean/replace aluminum filters					
Inspect covers/fasteners					
Verify operating/alarm controls					
Verify CW supply temp 45-75 F					
Inspect/replace glycol filter					
Clean/ inspect condensing coils					
Verify/adjust glycol level					
Verify Condenser motor operation					



Trailer	3M	6M	9M	12M	Comments
Test/inspect lift gate					
Inspect rails/ pins					
Inspect lift fittings/pivot points					
Clean / lubricate slide rails					
Verify lift switches and remote					
Load test van battery (lift)					
Verify hydraulic fluid level					
Verify van battery charger					
Verify roll door controls					
Inspect roll door mounting bolts					
Inspect roll door clutch/hardware					
Inspect roll door side track rails					
Inspect roll door key way					
Inspect awning					
Inspect bay door shocks/hardware					
Verify bay light operation					
Inspect clean and RF door gasket. Verify RF door operation					
Verify RF door lock and the handle operate correctly					
Check RF door for binding and loose hardware.					
Check door hinges/stops/latches for proper operation					
Inspect Slide outs for operation					
Inspect Slide out compressor					
Empty compressor drain and verify Y-strainer is cleaned out					
Check Fire system Last Inspection Date _____					
Inspect stair mounts					
Inspect interior flooring					
Verify bay heater operation					
Inspect cabinet latches and hinges					
Verify phone/communication lines					
Inspect landing gear					
Inspect locking pins					
Inspect air drive or air/hydraulic					
Inspect air tanks					
Verify hub fluid levels					
Inspect undercarriage/frame					
Inspect airbags/airlines/fittings					
Inspect shocks/bushings					
Inspect Tires / Rotate as needed					
Note hub meter mileage _____					



Generator	3M	6M	9M	12M	Comments
Clean fuel/water separator & replace filter					
Lamp test on control panel					
Inspect fuel lines & injectors					
Change oil/filters- 250 hrs					
Check crankcase breather					
Check hoses/belts					
Verify radiator coolant level					
Verify coolant freeze point & pH					
Verify block heater operation					
Inspect housing mounting bolts					
Inspect muffler/brackets					
Verify battery charging voltage					
Load test battery/clean terminals					
Verify voltage & hertz output					
Record hours run since last P.M. (_____) Recorded Generator Hours					

Electrical	3M	6M	9M	12M	Comments
Inspect breakers and panels					
Inspect lighting and bulbs					
Inspect power cord and plug					
Inspect 110volt outlets					

Humidifier	3M	6M	9M	12M	Comments
Inspect/replace steam tank					
Verify humid control set point					
Inspect/fill water reservoir					
Clean fill and drain valves					
Verify 12 volt pump					

Misc.	3M	6M	9M	12M	Comments
Attach and/or fill out Quarterly Service Record for all major components					

Comment :



Signature of Technician: _____

Date: _____



Appendix H: Cross Brace Installation

Introduction

This manual is intended to assist in the installation of the Cross Brace Assembly to the side wall H-frames.

Requirements

Cross Brace Assembly-Front	Qty-1
Cross Brace Assembly-Rear	Qty-1
Cross Brace Assembly-Rear-Short	Qty-1
Connecting bolt hardware	Qty-(2)-1/2-13"x 1-1/4" Lg. bolts.
Lock washer	Qty-(14)-1/2" ID x 1/2" Thk.
Mounting Hardware (to H-frame)	Qty-(12)-1/2-13"x 1.0" Lg. bolts.
Torque wrench	Qty-1
Shim Pack-Aluminum	Qty & thickness of shim as required.
Torque range 40-42ft/lbs (Not to exceed 42ft/lbs).	

Two people should be used to completely install and completely remove the Cross Brace Assemblies.



Installation Procedure

Cross Brace Assembly-Front:

1. Align & mount the Front Cross Brace Assembly to the H-frame, side wall.
2. Position the cross brace in place. Install mounting hardware-1/2-13" bolts to the mounting plate, **DO NOT** torque the bolts to the specified torque range.
3. Check to see if there is a gap. If a gap appears a shim is required. See [Figure 72:- Gap Shown](#)
4. If a shim is required, See [Figure 69:-Cross Brace-Shim \(Typical\)](#)
5. Measure the gap. Fabricate shim. The shim thickness will vary depending on the size of the gap. Install the shim on the mounting plate of the H-frame, left side wall. See [Figure 73:-Shim in place.](#)
6. If no gap is shown, torque the bolts to the specified torque range.

Cross Brace Assembly-Rear:

1. Assemble the Rear Cross Brace Assembly with the Short Brace Assembly. se two bolts, two lock washers. See [Figure 67:-Cross Brace Assembly-Rear-W/Short Assembly](#)
2. Align & mount the short end of the Brace Assembly to the H-frame, right side wall.
3. Repeat steps 3, 4, 5, and 6, of the Front Brace installation steps.

Removal Procedure

1. **Note: Under certain conditions, such as removing the magnet cold head, the Rear Short Cross Brace Assembly will have to be disassembled and removed.** See [Figure 67:-Cross Brace Assembly-Rear-W/Short Assembly](#)
2. The removal procedure will be the reverse order of the installation order.
3. Un-torque the bolts and remove the Brace assembly. (two people required)
4. If the short is to be removed, this can be done by one person.

Cross Brace Assembly Details:

- Cross Brace Assembly-Front.
- Cross Brace Assembly-Rear.
- Cross Brace Assembly-Rear, Short
- Shim pack
- Assemble Cross Brace Assembly with the Short Brace Assembly.
- Use two 1/2-13 bolts and two 1/2" ID. Lock washers.
- Mount this end to the right side wall of the H-frame.



Cross Brace Assembly –Short

When required disassemble and remove this end (one person can do this)

Figure 67:-Cross Brace Assembly-Rear-W/Short Assembly



Figure 68:-Cross Brace Assembly-Front



Thickness of shim will depend on the size of gap.

Figure 69:-Cross Brace-Shim (Typical)

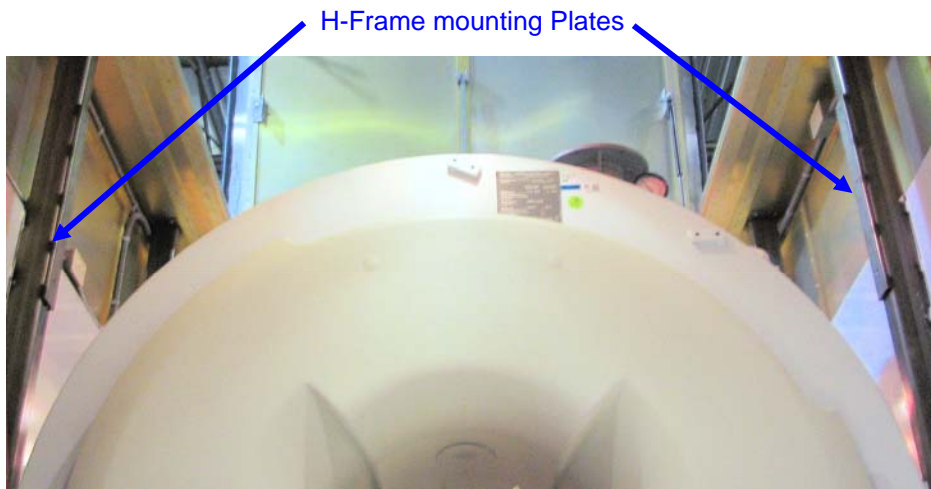
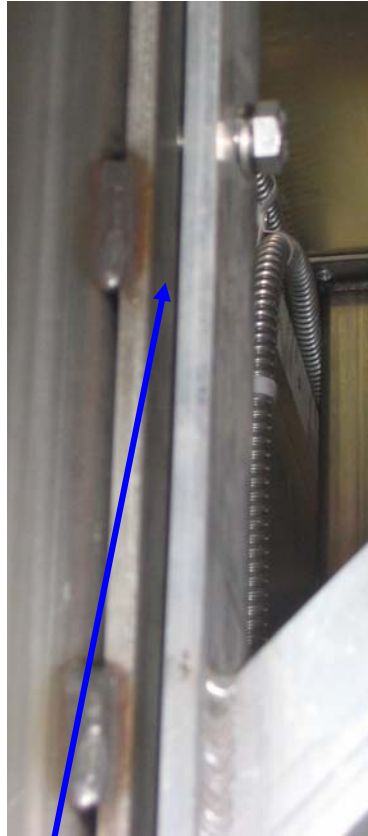


Figure 70:-Cross Brace-Mounting Location



Secure Cross Brace to H-Frame right side wall. Do not torque bolts until Brace Assembly is completely installed and mounted

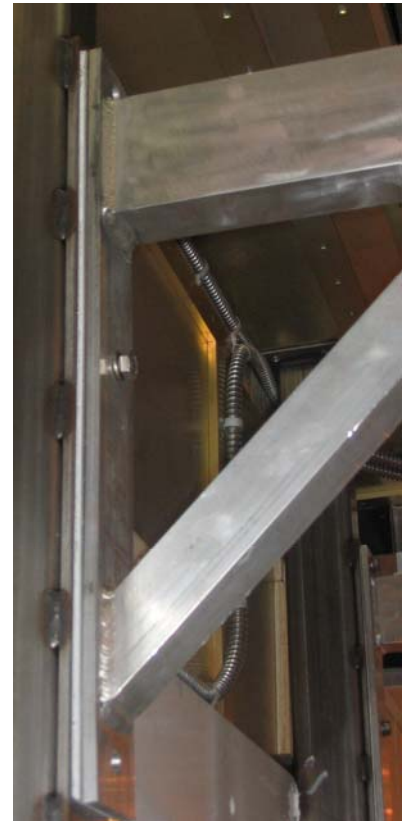
[Figure 71:-Cross Brace Mounted to H frame RS wall](#)



Gap

If a gap is present, measure gap, fabricate shim to fit.

[Figure 72:-Gap Shown](#)



After Brace is installed torque all hardware to the specified torque range.

[Figure 73:-Shim in place](#)



Figure 74:-Cross Brace Assembly Mounted & Secured