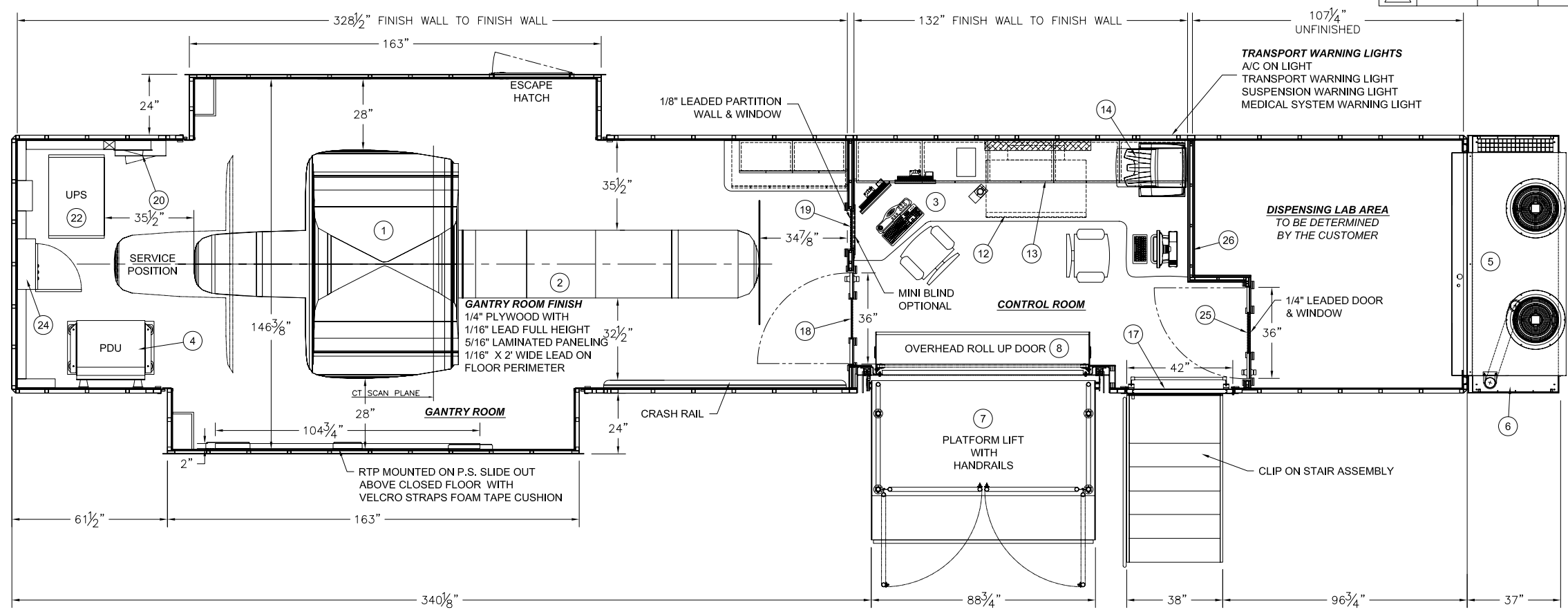
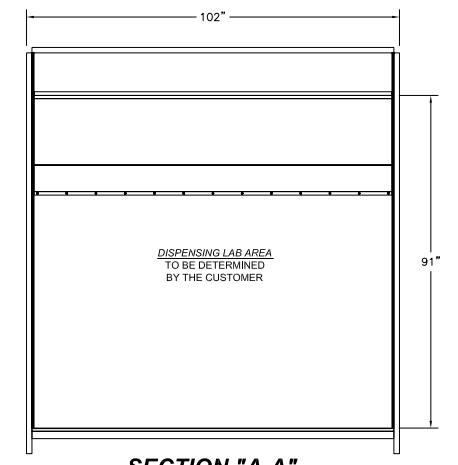


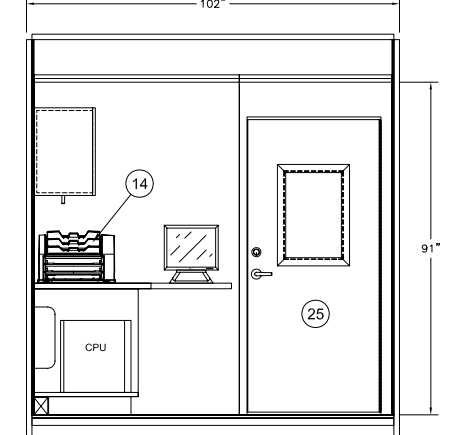
REV.	REV. DATE	CHK. BY	CHK. DATE	ENG.	REVISIONS	DESCRIPTION
00						



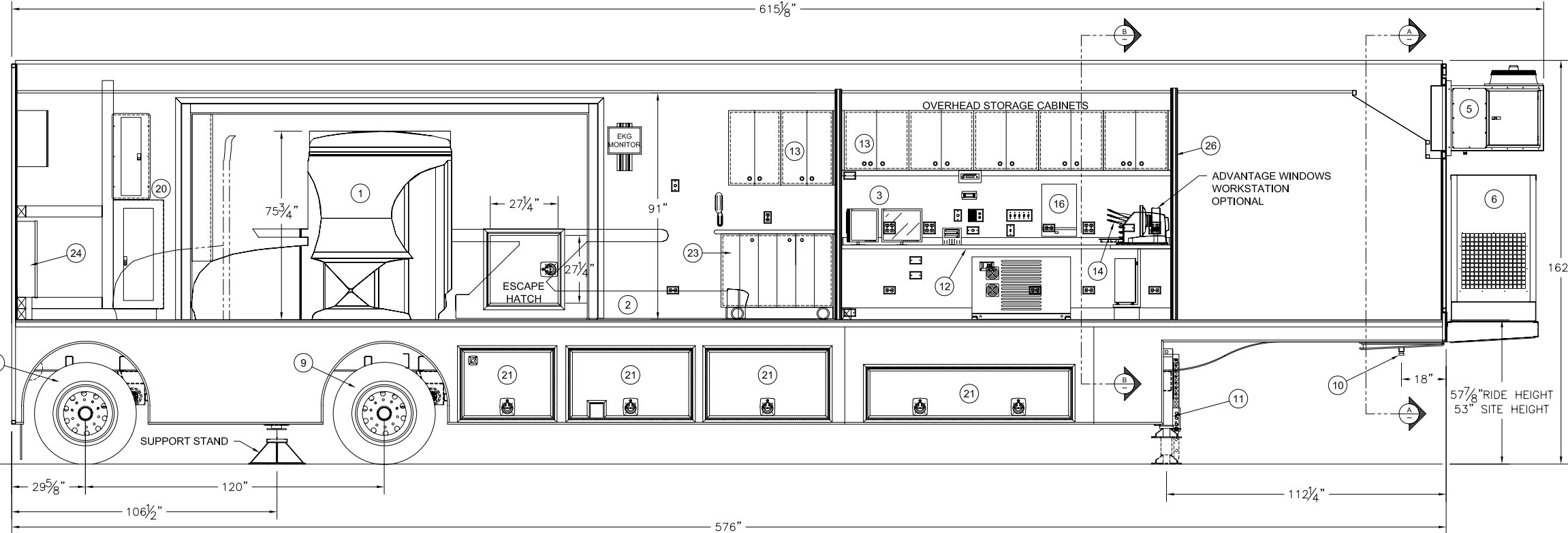
PLAN VIEW



SECTION 'A-A'



SECTION 'B-B'



ELEVATION VIEW

ITEM	QTY	PART NUMBER	DESCRIPTION
26	1		LEADED PARTITION WALL (1/4" THICK LEAD)
25	1		36" x 80" LEADED (1/4") DOOR w/ 16" x 24" x 14.5MM LEADED WINDOW (x2)
24	1		GE A1 PANEL
23	1		MOVABLE ROLL AROUND STORAGE CABINET w/BI-FOLD DOORS
22	1		UPS - POWERWARE 9330 - 20 MODEL 15 (SUPPLIED BY GE)
21	9		LOWER COMPARTMENT DOORS (4-PS / 5-DS)
20	2		ELECTRICAL SERVICE PANELS (1-480V / 1-208V)
19	1		16" x 24" x 14.5MM LEADED WINDOW
18	1		36" x 80" LEADED (1/8") DOOR w/ 16" x 24" x 14.5MM LEAD WINDOW
17	1		42" x 80" ENTRY DOOR
16	1		VIEWER
15			
14	1		CODONICS PRINTER
13	7		OVERHEAD STORAGE CABINETS
12	2		WORK COUNTER
11	2		EQUILIZER LEVELING LEGS, 25,000 LB. CAP.
10	1		AIR RIDE UPPER COUPLER (KING PIN)
9	1		AIR RIDE SUSPENSION, 44,000 LB. CAP.
8	1		ROLL-UP DOOR 7'-6"
7	1		PLATFORM LIFT - 89" WIDE ALUMINUM PLATFORM
6	1		100KW DIESEL GENERATOR
5	1		48,000 BTU AIR CONDITIONER
4	1		POWER DISTRIBUTION UNIT
3	1		GEMS OPERATOR WORK STATION
2	1		GEMS PATIENT TABLE
1	1		GEMS DST H - POWER GANTRY

BILL OF MATERIALS

Unit Type
 Unit Type
 Special Purpose Commercial Modular
 CA HSC 1801.25

Construction Standard
 CA Health and Safety Code Section 18028
 CCR, Title 25, Article 1, 3.5
 ANSI A117.1, ADA

THIS DRAWING IS PROVIDED ON A CONFIDENTIAL BASIS SUBJECT TO RETURN ON DEMAND OF OSHKOSH SPECIALTY VEHICLES ("OSHKOSH"), WHICH RETAINS ANY AND ALL RIGHTS ASSOCIATED WITH IT AND THE ARTICLE OR ARTICLES IT REPRESENTS. DISCLOSURE, REPRODUCTION OR ALTERATION OF ANY PART OF THIS DRAWING OR MANUFACTURE, USE OR SALE OF THE ARTICLE OR ARTICLES REPRESENTED, IS PROHIBITED WITHOUT THE PRIOR WRITTEN AUTHORIZATION OF OSHKOSH. © OSHKOSH SPECIALTY VEHICLES (unpublished).

SHEET NUMBER: SHEET 1 OF 1	REFERENCE DRAWING: 12193-A01-05	TITLE: GENERAL LAYOUT GE MEDICAL SYSTEMS DISCOVERY ST PET/CT 8'-6" x 13'-6" x 48'-0" TRAILER	DATE: 04/30/08	SCALE: 1/2"=1'-0"
JOB#			16745 S. LATHROP AVENUE HARVEY, IL, 60426 PHONE: (708) 596-5066 FAX: (708) 596-2480	
			CHECKED BY: DRAWING NUMBER: 10315-A01	